

Concealed wall-mounted single-lever mixer mixer on right -

35 816 970 90 Product version from 3/16/2015



- 2x female thread 1/2" connections
- 2x 1/2" x 1000mm high pressure hose
- 1x female thread 1/2" outlet for wall spout
- cartridge
- gauge 100 mm
- lead-free

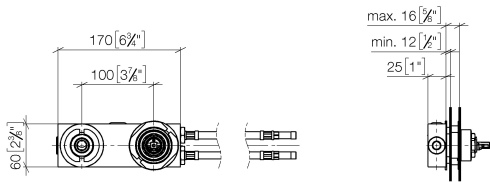
Recommended combination for this fitting:Rear walls with- wall thickness: 12-16 mm- spout hole diameter: 40 mm- mixer hole diameter: 58 mm- clear width behind wall: 25 mm

NOTE:Not suitable for concealed installation.Connection by means of angle valves, mounted with screws to back wall.

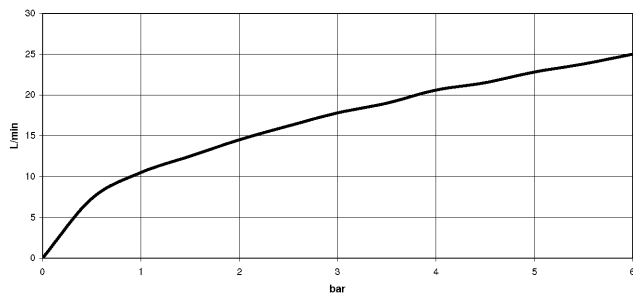
Concealed wall-mounted single-lever mixer mixer on right -

35 816 970 90 Product version from 3/16/2015

mm [inches]

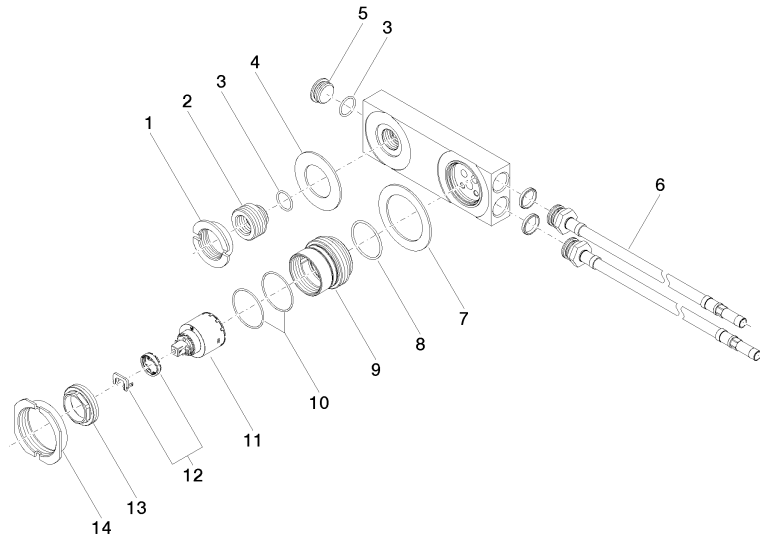


Flow rate chart



Concealed wall-mounted single-lever mixer mixer on right -

35 816 970 90 Product version from 3/16/2015



Spare parts list

| No. | Item Number | Name | Quantity used | Delivery time |
|-----|--------------------|-------------|---------------|---------------|
| 1 | 09 23 10 019-07 | nut | 1 | 30 |
| 2 | 09 24 03 064 10 90 | nipple | 1 | 2 |
| 3 | 09 14 10 053 90 | seal | 2 | 2 |
| 4 | 09 14 05 022 90 | seal | 1 | 2 |
| 5 | 09 31 20 032 10 90 | plug | 1 | 60 |
| 6 | 09 30 04 059 90 | hose | 2 | 2 |
| 7 | 09 14 05 019 90 | seal | 1 | 60 |
| 8 | 09 14 10 034 90 | seal | 1 | 2 |
| 9 | 09 17 01 039 10 90 | base | 1 | 2 |
| 10 | 09 14 10 190 90 | seal | 2 | 2 |
| 11 | 90 15 05 065 00 90 | cartridge | 1 | 2 |
| 12 | 90 28 10 148 00 90 | accessories | 1 | 2 |
| 13 | 09 24 04 105 90 | nut | 1 | 2 |
| 14 | 09 23 30 047 90 | nut | 1 | 2 |