

Concealed floor mounting -

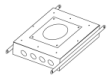
SERIES-VARIOUS

35 945 970 90



- red brass, lead-free
- 2x female thread 1/2" connections
- dust cover
- anti-water packing
- WRAS

Recommended miscellaneous

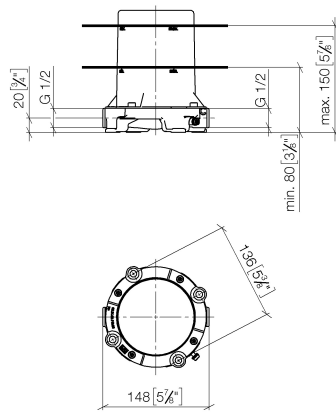


Drybox for floor mounting -
 • Overflow is part of the scope of delivery.

38 945 970 90

35 945 970 90

mm [inches]



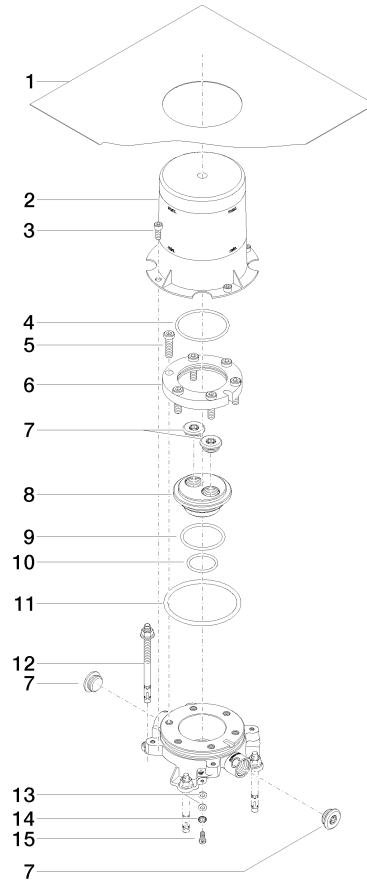
Codes & Standards

Scottish Water Byelaws	UK Water Supply Regulations
---------------------------	--------------------------------

Certificates and sustainability

WRAS_2005

35 945 970 90



Spare parts list

No.	Item Number	Name	Quantity used	Delivery time
	5 09 30 30 047 90	screw	6.00	2
	6 09 30 11 121 90	connection	1.00	2
	11 09 14 10 072 90	seal	1.00	2
	7 04 31 20 006 00 90	plug	4.00	2
	13 09 30 11 048 90	disc	2.00	2
	3 09 30 30 053 90	screw	4.00	2
	4 09 14 10 078 90	seal	1.00	2
	9 09 14 10 084 90	seal	1.00	2
	2 09 21 02 116 90	cap	1.00	2
	15 09 30 30 058 90	screw	1.00	2
	1 04 14 03 077 00 90	gasket kit	1.00	2
	10 09 14 10 018 90	seal	1.00	2
	12 04 30 35 008 00 90	fixing set	4.00	2
	8 09 31 20 033 90	plug	1.00	2
	14 90 30 11 032 00 90	disc	1.00	2