



Concealed single-lever mixer with cover plate with integrated shower connection - Brushed Champagne (22kt Gold)

36 046 660    Product version from 4/1/2024



- cover plate Ø 80 mm
- Intrinsic protection against back flow.**
- Intrinsic protection against back flow.

	Brushed Champagne (22kt Gold)	36 046 660-46
	Chrome	36 046 660-00
	Brushed Platinum	36 046 660-06
	Platinum	36 046 660-08
	Dark Chrome	36 046 660-19
	Brushed Durabronze (23kt Gold)	36 046 660-28
	Matte Black	36 046 660-33
	Brushed Bronze	36 046 660-42
	Champagne (22kt Gold)	36 046 660-47
	Brushed Chrome	36 046 660-93
	Brushed Dark Platinum	36 046 660-99

Required miscellaneous

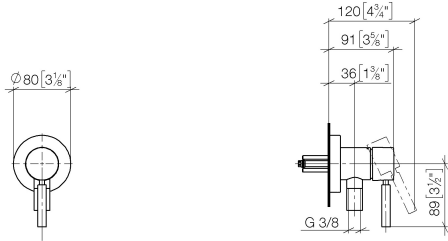
- Concealed wall mounting -**                      35 050 970 90
- min. recess depth mm
  - max. recess depth mm



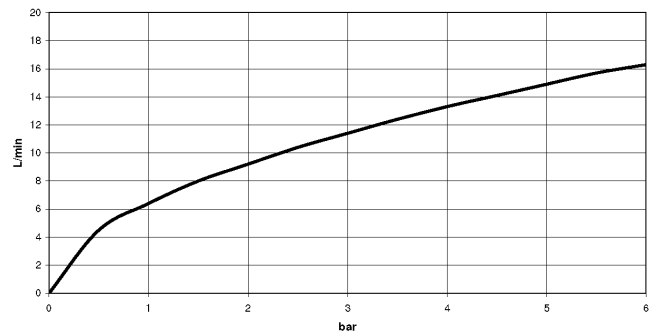


Concealed single-lever mixer with cover plate with integrated shower connection - Brushed Champagne (22kt Gold)

36 046 660 Product version from 4/1/2024  
mm [inches]



Flow rate chart



Codes & Standards

DIN 4109 ISO 3822 Ü-Zeichen



## Concealed single-lever mixer with cover plate with integrated shower connection - Brushed Champagne (22kt Gold)

---

36 046 660 Product version from 4/1/2024

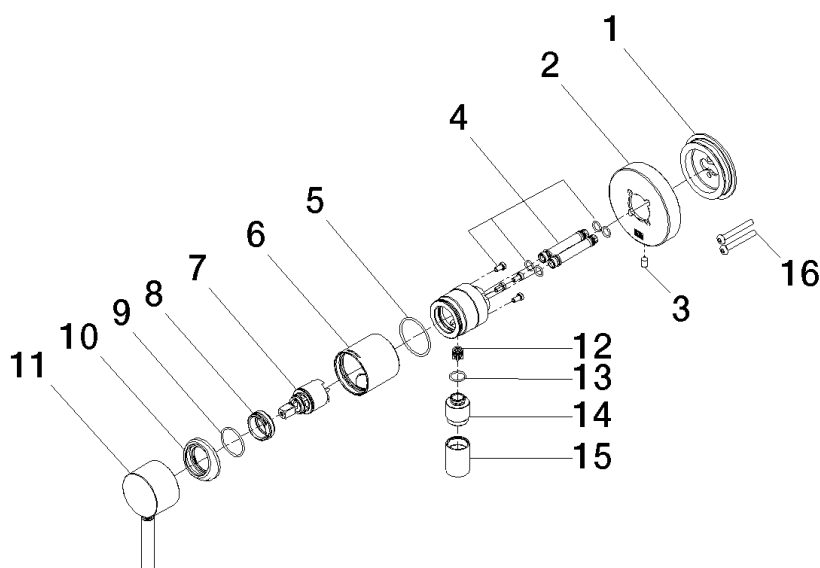
### Certificates

---

LGA\_38

## Concealed single-lever mixer with cover plate with integrated shower connection - Brushed Champagne (22kt Gold)

36 046 660 Product version from 4/1/2024



### Spare parts list

No.	Item Number	Name	Quantity used	Delivery time
1	90 30 11 232 00 90	disc	1	2
2	90 27 66 023 00-46	rosette	1	-
Spare part can no longer be ordered, please order the replacement item				
3	09 31 11 144 90	pin	1	2
4	90 24 01 046 00 90	connection	2	2
5	09 14 10 111 90	seal	1	2
6	90 18 40 320 00-46	sleeve	1	-
Spare part can no longer be ordered, please order the replacement item				
7	90 15 05 044 00 90	cartridge	1	2
8	09 24 04 266 90	nut	1	2
9	09 14 10 120 90	seal	1	2
10	09 28 30 041-46	cover	1	30
11	90 20 66 006 00-46	handle	1	30
12	09 23 01 131 90	back-flow preventer	1	2
13	90 14 10 021 00 90	seal	1	2
14	09 24 03 281-46	nipple	1	30
15	90 21 02 069 00-46	cover	1	30
16	90 30 30 229 00 90	screw	2	2