

Concealed thermostat with one function volume control - Champagne (22kt Gold)

SERIES SPECIFIC

36 425 970 Product version from 6/30/2022



- cover plate Ø 150 mm
- temperature control handle with safety limit stop at 38°C
- hot water temperature limiter, can be preset
- WRAS

| | | |
|--|--------------------------------|---------------|
| | Champagne (22kt Gold) | 36 425 970-47 |
| | Chrome | 36 425 970-00 |
| | Brushed Platinum | 36 425 970-06 |
| | Platinum | 36 425 970-08 |
| | Dark Chrome | 36 425 970-19 |
| | Light Gold | 36 425 970-26 |
| | Brushed Light Gold | 36 425 970-27 |
| | Brushed Durabronze (23kt Gold) | 36 425 970-28 |
| | Matte Black | 36 425 970-33 |
| | Brushed Dark Brass | 36 425 970-39 |
| | Brushed Bronze | 36 425 970-42 |
| | Brushed Champagne (22kt Gold) | 36 425 970-46 |
| | Brushed Chrome | 36 425 970-93 |
| | Brushed Dark Platinum | 36 425 970-99 |

Required miscellaneous



- Concealed thermostat -** 35 425 970 90
- max. recess depth 136 mm
 - min. recess depth 80 mm

Recommended miscellaneous



- xGRID Attachment set for integrating in the dry wall construction -** 12 340 970 90

Required miscellaneous



- Concealed thermostat with built-in isolators -** 35 426 970 90
- max. recess depth 136 mm
 - min. recess depth 80 mm

Required miscellaneous



- xGRID Installation track 555 mm -** 12 360 970 90

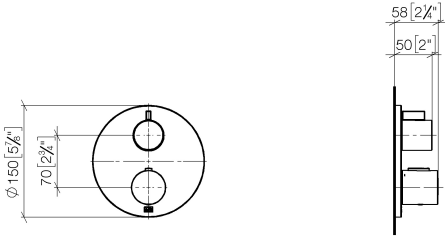
Concealed thermostat with one function volume control - Champagne (22kt Gold)

SERIES SPECIFIC

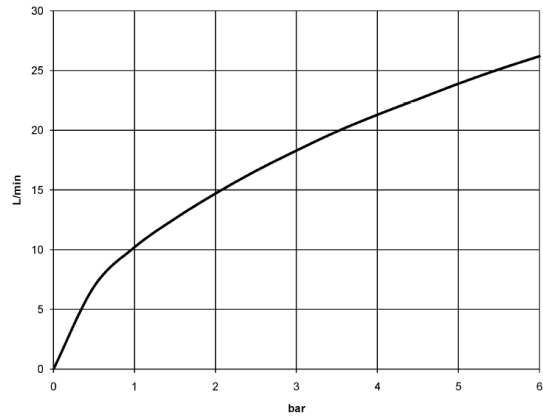
36 425 970

Product version from 6/30/2022

mm [inches]



Flow rate chart



Codes & Standards

| | | | |
|-----------------------------|-----------|------------|------------------------|
| DIN 4109 | EN 1111 | ISO 3822 | Scottish Water Byelaws |
| UK Water Supply Regulations | Ü-Zeichen | VA-Zeichen | |



Concealed thermostat with one function volume control - Champagne (22kt Gold)

SERIES SPECIFIC

36 425 970 Product version from 6/30/2022

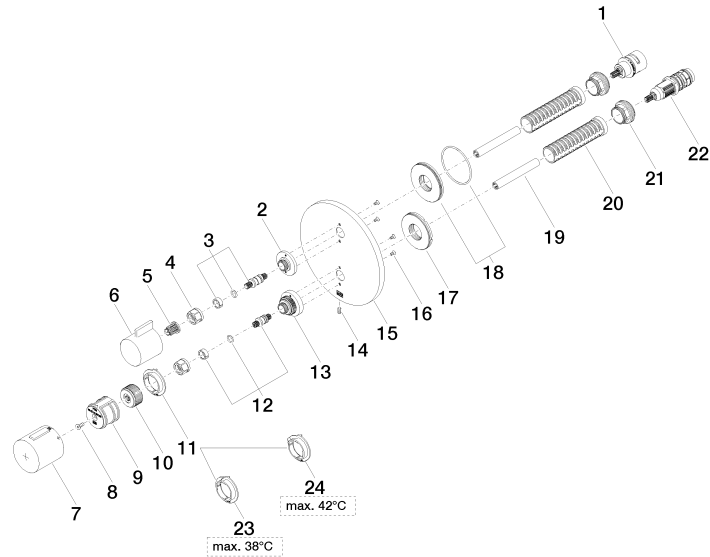
Certificates and sustainability

| | | | | |
|--------|--------|-----------------|--------|-------------|
| LGA_19 | ETA_20 | DVGW_DW-6512DN0 | LGA_19 | WRAS_250402 |
|--------|--------|-----------------|--------|-------------|

Concealed thermostat with one function volume control - Champagne (22kt Gold)

SERIES SPECIFIC

36 425 970 Product version from 6/30/2022





Concealed thermostat with one function volume control - Champagne (22kt Gold)

SERIES SPECIFIC

36 425 970 Product version from 6/30/2022

Spare parts list

| No. | Item Number | Name | Quantity used | Delivery time |
|-----|--------------------|------------|---------------|---------------|
| 24 | 09 28 10 189 90 | regulator | 1.00 | 2 |
| 5 | 90 12 12 002 00 90 | fixing cap | 1.00 | 2 |
| 2 | 09 12 12 053-47 | base | 1.00 | 30 |
| 18 | 90 30 01 190 00 90 | disc | 1.00 | 2 |
| 1 | 90 90 03 166 00 90 | top | 1.00 | 2 |
| 6 | 09 20 67 006-47 | handle | 1.00 | 30 |
| 21 | 09 24 04 257 90 | nut | 2.00 | 2 |
| 17 | 09 30 01 296 90 | disc | 1.00 | 2 |
| 7 | 90 17 33 017 00-47 | handle | 1.00 | 30 |
| 23 | 09 28 10 188 90 | regulator | 1.00 | 2 |
| 11 | 09 28 10 187 90 | regulator | 1.00 | 2 |
| 13 | 09 12 12 051-47 | base | 1.00 | 30 |
| 10 | 09 12 12 054 90 | base | 1.00 | 2 |
| 14 | 09 31 11 134 90 | pin | 1.00 | 2 |
| 22 | 90 15 02 013 00 90 | cartridge | 1.00 | 2 |
| 16 | 09 30 30 157 90 | screw | 4.00 | 2 |
| 15 | 09 11 02 242-47 | plate | 1.00 | 60 |
| 3 | 04 29 06 111 01-00 | spindle | 1.00 | 10 |
| 4 | 90 23 30 023 00 90 | nut | 2.00 | 2 |
| 19 | 90 23 01 124 00 90 | sleeve | 2.00 | 2 |
| 20 | 90 18 40 077 01 90 | spindle | 2.00 | 2 |
| 8 | 90 30 30 124 00 90 | screw | 1.00 | 2 |
| 9 | 90 12 12 052 00 90 | base | 1.00 | 2 |
| 12 | 04 29 06 024 01-00 | spindle | 1.00 | 10 |