

Concealed thermostat with two function volume control - Brushed Dark Platinum

SERIES SPECIFIC

36 426 670 Product version up to 5/15/2020



- rotary diverter with volume control and shut-off function
- cover plate 150 x 90 mm
- temperature control handle with safety limit stop at 38°C
- hot water temperature limiter, can be preset
- WRAS

| | | |
|---|--------------------------------|---------------|
|  | Brushed Dark Platinum | 36 426 670-99 |
|  | Chrome | 36 426 670-00 |
|  | Brushed Platinum | 36 426 670-06 |
|  | Platinum | 36 426 670-08 |
|  | Dark Chrome | 36 426 670-19 |
|  | Brushed Light Gold | 36 426 670-27 |
|  | Brushed Durabronze (23kt Gold) | 36 426 670-28 |
|  | Matte Black | 36 426 670-33 |
|  | Brushed Champagne (22kt Gold) | 36 426 670-46 |
|  | Champagne (22kt Gold) | 36 426 670-47 |
|  | Brushed Chrome | 36 426 670-93 |

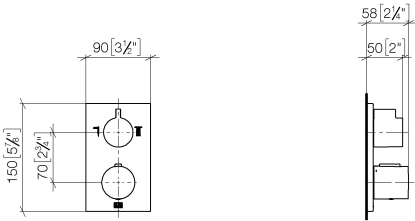
Concealed thermostat with two function volume control - Brushed Dark Platinum

SERIES SPECIFIC

36 426 670

Product version up to 5/15/2020

mm [inches]



Flow rate chart



Codes & Standards

| | | | |
|-----------------------------|-----------|------------|------------------------|
| DIN 4109 | EN 1111 | ISO 3822 | Scottish Water Byelaws |
| UK Water Supply Regulations | Ü-Zeichen | VA-Zeichen | XP P 41-280 |



Concealed thermostat with two function volume control - Brushed Dark Platinum

SERIES SPECIFIC

36 426 670 Product version up to 5/15/2020

Certificates and sustainability

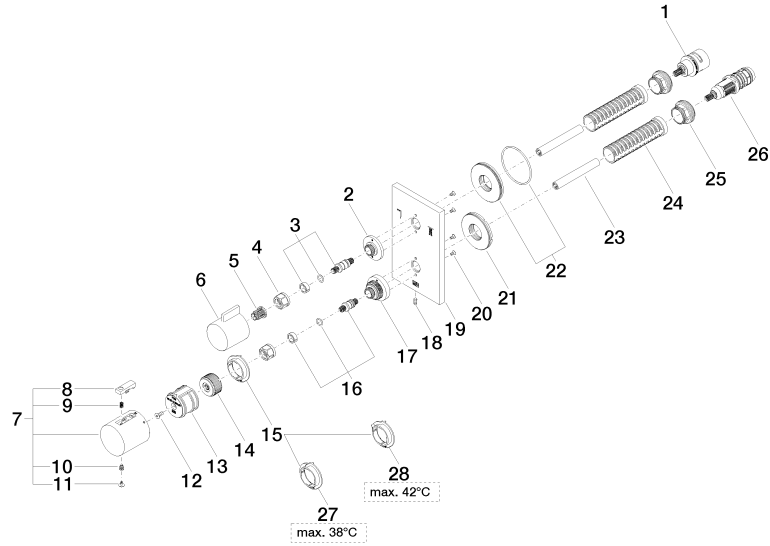
| | | | | |
|---------------|--------|--------|-----------------|--------|
| ACS_20 ACC LY | LGA_19 | ETA_20 | DVGW_DW-6512DN0 | LGA_19 |
| WRAS_250402 | | | | |

Concealed thermostat with two function volume control - Brushed Dark Platinum

SERIES SPECIFIC

36 426 670 Product version up to 5/15/2020

Parts for other
finishes can be found
here: [Chrome](#)





Concealed thermostat with two function volume control - Brushed Dark Platinum

SERIES SPECIFIC

36 426 670 Product version up to 5/15/2020

Spare parts list

| No. | Item Number | Name | Quantity used | Delivery time |
|-----|--------------------|------------|---------------|---------------|
| 28 | 09 28 10 189 90 | regulator | 1.00 | 2 |
| 6 | 09 20 67 006-99 | handle | 1.00 | 20 |
| 25 | 09 24 04 257 90 | nut | 2.00 | 2 |
| 17 | 09 12 12 051-99 | base | 1.00 | 20 |
| 21 | 09 30 01 296 90 | disc | 1.00 | 2 |
| 22 | 90 30 01 190 00 90 | disc | 1.00 | 2 |
| 9 | 90 16 02 027 00 90 | spring | 1.00 | 2 |
| 5 | 90 12 12 002 00 90 | fixing cap | 1.00 | 2 |
| 26 | 90 15 02 013 00 90 | cartridge | 1.00 | 2 |
| 19 | 09 11 02 233-99 | plate | 1.00 | 20 |
| 14 | 09 12 12 054 90 | base | 1.00 | 2 |
| 15 | 09 28 10 187 90 | regulator | 1.00 | 2 |
| 27 | 09 28 10 188 90 | regulator | 1.00 | 2 |
| 2 | 09 12 12 053-99 | base | 1.00 | 20 |
| 1 | 90 90 03 163 00 90 | diverter | 1.00 | 2 |
| 20 | 09 30 30 157 90 | screw | 4.00 | 2 |
| 7 | 90 17 33 004 00-99 | handle | 1.00 | 20 |
| 18 | 09 31 11 134 90 | pin | 1.00 | 2 |
| 12 | 90 30 30 124 00 90 | screw | 1.00 | 2 |
| 23 | 90 23 01 124 00 90 | sleeve | 2.00 | 2 |
| 13 | 90 12 12 052 00 90 | base | 1.00 | 2 |
| 3 | 04 29 06 111 01-00 | spindle | 1.00 | 10 |
| 24 | 90 18 40 077 01 90 | spindle | 2.00 | 2 |
| 16 | 04 29 06 024 01-00 | spindle | 1.00 | 10 |
| 11 | 90 31 20 049 00-13 | plug | 1.00 | 30 |
| 10 | 90 30 30 136 00 90 | screw | 1.00 | 2 |
| 4 | 90 23 30 023 00 90 | nut | 2.00 | 2 |
| 8 | 90 21 33 011 00-13 | handle | 1.00 | 2 |