

Concealed thermostat with two function volume control - Brushed Dark Platinum

META

36 426 970



- rotary diverter with volume control and shut-off function
- cover plate Ø 150 mm
- temperature control handle with safety limit stop at 38°C
- hot water temperature limiter, can be preset
- WRAS 1906098

	Brushed Dark Platinum	36 426 970-99
	Chrome	36 426 970-00
	Brushed Platinum	36 426 970-06
	Platinum	36 426 970-08
	Dark Chrome	36 426 970-19
	Brushed Durabronze (23kt Gold)	36 426 970-28
	Matte Black	36 426 970-33
	Brushed Champagne (22kt Gold)	36 426 970-46
	Champagne (22kt Gold)	36 426 970-47
	Brushed Chrome	36 426 970-93

Required miscellaneous



Concealed thermostat with built-in isolators - 35 426 970 90

- max. recess depth 136 mm
- min. recess depth 80 mm

Recommended miscellaneous



xGRID Attachment set for integrating in the dry wall construction - 12 340 970 90

Required miscellaneous



Concealed thermostat - 35 425 970 90

- max. recess depth 136 mm
- min. recess depth 80 mm

Required miscellaneous

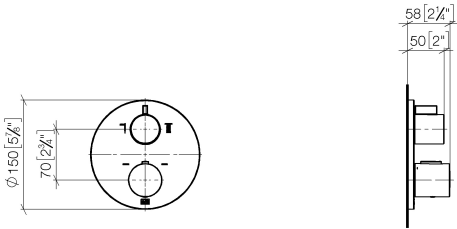


xGRID Installation track 555 mm - 12 360 970 90

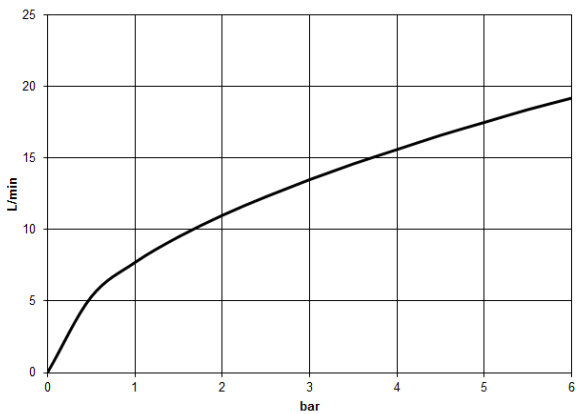
**Concealed thermostat with two function volume control - Brushed Dark
Platinum**

META

36 426 970
mm [inches]



Flow rate chart



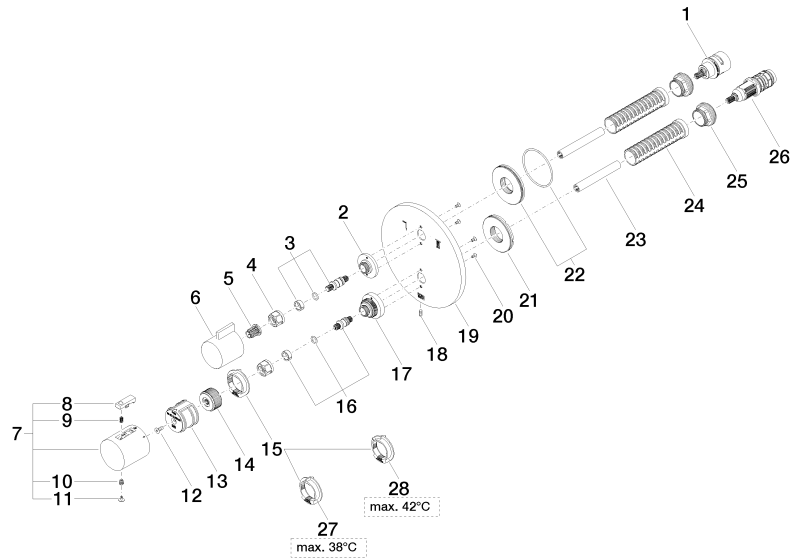
Certificates

ACS_20 ACC LY 740. LGA_19385. ETA_20551. DVGW_DW-6512DN0119. LGA_19384.
WRAS_1906098.

Concealed thermostat with two function volume control - Brushed Dark Platinum

META

36 426 970





Concealed thermostat with two function volume control - Brushed Dark Platinum

META

36 426 970

Spare parts list

No.	Item Number	Name	Quantity used	Delivery time
1	90 90 03 163 00 90	diverter	1	2
2	09 12 12 053-99	base	1	30
3	04 29 06 111 01-00	spindle	1	10
4	90 23 30 023 00 90	nut	2	2
5	90 12 12 002 00 90	fixing cap	1	2
6	09 20 67 006-99	handle	1	30
7	90 17 33 004 00-99	handle	1	30
8	90 21 33 011 00-13	handle	1	30
9	90 16 02 027 00 90	spring	1	2
10	90 30 30 136 00 90	screw	1	2
11	90 31 20 049 00-13	plug	1	30
12	90 30 30 124 00 90	screw	1	2
13	90 12 12 052 00 90	base	1	2
14	09 12 12 054 90	base	1	2
15	09 28 10 143 90	regulator	1	2
16	04 29 06 024 01-00	spindle	1	10
17	09 12 12 051-99	base	1	30
18	09 31 11 134 90	pin	1	2
19	09 11 02 243-99	plate	1	30
20	09 30 30 157 90	screw	4	2
21	09 30 01 296 90	disc	1	2
22	90 30 01 190 00 90	disc	1	2
23	90 23 01 124 00 90	sleeve	2	2
24	90 18 40 077 01 90	spindle	2	2
25	09 24 04 257 90	nut	2	2
26	90 15 02 012 00 90	cartridge	1	60
27	09 28 10 150 90	regulator	1	60
28	09 28 10 151 90	regulator	1	60