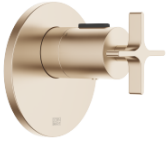


## VAIA xTOOL Concealed thermostat without volume control 1/2" - Brushed Champagne (22kt Gold)

VAIA

36 501 809 Product version from 4/1/2025



- cover plate Ø 123 mm
- temperature control handle with safety limit stop at 38°C
- thermostat cartridge
- WRAS

	Brushed Champagne (22kt Gold)	36 501 809-46
	Chrome	36 501 809-00
	Brushed Platinum	36 501 809-06
	Platinum	36 501 809-08
	Dark Chrome	36 501 809-19
	Brushed Durabronze (23kt Gold)	36 501 809-28
	Brushed Dark Brass	36 501 809-39
	Brushed Bronze	36 501 809-42
	Champagne (22kt Gold)	36 501 809-47
	Brushed Dark Platinum	36 501 809-99

### Required miscellaneous



**xTOOL Concealed thermostat module without volume control -** 35 503 970 90  
 • max. recess depth 110 mm  
 • min. recess depth 85 mm

### Recommended miscellaneous



**xGRID Attachment set for integrating in the dry wall construction -** 12 340 970 90

### Required miscellaneous

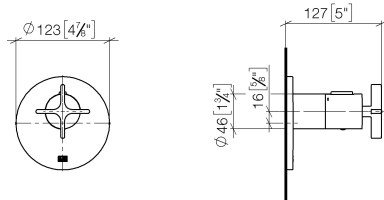


**xGRID Installation track 555 mm -** 12 360 970 90

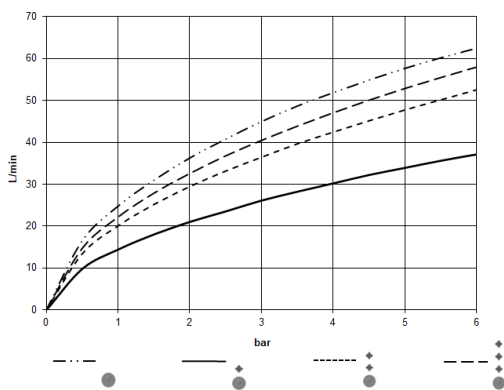
# VAIA xTOOL Concealed thermostat without volume control 1/2" - Brushed Champagne (22kt Gold)

VAIA

36 501 809 Product version from 4/1/2025  
mm [inches]



## Flow rate chart



## Codes & Standards

DIN 4109

ISO 3822

Scottish Water  
Byelaws

UK Water Supply  
Regulations

## Ü-Zeichen



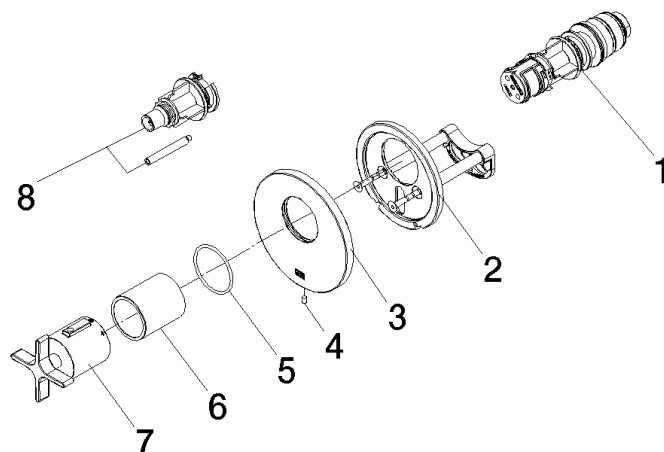
VAIA xTOOL Concealed thermostat without volume control 1/2" - Brushed  
Champagne (22kt Gold)

VAIA

36 501 809    Product version from 4/1/2025

Certificates and sustainability

WRAS_2011	LGA_29	LGA_29	LGA_29
-----------	--------	--------	--------



## Spare parts list

No.	Item Number	Name	Quantity used	Delivery time
5	90 14 10 049 00 90	seal	1.00	2
8	12 178 970 90	Extension 46 mm -	1.00	2
6	90 21 02 112 00-46	sleeve	1.00	30
3	09 11 02 537-46	cover	1.00	30
1	90 15 02 065 00 90	cartridge	1.00	2
7	90 17 33 029 00-46	handle	1.00	30
2	90 11 01 196 00 90	base	1.00	2
4	09 31 11 048 90	pin	1.00	2