

xTOOL Concealed thermostat without volume control 1/2" - Durabrand (23kt Gold)

SERIES SPECIFIC

36 501 979 Product version up to 2/2/2021



- cover plate Ø 124 mm
- temperature control handle with safety limit stop at 38°C
- thermostat cartridge
- WRAS

	Durabrand (23kt Gold)	36 501 979-09
	Chrome	36 501 979-00
	Brushed Platinum	36 501 979-06
	Platinum	36 501 979-08
	Dark Chrome	36 501 979-19
	Light Gold	36 501 979-26
	Brushed Light Gold	36 501 979-27
	Brushed Durabrand (23kt Gold)	36 501 979-28
	Matte Black	36 501 979-33
	Brushed Dark Brass	36 501 979-39
	Brushed Bronze	36 501 979-42
	Brushed Champagne (22kt Gold)	36 501 979-46
	Champagne (22kt Gold)	36 501 979-47
	Brushed Chrome	36 501 979-93
	Brushed Dark Platinum	36 501 979-99

Required miscellaneous



xTOOL Concealed thermostat module without volume control - 35 503 970 90
 • max. recess depth 110 mm
 • min. recess depth 85 mm

Recommended miscellaneous



xGRID Attachment set for integrating in the dry wall construction - 12 340 970 90

Required miscellaneous

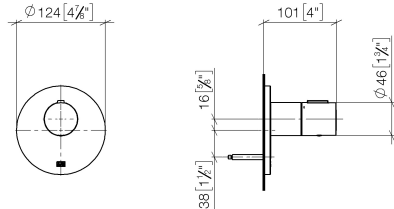


xGRID Installation track 555 mm - 12 360 970 90

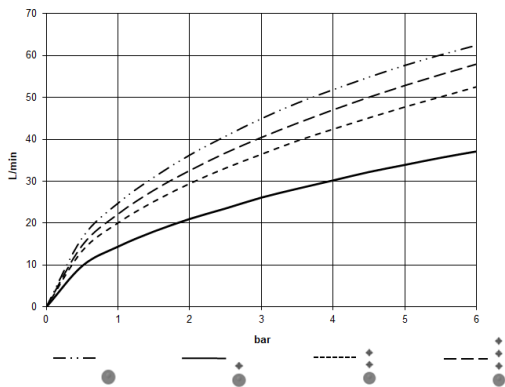
xTOOL Concealed thermostat without volume control 1/2" - Durabross (23kt Gold)

SERIES SPECIFIC

36 501 979 Product version up to 2/2/2021
mm [inches]



Flow rate chart



Codes & Standards

DIN 4109

EN 1111

ISO 3822

Scottish Water
Byelaws

UK Water Supply
Regulations

Ü-Zeichen



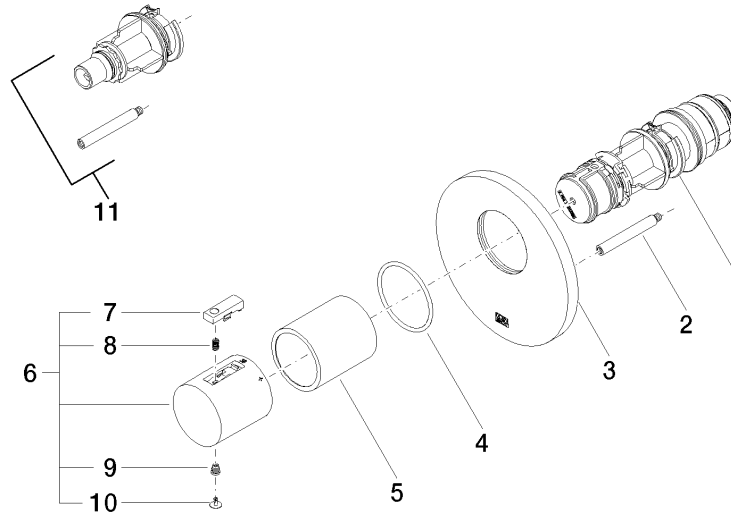
xTOOL Concealed thermostat without volume control 1/2" - Durabrass (23kt Gold)

SERIES SPECIFIC

36 501 979 Product version up to 2/2/2021

Certificates and sustainability

WRAS_2011	DVGW_DW-6512DN0	LGA_29	LGA_29
-----------	-----------------	--------	--------



Spare parts list

No.	Item Number	Name	Quantity used	Delivery time
3	09 11 02 162-09	cover	1.00	60
11	12 178 970 90	Extension 46 mm -	1.00	2
6	90 17 33 004 00-09	handle	1.00	40
8	90 16 02 027 00 90	spring	1.00	2
9	90 30 30 136 00 90	screw	1.00	2
4	90 14 10 049 00 90	seal	1.00	2
10	90 31 20 049 00-13	plug	1.00	30
2	90 31 09 095 00 90	bar	1.00	2
5	90 21 02 112 00-09	sleeve	1.00	40
7	90 21 33 011 00-13	handle	1.00	2
1	90 15 02 065 00 90	cartridge	1.00	2