








MADISON xTOOL Concealed thermostat without volume control 3/4" - Brushed Platinum
MADISON


36 503 977
Product version up to 1/1/2022



- cover plate Ø 124 mm
- temperature control handle with safety limit stop at 38°C
- thermostat cartridge
- WRAS

|   |                               |               |
|---|-------------------------------|---------------|
|  | Brushed Platinum              | 36 503 977-06 |
|  | Chrome                        | 36 503 977-00 |
|  | Platinum                      | 36 503 977-08 |
|  | Durabrand (23kt Gold)         | 36 503 977-09 |
|  | Brushed Durabrand (23kt Gold) | 36 503 977-28 |
|  | Brushed Dark Platinum         | 36 503 977-99 |


Required miscellaneous



**xTOOL Concealed thermostat module without volume control -**  
 •max. recess depth 110 mm  
 •min. recess depth 85 mm

35 503 970 90


Recommended miscellaneous



**xGRID Attachment set for integrating in the dry wall construction -**

12 340 970 90

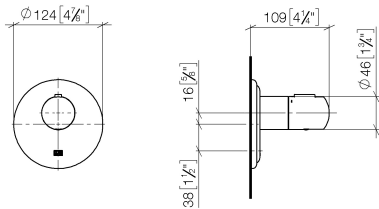
Required miscellaneous



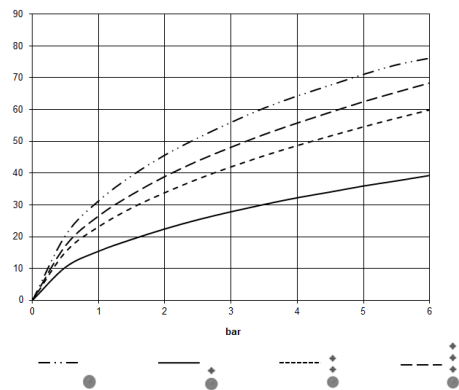
**xGRID Installation track 555 mm -**

12 360 970 90

36 503 977 Product version up to 1/1/2022  
mm [inches]



### Flow rate chart



### Codes & Standards

DIN 4109

EN 1111

ISO 3822

Scottish Water  
Byelaws

UK Water Supply  
Regulations

Ü-Zeichen



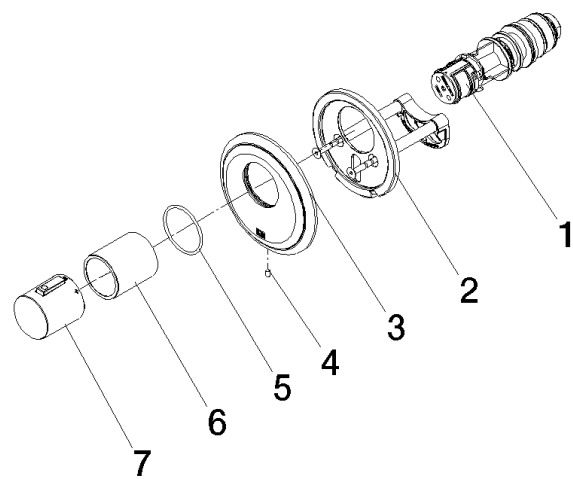
MADISON xTOOL Concealed thermostat without volume control 3/4" - Brushed  
Platinum

MADISON

36 503 977    Product version up to 1/1/2022

Certificates and sustainability

|           |                     |        |        |
|-----------|---------------------|--------|--------|
| WRAS_2011 | DVGW_DW-<br>6512DN0 | LGA_29 | LGA_29 |
|-----------|---------------------|--------|--------|



Spare parts list

| No. | Item Number          | Name      | Quantity used | Delivery time |
|-----|----------------------|-----------|---------------|---------------|
|     | 2 90 11 01 196 00 90 | base      | 1.00          | 2             |
|     | 3 09 11 02 543-06    | cover     | 1.00          | 10            |
|     | 4 09 31 11 048 90    | pin       | 1.00          | 2             |
|     | 7 90 17 33 005 01-06 | handle    | 1.00          | 10            |
|     | 6 90 21 02 112 00-06 | sleeve    | 1.00          | 10            |
|     | 5 90 14 10 049 00 90 | seal      | 1.00          | 2             |
|     | 1 90 15 02 063 00 90 | cartridge | 1.00          | 2             |