

MADISON Wall valve clockwise closing 1/2" - Brushed Durabrand (23kt Gold)


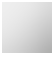
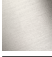



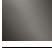
MADISON

36 607 361

Product version from 7/1/2025



- rosette Ø 55 mm
- head part with cut-to-length spindle and sleeve
- 3x porcelain insert: HOT, COLD and NEUTRAL
- WRAS

	Brushed Durabrand (23kt Gold)	36 607 361-28
	Chrome	36 607 361-00
	Brushed Platinum	36 607 361-06
	Platinum	36 607 361-08
	Durabrand (23kt Gold)	36 607 361-09
	Brushed Dark Brass	36 607 361-39
	Brushed Dark Platinum	36 607 361-99

Required miscellaneous



- Wall valve 1/2" -

•max. recess depth 145 mm

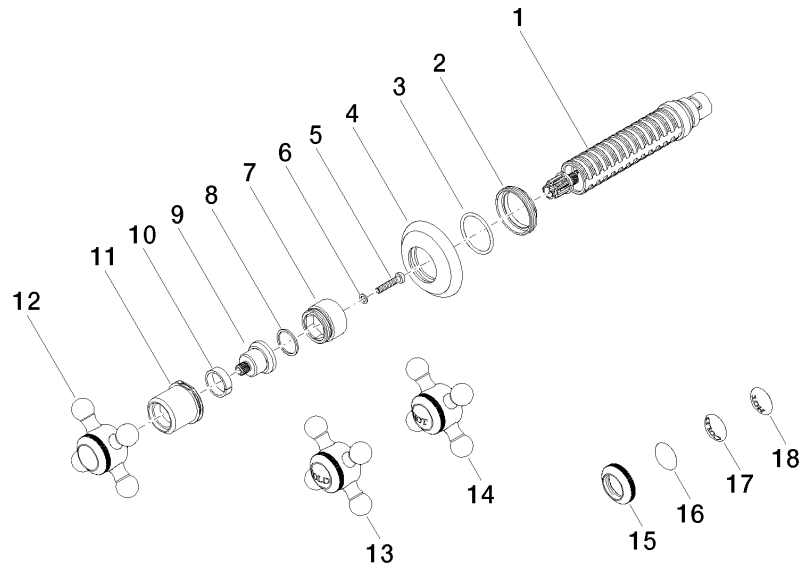
•min. recess depth 75 mm

35 607 970 90



Codes & Standards			
DIN 4109	EN 1111	EN 200	ISO 3822
Scottish Water Byelaws	UK Water Supply Regulations	Ü-Zeichen	

Certificates and sustainability				
DVGW_DW-6501DN0	WRAS_2011	LGA_29	WRAS_2010	DVGW_DW-6512DN0
LGA_29				





MADISON Wall valve clockwise closing 1/2" - Brushed Durabron (23kt Gold)

MADISON

36 607 361 Product version from 7/1/2025

Spare parts list

No.	Item Number	Name	Quantity used	Delivery time
13	04 20 36 100 00-28	handle (cold)	1.00	20
7	09 18 30 007-28	sleeve	1.00	-
Spare part can no longer be ordered, please order the replacement item				
9	09 12 12 064-28	base	1.00	-
Spare part can no longer be ordered, please order the replacement item				
16	09 26 01 016 90	accessories	1.00	2
1	90 90 03 143 00 90	top	1.00	2
18	09 26 01 011 90	accessories	1.00	2
11	09 21 02 161-28	cover	1.00	20
6	09 30 11 194 90	disc	1.00	2
15	09 20 36 005-28	handle	1.00	20
2	09 23 10 125-00	nut	1.00	10
17	09 26 01 010 90	accessories	1.00	2
12	04 20 36 100 02-28	handle	1.00	20
14	04 20 36 100 01-28	handle (hot)	1.00	20
4	09 27 36 102-28	rosette	1.00	20
10	90 14 15 021 00 90	ring	1.00	2
5	90 30 30 075 00 90	screw	1.00	2
8	90 28 10 030 00 90	ring	1.00	2
3	90 14 10 063 00 90	seal	1.00	2