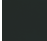








36 607 671 Product version from 4/1/2024



- rosette Ø 60 mm
- head part with cut-to-length spindle and sleeve

	Matte Black	36 607 671-33
	Chrome	36 607 671-00
	Brushed Platinum	36 607 671-06
	Dark Chrome	36 607 671-19
	Brushed Light Gold	36 607 671-27
	Brushed Chrome	36 607 671-93
	Brushed Dark Platinum	36 607 671-99

Required miscellaneous

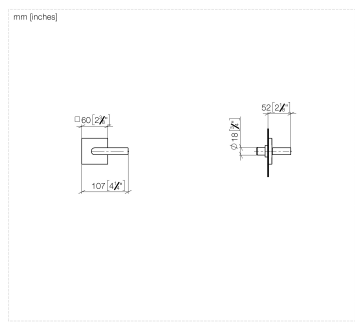


Wall valve 1/2" -

- min. recess depth 105 mm
- max. recess depth 150 mm

35 607 970 90

36 607 671 Product version from 4/1/2024



Codes & Standards

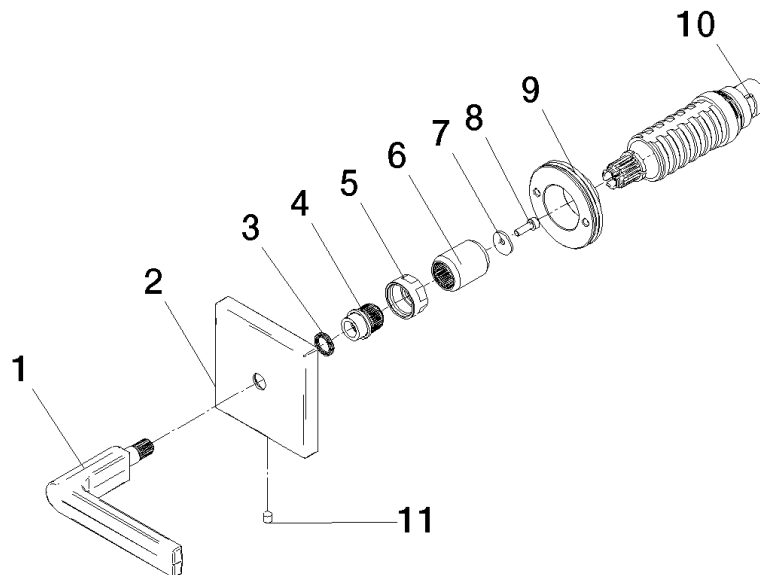
DIN 4109

ISO 3822

Ü-Zeichen

Certificates and sustainability

LGA_38



Spare parts list

No.	Item Number	Name	Quantity used	Delivery time
1	90 20 67 024 00-33	handle	1.00	30
2	09 27 78 033-33	rosette	1.00	60
5	09 23 30 074 90	nut	1.00	2
11	90 31 11 007 00 90	pin	1.00	2
9	90 21 02 108 00 90	disc	1.00	2
7	09 30 11 193 90	disc	1.00	2
3	09 14 03 187 90	seal	1.00	2
8	09 30 30 167 90	screw	1.00	2
10	90 90 03 143 00 90	top	1.00	2
6	09 12 12 059 90	sleeve	1.00	2
4	09 12 12 057 90	fixing cap	1.00	2