

Wall valve anti-clockwise closing hot 1/2" - Brushed Champagne (22kt Gold)

SERIES SPECIFIC

36 607 742 Product version from 7/1/2023



- without rosette
- handle Ø 60mm
- with hot marking
- head part with cut-to-length spindle and sleeve
- WRAS

| | | |
|---|--------------------------------|---------------|
|  | Brushed Champagne (22kt Gold) | 36 607 742-46 |
|  | Chrome | 36 607 742-00 |
|  | Brushed Platinum | 36 607 742-06 |
|  | Dark Chrome | 36 607 742-19 |
|  | Brushed Durabronze (23kt Gold) | 36 607 742-28 |
|  | Matte Black | 36 607 742-33 |
|  | Brushed Bronze | 36 607 742-42 |
|  | Champagne (22kt Gold) | 36 607 742-47 |
|  | Brushed Dark Platinum | 36 607 742-99 |



Wall valve anti-clockwise closing hot 1/2" - Brushed Champagne (22kt Gold)

SERIES SPECIFIC

36 607 742 Product version from 7/1/2023

mm [inches]



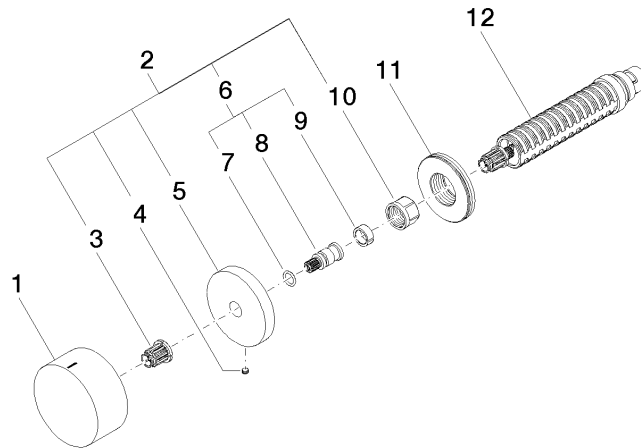
Codes & Standards

| | | | |
|------------------------|-----------------------------|-----------|----------|
| ASME A112.18.1 | cUPC | DIN 4109 | ISO 3822 |
| Scottish Water Byelaws | UK Water Supply Regulations | Ü-Zeichen | |

Certificates and sustainability

| | | | |
|--------|--------|-----------|--------------|
| LGA_38 | LGA_29 | WRAS_2010 | IAPMO_4976 (|
|--------|--------|-----------|--------------|

Parts for other
finishes can be found
here: [Chrome](#)



Spare parts list

| No. | Item Number | Name | Quantity used | Delivery time |
|-----|--------------------|----------------|---------------|---------------|
| 5 | 09 27 74 004-46 | rosette | 1.00 | 60 |
| 9 | 90 14 15 020 03 90 | ring | 1.00 | 2 |
| 7 | 90 14 10 060 00 90 | seal | 1.00 | 2 |
| 3 | 90 12 12 002 00 90 | fixing cap | 1.00 | 2 |
| 6 | 04 29 06 020 00-00 | spindle | 1.00 | 10 |
| 1 | 09 20 74 021-46 | handle (hot) | 1.00 | 60 |
| 11 | 09 30 01 107 90 | sleeve | 1.00 | 2 |
| 12 | 90 90 03 142 00 90 | top | 1.00 | 2 |
| 10 | 90 23 30 023 00 90 | nut | 1.00 | 2 |
| 2 | 04 27 74 004 00-46 | rosette | 1.00 | 60 |
| 4 | 09 31 11 055 90 | pin | 1.00 | 2 |
| 8 | 09 29 06 020-46 | spindle | 1.00 | - |

Spare part can no longer be ordered, please order the replacement item