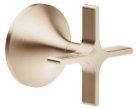


## VAIA Wall valve clockwise closing 1/2" - Brushed Champagne (22kt Gold)

VAIA

36 607 809 Product version from 4/1/2025



- rosette Ø 60 mm
- head part with cut-to-length spindle and sleeve
- WRAS

	Brushed Champagne (22kt Gold)	36 607 809-46
	Chrome	36 607 809-00
	Brushed Platinum	36 607 809-06
	Platinum	36 607 809-08
	Dark Chrome	36 607 809-19
	Brushed Durabronze (23kt Gold)	36 607 809-28
	Brushed Dark Brass	36 607 809-39
	Brushed Bronze	36 607 809-42
	Champagne (22kt Gold)	36 607 809-47
	Brushed Dark Platinum	36 607 809-99

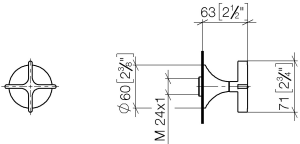
### Required miscellaneous



#### Wall valve 1/2" -

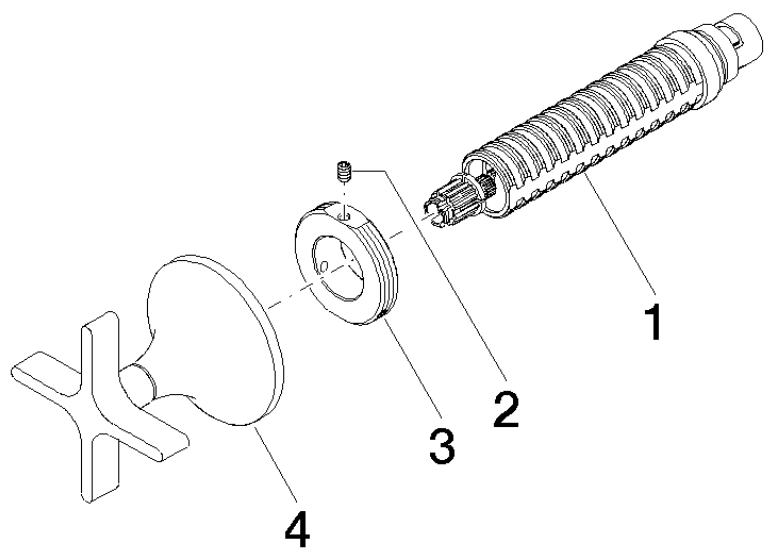
35 607 970 90

- max. recess depth 145 mm
- min. recess depth 75 mm



Codes & Standards			
ASME A112.18.1	cUPC	DIN 4109	EN 1111
EN 200	ISO 3822	Scottish Water Byelaws	UK Water Supply Regulations
Ü-Zeichen			

Certificates and sustainability				
DVGW_DW-6501DN0	WRAS_2011	LGA_29	WRAS_2010	DVGW_DW-6512DN0
IAPMO_4976 (				



### Spare parts list

No.	Item Number	Name	Quantity used	Delivery time
2	09 31 11 008 90	pin	1.00	2
3	09 21 02 163 90	disc	1.00	2
1	90 90 03 143 00 90	top	1.00	2
4	90 20 80 014 00-46	handle	1.00	30