

TARA Wall valve clockwise closing 1/2" - Brushed Durabronze (23kt Gold)

TARA

36 607 882 Product version from 10/14/2020 to 8/1/2021



- rosette Ø 55 mm
- head part with cut-to-length spindle and sleeve
- WRAS

| | | |
|---|--------------------------------|---------------|
|  | Brushed Durabronze (23kt Gold) | 36 607 882-28 |
|  | Chrome | 36 607 882-00 |
|  | Brushed Platinum | 36 607 882-06 |
|  | Platinum | 36 607 882-08 |
|  | Dark Chrome | 36 607 882-19 |
|  | Matte Black | 36 607 882-33 |
|  | Brushed Dark Brass | 36 607 882-39 |
|  | Brushed Bronze | 36 607 882-42 |
|  | Brushed Champagne (22kt Gold) | 36 607 882-46 |
|  | Champagne (22kt Gold) | 36 607 882-47 |
|  | Brushed Chrome | 36 607 882-93 |
|  | Brushed Dark Platinum | 36 607 882-99 |

Required miscellaneous

- Wall valve 1/2" -** 35 607 970 90
- max. recess depth 145 mm
 - min. recess depth 85 mm



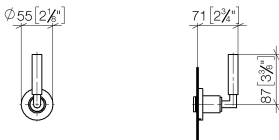
TARA Wall valve clockwise closing 1/2" - Brushed Durabronze (23kt Gold)

TARA

36 607 882

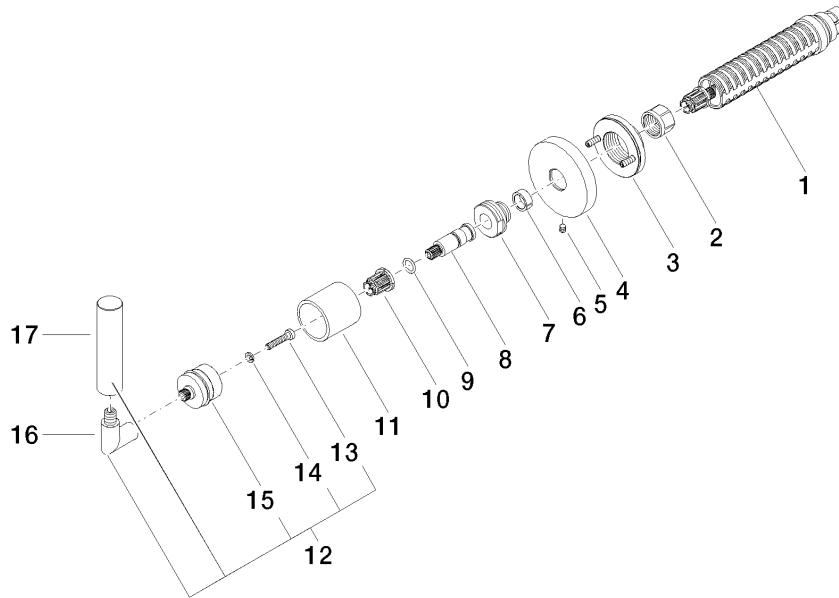
Product version from 10/14/2020 to 8/1/2021

mm [inches]



| Codes & Standards | | | |
|------------------------|-----------------------------|-----------|----------|
| DIN 4109 | EN 1111 | EN 200 | ISO 3822 |
| Scottish Water Byelaws | UK Water Supply Regulations | Ü-Zeichen | |

| Certificates and sustainability | | | | |
|---------------------------------|-----------|--------|-----------|-----------------|
| DVGW_DW-6501DN0 | WRAS_2011 | LGA_29 | WRAS_2010 | DVGW_DW-6512DN0 |
| LGA_29 | | | | |



Spare parts list

| No. | Item Number | Name | Quantity used | Delivery time |
|--|--------------------|------------|---------------|---------------|
| 3 | 90 21 02 108 00 90 | disc | 1.00 | 2 |
| 17 | 09 20 88 052-28 | handle | 1.00 | 20 |
| 12 | 04 20 88 052 00-28 | handle | 1.00 | 20 |
| 1 | 90 90 03 143 00 90 | top | 1.00 | 2 |
| 8 | 09 29 06 022 90 | spindle | 1.00 | 2 |
| 7 | 09 24 05 002 90 | nipple | 1.00 | 2 |
| 4 | 09 27 89 115-28 | rosette | 1.00 | 20 |
| 15 | 90 12 12 007 00-28 | base | 1.00 | 20 |
| 10 | 90 12 12 002 00 90 | fixing cap | 1.00 | 2 |
| 11 | 09 21 02 144-28 | sleeve | 1.00 | 20 |
| 16 | 04 18 20 022 00-28 | angle | 1.00 | - |
| Spare part can no longer be ordered, please order the replacement item | | | | |
| 5 | 90 31 11 007 00 90 | pin | 1.00 | 2 |
| 6 | 90 14 15 020 03 90 | ring | 1.00 | 2 |
| 14 | 90 30 11 029 00 90 | disc | 1.00 | 2 |
| 2 | 90 23 30 023 00 90 | nut | 1.00 | 2 |
| 9 | 90 14 10 060 00 90 | seal | 1.00 | 2 |
| 13 | 90 30 30 075 00 90 | screw | 1.00 | 2 |