




IMO Wall valve anti-clockwise closing 1/2" - Brushed Light Gold

IMO

36 607 980 Product version from 6/1/2024



- rosette 60 x 60 mm
- head part with cut-to-length spindle and sleeve
- WRAS

	Brushed Light Gold	36 607 980-27
	Chrome	36 607 980-00
	Brushed Platinum	36 607 980-06
	Platinum	36 607 980-08
	Dark Chrome	36 607 980-19
	Brushed Durabronze (23kt Gold)	36 607 980-28
	Matte Black	36 607 980-33
	Brushed Chrome	36 607 980-93
	Brushed Dark Platinum	36 607 980-99

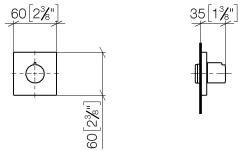


IMO Wall valve anti-clockwise closing 1/2" - Brushed Light Gold

IMO

36 607 980 Product version from 6/1/2024

mm [inches]



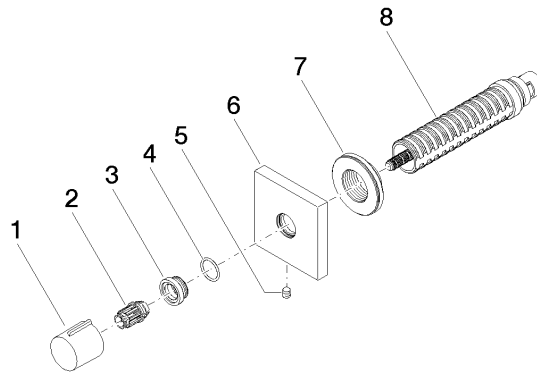
Codes & Standards

DIN 4109	EN 1111	ISO 3822	Scottish Water Byelaws
UK Water Supply Regulations	Ü-Zeichen		

Certificates and sustainability

WRAS_2011	LGA_29	WRAS_2010	DVGW_DW-6512DN0
-----------	--------	-----------	-----------------

Parts for other
finishes can be found
here: [Chrome](#)



Spare parts list

No.	Item Number	Name	Quantity used	Delivery time
6	09 27 98 014-27	rosette	1.00	60
5	90 31 11 004 00 90	pin	1.00	2
4	09 14 10 017 90	seal	1.00	2
2	09 12 12 005 90	fixing cap	1.00	2
1	09 20 98 001-27	handle	1.00	60
3	09 12 12 043-27	base	1.00	60
7	09 21 02 151 90	sleeve	1.00	2
8	90 90 03 202 00 90	top	1.00	2