

IMO Wall valve anti-clockwise closing 3/4" - Brushed Platinum

IMO

36 608 980 Product version from 6/1/2024



- rosette 60 x 60 mm
- head part with cut-to-length spindle and sleeve
- WRAS

	Brushed Platinum	36 608 980-06
	Chrome	36 608 980-00
	Platinum	36 608 980-08
	Dark Chrome	36 608 980-19
	Brushed Light Gold	36 608 980-27
	Brushed Durabronze (23kt Gold)	36 608 980-28
	Matte Black	36 608 980-33
	Brushed Chrome	36 608 980-93
	Brushed Dark Platinum	36 608 980-99

Required miscellaneous

- | | | |
|---|---|---------------|
|  | Wall valve 3/4" -
• max. recess depth 145 mm
• min. recess depth 75 mm | 35 608 970 90 |
|---|---|---------------|

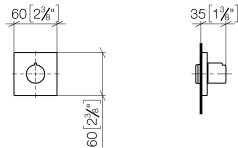


IMO Wall valve anti-clockwise closing 3/4" - Brushed Platinum

IMO

36 608 980 Product version from 6/1/2024

mm [inches]

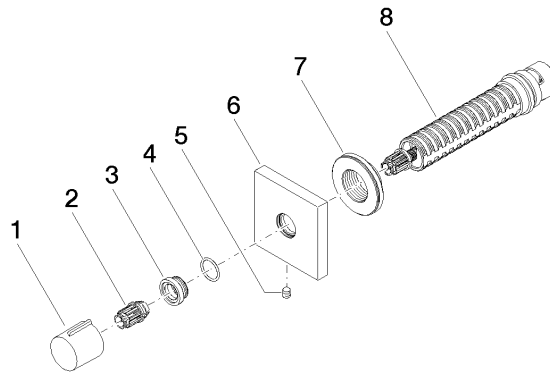


Codes & Standards

ASME A112.18.1	cUPC	Scottish Water Byelaws	UK Water Supply Regulations
----------------	------	---------------------------	--------------------------------

Certificates and sustainability

WRAS_2010 IAPMO_4976 (



Spare parts list

No.	Item Number	Name	Quantity used	Delivery time
4	09 14 10 017 90	seal	1.00	2
7	09 21 02 151 90	sleeve	1.00	2
1	09 20 98 001-06	handle	1.00	10
8	90 90 03 128 00 90	top	1.00	2
6	09 27 98 014-06	rosette	1.00	10
3	09 12 12 043-06	base	1.00	10
2	09 12 12 005 90	fixing cap	1.00	2
5	90 31 11 004 00 90	pin	1.00	2