

IMO Wall valve anti-clockwise closing 3/4" - Platinum
IMO

36 608 980
Product version from 6/1/2024



- rosette 60 x 60 mm
- head part with cut-to-length spindle and sleeve
- WRAS

|   |                                   |               |
|---|-----------------------------------|---------------|
|  | Platinum                          | 36 608 980-08 |
|  | Chrome                            | 36 608 980-00 |
|  | Brushed Platinum                  | 36 608 980-06 |
|  | Dark Chrome                       | 36 608 980-19 |
|  | Brushed Light Gold                | 36 608 980-27 |
|  | Brushed Durabronze<br>(23kt Gold) | 36 608 980-28 |
|  | Matte Black                       | 36 608 980-33 |
|  | Brushed Chrome                    | 36 608 980-93 |
|  | Brushed Dark<br>Platinum          | 36 608 980-99 |

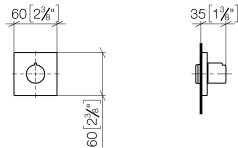
Required miscellaneous



- Wall valve 3/4" -**
35 608 970 90

  - max. recess depth 145 mm
  - min. recess depth 75 mm

mm [inches]

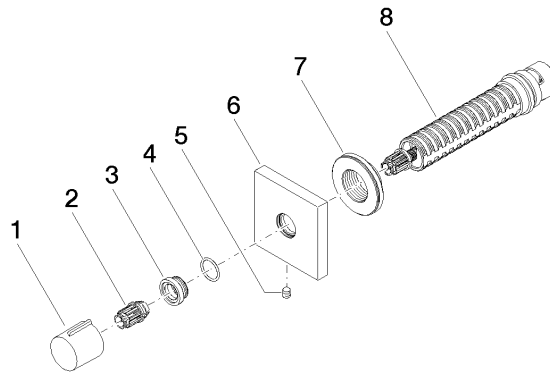


Codes & Standards

|                |      |                           |                                |
|----------------|------|---------------------------|--------------------------------|
| ASME A112.18.1 | cUPC | Scottish Water<br>Byelaws | UK Water Supply<br>Regulations |
|----------------|------|---------------------------|--------------------------------|

Certificates and sustainability

|           |              |
|-----------|--------------|
| WRAS_2010 | IAPMO_4976 ( |
|-----------|--------------|



## Spare parts list

| No. | Item Number        | Name       | Quantity used | Delivery time |
|-----|--------------------|------------|---------------|---------------|
| 4   | 09 14 10 017 90    | seal       | 1.00          | 2             |
| 2   | 09 12 12 005 90    | fixing cap | 1.00          | 2             |
| 7   | 09 21 02 151 90    | sleeve     | 1.00          | 2             |
| 8   | 90 90 03 128 00 90 | top        | 1.00          | 2             |
| 6   | 09 27 98 014-08    | rosette    | 1.00          | 40            |
| 3   | 09 12 12 043-08    | base       | 1.00          | 40            |
| 1   | 09 20 98 001-08    | handle     | 1.00          | 40            |
| 5   | 90 31 11 004 00 90 | pin        | 1.00          | 2             |