

TARA Wall-mounted basin mixer without pop-up waste - Brushed Bronze

TARA

36 707 892 Product version from 4/1/2024

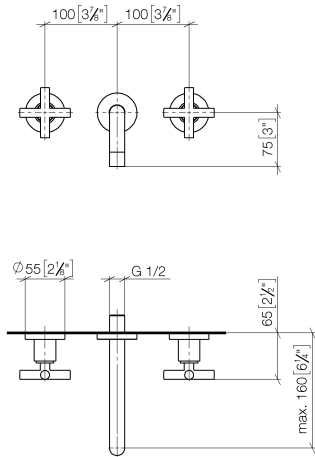


- 160mm projection
- fixed spout
- circular, air-enriched flow
- hole diameter valve 40 mm
- hole diameter spout 40 mm
- rosettes Ø 55 mm
- max. flow 7 l/min
- lead-free
- WRAS
- This product can help a building meet the requirements of Green Building Rating Systems, e.g. LEED®, BREEAM®, DGNB

	Brushed Bronze	36 707 892-42
	Chrome	36 707 892-00
	Brushed Platinum	36 707 892-06
	Platinum	36 707 892-08
	Dark Chrome	36 707 892-19
	Brushed Durabrass (23kt Gold)	36 707 892-28
	Matte Black	36 707 892-33
	Brushed Champagne (22kt Gold)	36 707 892-46
	Champagne (22kt Gold)	36 707 892-47
	Brushed Chrome	36 707 892-93
	Brushed Dark Platinum	36 707 892-99

36 707 892 Product version from 4/1/2024

mm [inches]



Flow rate chart



Codes & Standards

DIN 4109 ISO 3822 Ü-Zeichen



TARA Wall-mounted basin mixer without pop-up waste - Brushed Bronze

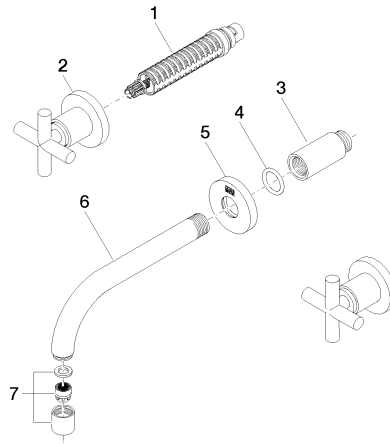
TARA

36 707 892 Product version from 4/1/2024

Certificates and sustainability

LGA_18

Parts for other
finishes can be found
here: [Chrome](#)



Spare parts list

No.	Item Number	Name	Quantity used	Delivery time
7	90 23 01 019 00-42	aerator	1.00	30
6	04 28 22 089 10-42	spout	1.00	60
3	09 24 03 081 10 90	extension	1.00	2
4	90 14 10 026 00 90	seal	1.00	2
2	36 310 892-42	TARA Wall valve - Brushed Bronze	2.00	-
Spare part can no longer be ordered, please order the replacement item				
1	90 90 03 157 00 90	top	2.00	2
5	09 27 22 503-42	rosette	1.00	60