

VAIA Wall-mounted basin mixer without pop-up waste - Brushed Durabrass (23kt Gold)

VAIA

36 712 819 Product version from 3/13/2017



- 190mm projection
- fixed spout
- circular, air-enriched flow
- hole diameter valve 37 mm
- hole diameter spout 40 mm
- rosettes Ø 60 mm
- max. flow 5.7 l/min
- lead-free
- This product can help a building meet the requirements of Green Building Rating Systems, e.g. LEED®, BREEAM®, DGNB
- WRAS

	Brushed Durabrass (23kt Gold)	36 712 819-28
	Chrome	36 712 819-00
	Brushed Platinum	36 712 819-06
	Platinum	36 712 819-08
	Dark Chrome	36 712 819-19
	Brushed Dark Brass	36 712 819-39
	Brushed Bronze	36 712 819-42
	Brushed Champagne (22kt Gold)	36 712 819-46
	Champagne (22kt Gold)	36 712 819-47
	Brushed Dark Platinum	36 712 819-99

Required miscellaneous



- Concealed wall-mounted mixer** 35 700 970 90
centred spout -
 • max. recess depth 145 mm
 • min. recess depth 85 mm

Required miscellaneous

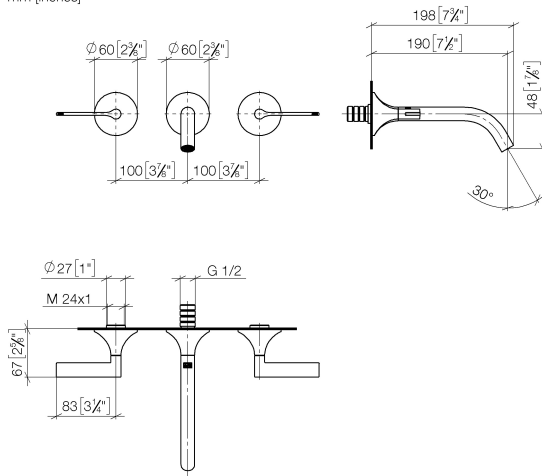


- Concealed wall-mounted mixer** 35 720 970 90
variable positioning -
 • min. recess depth 85 mm
 • max. recess depth 145 mm

VAIA Wall-mounted basin mixer without pop-up waste - Brushed Durabrass (23kt Gold)

VAIA

36 712 819 Product version from 3/13/2017
mm [inches]



Flow rate chart



Codes & Standards

DIN 4109

ISO 3822

Scottish Water
Byelaws

UK Water Supply
Regulations

Ü-Zeichen



VAIA Wall-mounted basin mixer without pop-up waste - Brushed Durabrass (23kt Gold)

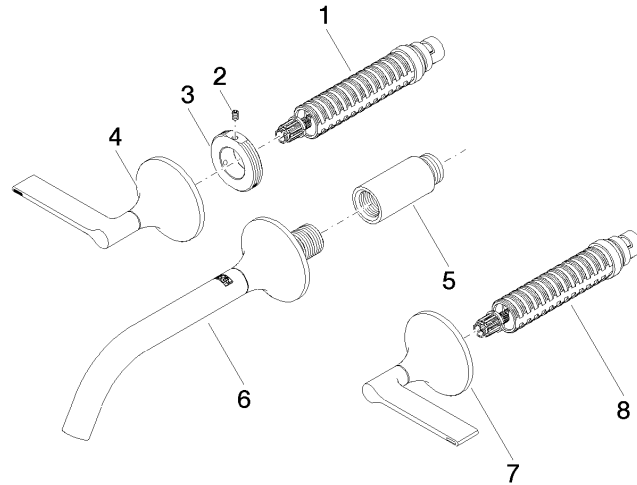
VAIA

36 712 819 Product version from 3/13/2017

Certificates and sustainability

LGA_29

WRAS_2312



Spare parts list

No.	Item Number	Name	Quantity used	Delivery time
2	09 31 11 008 90	pin	2.00	2
8	90 90 03 156 00 90	top	1.00	2
5	09 24 03 081 10 90	extension	1.00	2
3	09 21 02 163 90	disc	2.00	2
4	90 20 80 013 00-28	handle (hot)	1.00	20
6	13 800 809-28	VAIA Wall-mounted basin spout without pop-up waste - Brushed Durabronss (23kt Gold)	1.00	20
1	90 90 03 157 00 90	top	1.00	2
7	90 20 80 012 00-28	handle (cold)	1.00	20