

## TARA Wall-mounted basin mixer without pop-up waste - Dark Chrome

TARA

36 712 882



- 190mm projection
- circular, air-enriched flow
- hole diameter valve 40 mm
- hole diameter spout 40 mm
- rosette Ø 55 mm
- max. flow 7 l/min
- lead-free
- WRAS
- This product can help a building meet the requirements of Green Building Rating Systems, e.g. LEED®, BREEAM®, DGNB

|   |                                |               |
|---|--------------------------------|---------------|
|    | Dark Chrome                    | 36 712 882-19 |
|    | Chrome                         | 36 712 882-00 |
|    | Brushed Platinum               | 36 712 882-06 |
|    | Platinum                       | 36 712 882-08 |
|    | Brushed Durabronze (23kt Gold) | 36 712 882-28 |
|    | Matte Black                    | 36 712 882-33 |
|    | Brushed Dark Brass             | 36 712 882-39 |
|    | Brushed Bronze                 | 36 712 882-42 |
|    | Brushed Champagne (22kt Gold)  | 36 712 882-46 |
|   | Champagne (22kt Gold)          | 36 712 882-47 |
|  | Brushed Chrome                 | 36 712 882-93 |
|  | Brushed Dark Platinum          | 36 712 882-99 |

### Required miscellaneous



- Concealed wall-mounted mixer centred spout -** 35 700 970 90
- max. recess depth 145 mm
  - min. recess depth 85 mm

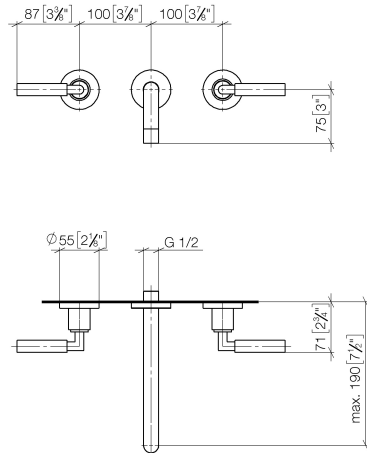
### Required miscellaneous



- Concealed wall-mounted mixer variable positioning -** 35 720 970 90
- min. recess depth 85 mm
  - max. recess depth 145 mm

36 712 882

mm [inches]



### Flow rate chart



### Codes & Standards

DIN 4109

ISO 3822

Ü-Zeichen



## TARA Wall-mounted basin mixer without pop-up waste - Dark Chrome

---

TARA

36 712 882

Certificates and sustainability

---

LGA\_18

