

META Wall-mounted single-lever basin mixer without pop-up waste - Dark Chrome

## META

36 805 661 Product version from 4/1/2024



- 160mm projection
- fixed spout
- circular, air-enriched flow
- hole diameter 60 mm
- rosette Ø 78 mm
- max. spout flow rate 5.7 l/min
- with single-point mounting

|   |                                     |               |
|---|-------------------------------------|---------------|
|  | Dark Chrome                         | 36 805 661-19 |
|  | Chrome                              | 36 805 661-00 |
|  | Brushed Platinum                    | 36 805 661-06 |
|  | Light Gold                          | 36 805 661-26 |
|  | Brushed Light Gold                  | 36 805 661-27 |
|  | Matte Black                         | 36 805 661-33 |
|  | Brushed Bronze                      | 36 805 661-42 |
|  | Brushed<br>Champagne (22kt<br>Gold) | 36 805 661-46 |
|  | Champagne (22kt<br>Gold)            | 36 805 661-47 |
|  | Brushed Chrome                      | 36 805 661-93 |
|  | Brushed Dark<br>Platinum            | 36 805 661-99 |

## Required miscellaneous

### Concealed wall mounting -

35 050 970 90

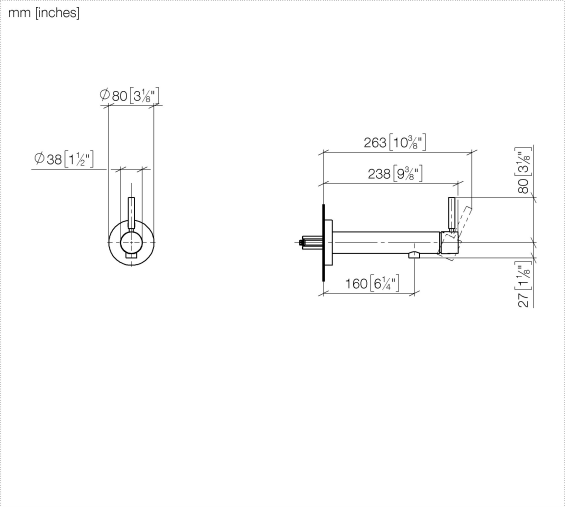


- min. recess depth 80 mm
- max. recess depth 105 mm

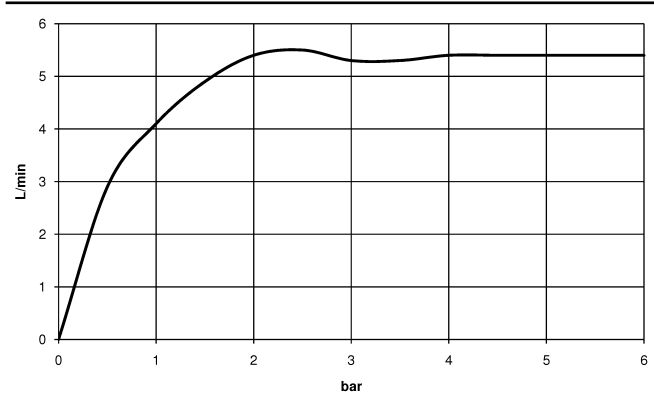
**META Wall-mounted single-lever basin mixer without pop-up waste - Dark Chrome**

META

36 805 661    Product version from 4/1/2024



Flow rate chart



Codes & Standards

DIN 4109                      ISO 3822                      Ü-Zeichen



## META Wall-mounted single-lever basin mixer without pop-up waste - Dark Chrome

META

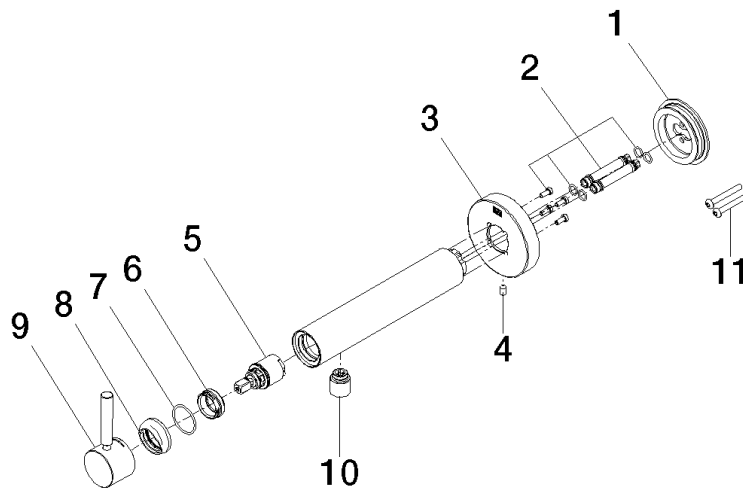
---

36 805 661 Product version from 4/1/2024

Certificates and sustainability

---

LGA\_38



## Spare parts list

| No. | Item Number        | Name       | Quantity used | Delivery time |
|-----|--------------------|------------|---------------|---------------|
| 6   | 09 24 04 266 90    | nut        | 1.00          | 2             |
| 11  | 90 30 30 229 00 90 | screw      | 2.00          | 2             |
| 7   | 09 14 10 120 90    | seal       | 1.00          | 2             |
| 4   | 09 31 11 144 90    | pin        | 1.00          | 2             |
| 3   | 90 27 66 026 00-19 | rosette    | 1.00          | 20            |
| 9   | 90 20 66 024 00-19 | handle     | 1.00          | 20            |
| 1   | 90 30 11 232 00 90 | disc       | 1.00          | 2             |
| 2   | 90 24 01 046 01 90 | connection | 2.00          | 2             |
| 5   | 90 15 05 044 00 90 | cartridge  | 1.00          | 2             |
| 8   | 09 28 30 043-19    | cover      | 1.00          | 20            |
| 10  | 90 23 01 168 00-19 | aerator    | 1.00          | 20            |