

## META META SLIM Wall-mounted single-lever basin mixer without pop-up waste - Chrome

META

36 860 662 Product version up to 9/1/2021



- 190mm projection
- fixed spout
- circular, air-enriched flow
- hole diameter spout 37 mm
- hole diameter single-lever mixer 57 mm
- rosette for spout Ø 55mm
- rosette for mixer Ø 78mm
- max. flow 5.7 l/min
- lead-free
- This product can help a building meet the requirements of Green Building Rating Systems, e.g. LEED®, BREEAM®, DGNB

	Chrome	36 860 662-00
	Brushed Platinum	36 860 662-06
	Dark Chrome	36 860 662-19
	Light Gold	36 860 662-26
	Brushed Light Gold	36 860 662-27
	Matte Black	36 860 662-33
	Brushed Dark Brass	36 860 662-39
	Brushed Bronze	36 860 662-42
	Brushed Champagne (22kt Gold)	36 860 662-46
	Champagne (22kt Gold)	36 860 662-47
	Brushed Chrome	36 860 662-93
	Brushed Dark Platinum	36 860 662-99

### Required miscellaneous



#### Concealed wall-mounted single-lever mixer - 35 860 970 90

- max. recess depth 95 mm
- min. recess depth 80 mm
- mixer can be placed above, to the left or to the right of the spout.

### Required miscellaneous



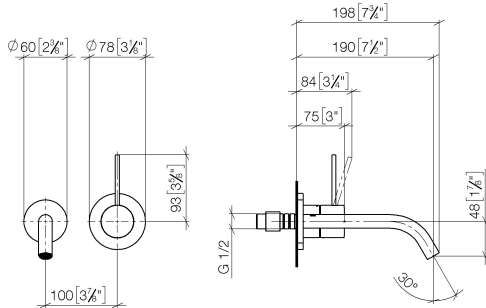
#### Concealed wall-mounted single-lever mixer mixer on right - 35 816 970 90

- NOTE: Not suitable for concealed installation. Connection by means of angle valves, mounted with screws to back wall.

# META META SLIM Wall-mounted single-lever basin mixer without pop-up waste - Chrome

META

36 860 662 Product version up to 9/1/2021  
mm [inches]



Flow rate chart



Trajectory diagram



## Codes & Standards

DIN 4109

EN 817

ISO 3822

Ü-Zeichen



## META META SLIM Wall-mounted single-lever basin mixer without pop-up waste - Chrome

META

---

36 860 662 Product version up to 9/1/2021

Certificates and sustainability

---

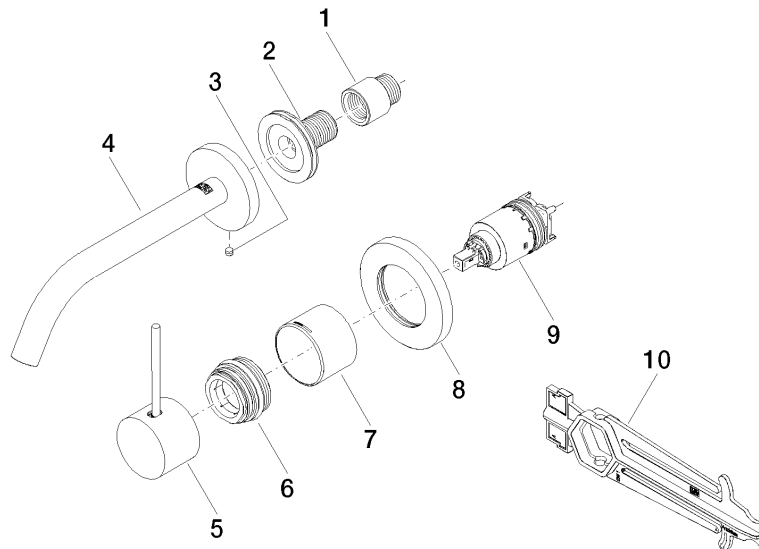
DVGW\_DW-  
6512DN0

LGA\_29

# META META SLIM Wall-mounted single-lever basin mixer without pop-up waste - Chrome

META

36 860 662 Product version up to 9/1/2021



## Spare parts list

No.	Item Number	Name	Quantity used	Delivery time
2	90 24 03 280 00 90	nipple	1.00	2
3	09 31 11 112 90	pin	1.00	60
4	90 28 22 323 00-00	spout	1.00	10
9	90 15 05 064 01 90	cartridge	1.00	2
6	90 24 04 537 00 90	threaded connector	1.00	2
7	09 11 02 334-00	cover	1.00	10
8	90 27 62 011 00-00	rosette	1.00	10
5	90 20 66 022 00-00	handle	1.00	10
1	09 24 03 072 10 90	nipple	1.00	2
10	90 30 09 064 00 90	key	1.00	2