


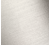



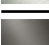
LISSÉ Wall-mounted single-lever basin mixer without pop-up waste - Chrome

LISSÉ

36 860 845



- 170mm projection
- fixed spout
- circular, air-enriched flow
- hole diameter spout 37 mm
- hole diameter single-lever mixer 57 mm
- rosette 78 x 78 mm
- max. flow 5.7 l/min
- lead-free
- This product can help a building meet the requirements of Green Building Rating Systems, e.g. LEED®, BREEAM®, DGNB
- WRAS 2107018

| | | |
|--|-----------------------|---------------|
|  | Chrome | 36 860 845-00 |
|  | Brushed Platinum | 36 860 845-06 |
|  | Dark Chrome | 36 860 845-19 |
|  | Matte Black | 36 860 845-33 |
|  | Brushed Chrome | 36 860 845-93 |
|  | Brushed Dark Platinum | 36 860 845-99 |

Required miscellaneous



- Concealed wall-mounted single-lever mixer on right -** 35 816 970 90
- NOTE: Not suitable for concealed installation. Connection by means of angle valves, mounted with screws to back wall.

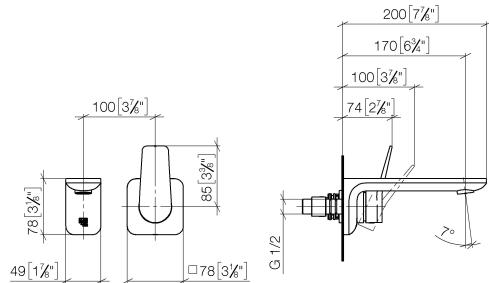
Required miscellaneous



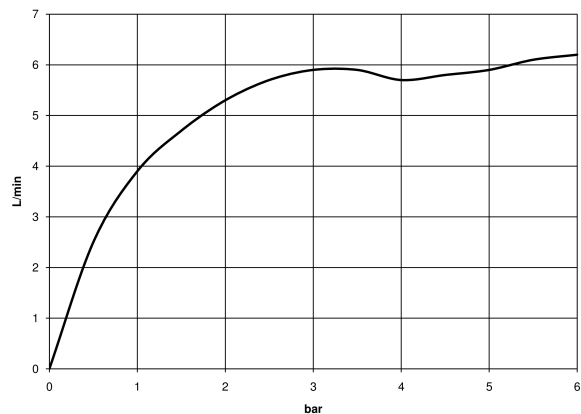
- Concealed wall-mounted single-lever mixer -** 35 860 970 90
- max. recess depth 95 mm
 - min. recess depth 80 mm

36 860 845


mm [inches]



Flow rate chart



Codes & Standards

| | | | |
|------------------------|-----------------------------|-----------|--|
| ASME A112.18.1 | cUPC | DIN 4109 | EN 817 |
| EPA WaterSense | ISO 3822 | NSF372 | NSF61 |
| Scottish Water Byelaws | UK Water Supply Regulations | Ü-Zeichen | WaterSense  |



LISSE Wall-mounted single-lever basin mixer without pop-up waste - Chrome

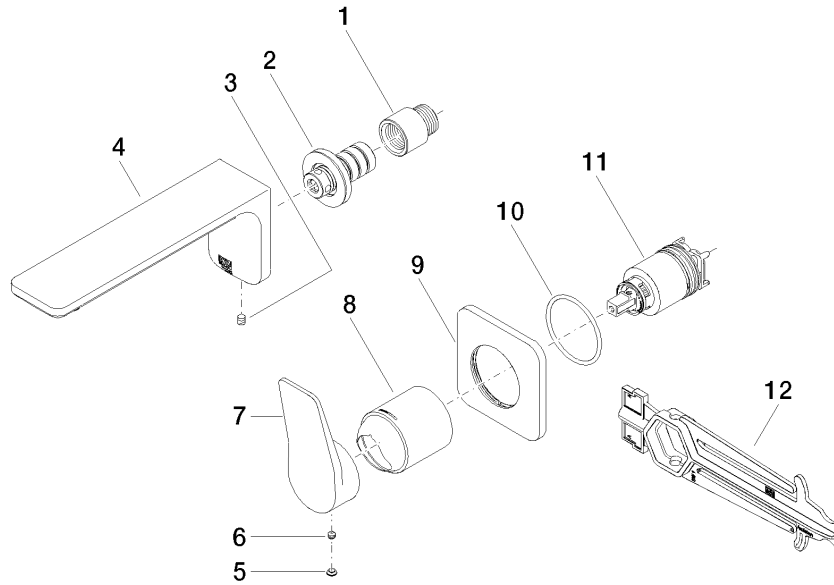
LISSE

36 860 845

Certificates

| | | | | |
|-----------------|-----------|------------|------------|--------------|
| IAPMO_4976 | WRAS_2107 | IAPMO_8834 | IAPMO_6397 | IAPMO_N-4976 |
| DVGW_DW-6512DN0 | LGA_29 | | | |

Product version from 4/1/2024





LISSE Wall-mounted single-lever basin mixer without pop-up waste - Chrome

LISSE

36 860 845

Spare parts list

Product version from 4/1/2024

| No. | Item Number | Name | Quantity used | Delivery time |
|-----|--------------------|--------|---------------|---------------|
| | 09 24 03 072 10 90 | nipple | 12 | 2 |