

LISSÉ Wall-mounted single-lever basin mixer without pop-up waste - Brushed Dark Platinum

LISSÉ

36 860 845 Product version from 4/1/2024



- 170mm projection
- fixed spout
- circular, air-enriched flow
- hole diameter spout 37 mm
- hole diameter single-lever mixer 57 mm
- rosette 78 x 78 mm
- max. flow 5.7 l/min
- lead-free
- This product can help a building meet the requirements of Green Building Rating Systems, e.g. LEED®, BREEAM®, DGNB
- WRAS

	Brushed Dark Platinum	36 860 845-99
	Chrome	36 860 845-00
	Brushed Platinum	36 860 845-06
	Dark Chrome	36 860 845-19
	Brushed Light Gold	36 860 845-27
	Matte Black	36 860 845-33
	Brushed Chrome	36 860 845-93

Required miscellaneous



Concealed wall-mounted single-lever mixer - 35 860 970 90

- min. recess depth 80 mm
- max. recess depth 95 mm
- mixer can be placed above, to the left or to the right of the spout.

Required miscellaneous



Concealed wall-mounted single-lever mixer mixer on right - 35 816 970 90

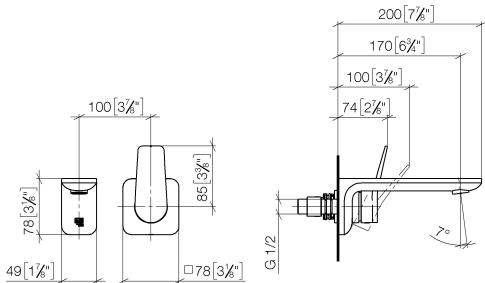
- NOTE: Not suitable for concealed installation. Connection by means of angle valves, mounted with screws to back wall.



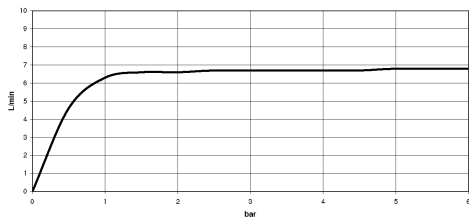
LISSE Wall-mounted single-lever basin mixer without pop-up waste - Brushed Dark Platinum

LISSE

36 860 845 Product version from 4/1/2024
mm [inches]



Flow rate chart



Codes & Standards

ASME A112.18.1	cUPC	EN 817	EPA WaterSense
NSF372	NSF61	Scottish Water Byelaws	UK Water Supply Regulations

WaterSense





LISSE Wall-mounted single-lever basin mixer without pop-up waste - Brushed Dark Platinum

LISSE

36 860 845 Product version from 4/1/2024

Certificates and sustainability

IAPMO_N-4976	DVGW_DW-6512DN0	IAPMO_6397	WRAS_2107	IAPMO_4976 (
IAPMO_8834				

LISSÉ Wall-mounted single-lever basin mixer without pop-up waste - Brushed Dark Platinum

LISSÉ

36 860 845 Product version from 4/1/2024

