







CYO Wall-mounted single-lever basin mixer without pop-up waste - Dark Chrome

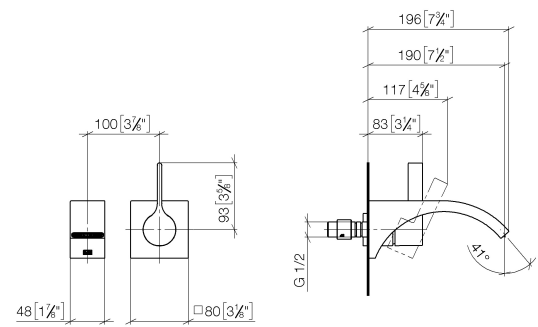
CYO

36 861 811			
	<ul style="list-style-type: none"> <li>• 190mm projection</li> <li>• fixed spout</li> <li>• rectangular, air-enriched flow</li> <li>• hole diameter spout 37 mm</li> <li>• hole diameter single-lever mixer 57 mm</li> <li>• rosette for mixer 80 x 80mm</li> <li>• max. flow 4.5 l/min</li> <li>• lead-free</li> <li>• This product can help a building meet the requirements of Green Building Rating Systems, e.g. LEED®, BREEAM®, DGNB</li> </ul>	<div>                      Dark Chrome                 </div> <div>                      Chrome                 </div> <div>                      Brushed Platinum                 </div> <div>                      Brushed Durabronze (23kt Gold)                 </div> <div>                      Brushed Dark Platinum                 </div>	<div>36 861 811-19</div> <div>36 861 811-00</div> <div>36 861 811-06</div> <div>36 861 811-28</div> <div>36 861 811-99</div>

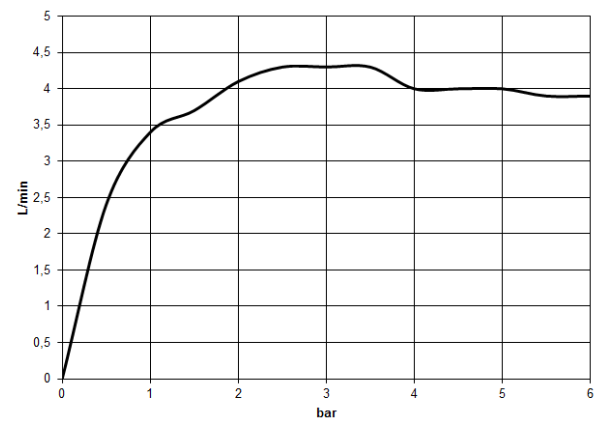
**CYO Wall-mounted single-lever basin mixer without pop-up waste - Dark Chrome**

CYO

36 861 811  
mm [inches]



Flow rate chart



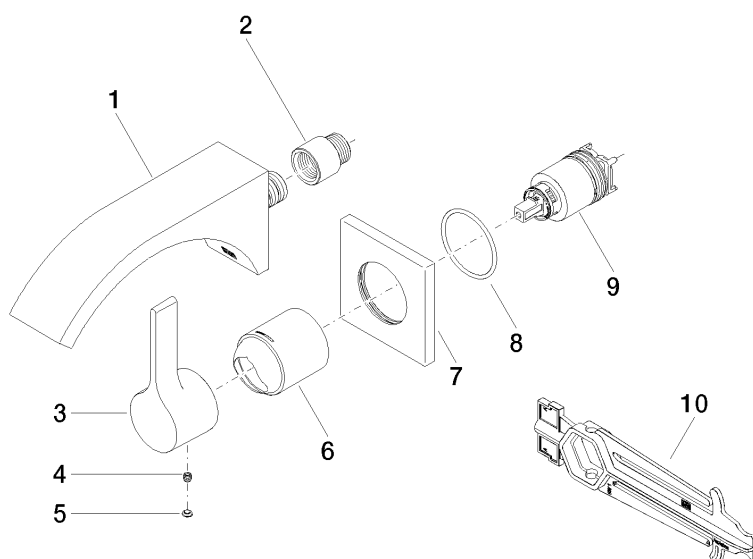
Certificates

IAPMO\_N-4976 (2). IAPMO\_6397 (2).

## CYO Wall-mounted single-lever basin mixer without pop-up waste - Dark Chrome

CYO

36 861 811  
Parts for other  
finishes can be found  
here: [Chrome](#)



### Spare parts list

No.	Item Number	Name	Quantity used	Delivery time
1	13 805 811-19	CYO Wall-mounted basin spout without pop-up waste - Dark Chrome	1	20
2	09 24 03 072 10 90	nipple	1	2
3	09 20 80 021-19	handle	1	60
4	90 31 11 030 00 90	pin	1	2
5	90 31 20 087 00-19	plug	1	20
6	09 11 02 288-19	cover	1	20
7	09 27 78 039-19	rosette	1	60
8	90 14 10 049 00 90	seal	1	2
9	90 15 05 064 01 90	cartridge	1	2
10	90 30 09 064 00 90	key	1	2