





DORNBRAUCHT YAMOU Wall-mounted single-lever basin mixer without pop-up waste - Soft Black

DORNBRAUCHT
YAMOU

36 861 831 Product version from 1/1/2023



- 200mm projection
- fixed spout
- circular, air-enriched flow
- hole diameter spout 37 mm
- hole diameter single-lever mixer 57 mm
- rosette for spout Ø 60mm
- max. flow 6.8 l/min
- rosette for mixer Ø 78mm
- WRAS

| | | |
|---|------------|---------------|
|  | Soft Black | 36 861 831-69 |
|  | Chrome | 36 861 831-00 |

Required miscellaneous

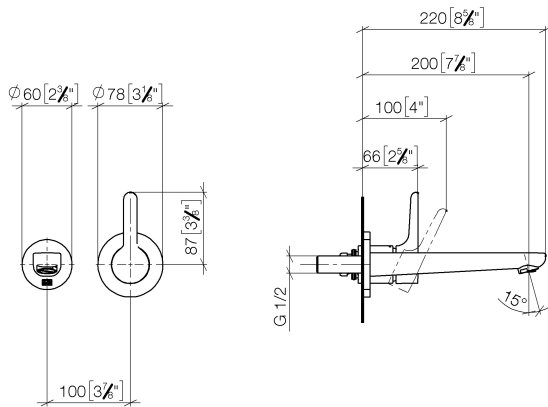


SERIES SPECIFIC Concealed wall-mounted single-lever mixer mixer on right - 35 870 970 90

DORNBRAUCHT YAMOU Wall-mounted single-lever basin mixer without pop-up waste - Soft Black

DORNBRAUCHT
YAMOU

36 861 831 Product version from 1/1/2023
mm [inches]



Flow rate chart



Codes & Standards

DIN 4109

EN 817

ISO 3822

Scottish Water
Byelaws

UK Water Supply
Regulations

Ü-Zeichen

XP P 41-280



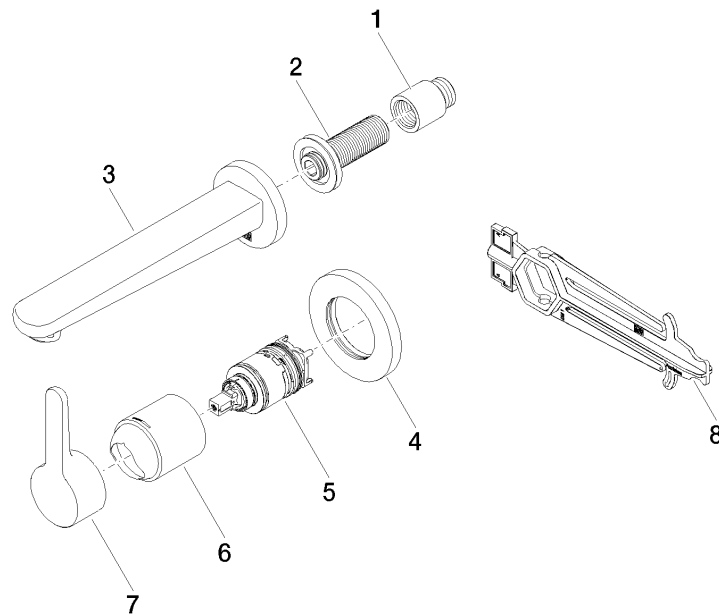
DORNBACHT YAMOU Wall-mounted single-lever basin mixer without pop-up waste - Soft Black

DORNBACHT
YAMOU

36 861 831 Product version from 1/1/2023

Certificates and sustainability

| | | | |
|--------|---------------|-------------|-----------------|
| AbP_10 | ACS_23 ACC NY | WRAS_240504 | DVGW_DW-6512DO0 |
|--------|---------------|-------------|-----------------|



Spare parts list

| No. | Item Number | Name | Quantity used | Delivery time |
|-----|--------------------|-----------|---------------|---------------|
| 2 | 90 24 03 316 00 90 | nipple | 1.00 | 2 |
| 1 | 09 24 03 080 90 | extension | 1.00 | 2 |
| 8 | 90 30 09 064 00 90 | key | 1.00 | 2 |
| 5 | 90 15 05 071 00 90 | cartridge | 1.00 | 2 |
| 3 | 90 11 06 221 01-69 | spout | 1.00 | 2 |
| 7 | 90 20 83 071 00-69 | handle | 1.00 | 2 |
| 6 | 90 11 02 393 00-69 | cover | 1.00 | 2 |
| 4 | 90 27 83 026 00-69 | rosette | 1.00 | 2 |