


META Wall-mounted single-lever basin mixer with individual rosettes - Brushed Chrome

META

36 862 660 Product version from 7/1/2023



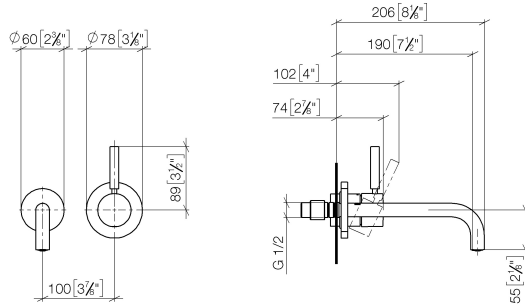
- 90° spout
- 190mm projection
- fixed spout
- circular, air-enriched flow
- hole diameter spout 37 mm
- hole diameter single-lever mixer 57 mm
- rosette for spout Ø 55mm
- rosette for mixer Ø 78mm
- max. flow 5.7 l/min
- lead-free
- This product can help a building meet the requirements of Green Building Rating Systems, e.g. LEED®, BREEAM®, DGNB
- WRAS

	Brushed Chrome	36 862 660-93
	Chrome	36 862 660-00
	Brushed Platinum	36 862 660-06
	Dark Chrome	36 862 660-19
	Light Gold	36 862 660-26
	Brushed Light Gold	36 862 660-27
	Matte Black	36 862 660-33
	Brushed Dark Brass	36 862 660-39
	Brushed Bronze	36 862 660-42
	Brushed Champagne (22kt Gold)	36 862 660-46
	Champagne (22kt Gold)	36 862 660-47
	Brushed Dark Platinum	36 862 660-99

META Wall-mounted single-lever basin mixer with individual rosettes - Brushed Chrome

META

36 862 660 Product version from 7/1/2023
mm [inches]



Flow rate chart



Codes & Standards

DIN 4109

ISO 3822

Scottish Water
Byelaws

UK Water Supply
Regulations

Ü-Zeichen



META Wall-mounted single-lever basin mixer with individual rosettes - Brushed Chrome

META

36 862 660 Product version from 7/1/2023

Certificates and sustainability

WRAS_2107

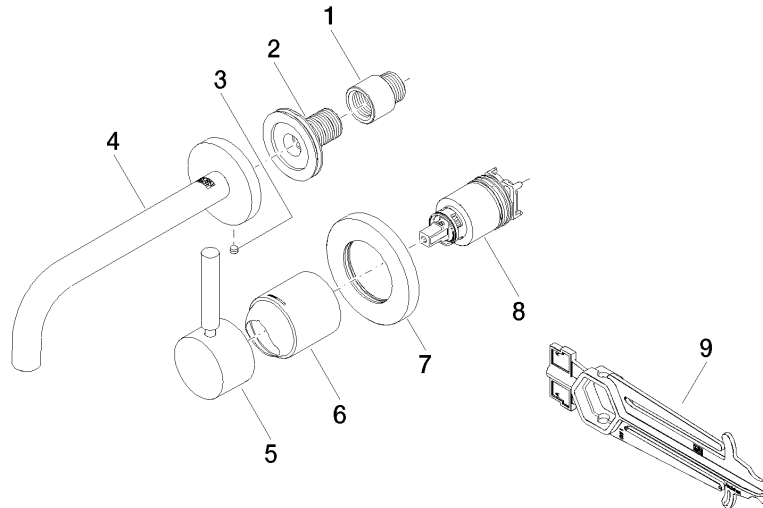
LGA_29

META Wall-mounted single-lever basin mixer with individual rosettes - Brushed Chrome

META

36 862 660 Product version from 7/1/2023

Parts for other
finishes can be found
here: [Chrome](#)



Spare parts list

No.	Item Number	Name	Quantity used	Delivery time
7	90 27 62 011 00-93	rosette	1.00	20
1	09 24 03 072 10 90	nipple	1.00	2
5	90 20 66 007 00-93	handle	1.00	20
4	90 28 22 351 00-93	spout	1.00	20
3	09 31 11 112 90	pin	1.00	60
2	90 24 03 280 00 90	nipple	1.00	2
8	90 15 05 064 01 90	cartridge	1.00	2
6	09 11 02 288-93	cover	1.00	20
9	90 30 09 064 00 90	key	1.00	2