

MEM Wall-mounted single-lever basin mixer with cover plate without pop-up waste - Champagne (22kt Gold)

MEM

36 863 782



- 177mm projection
- fixed spout
- rectangular, air-enriched flow
- hole diameter spout 37 mm
- hole diameter single-lever mixer 57 mm
- cover plate 80 x 180 mm
- max. flow 5.7 l/min
- lead-free
- This product can help a building meet the requirements of Green Building Rating Systems, e.g. LEED®, BREEAM®, DGNB
- WRAS 2107018

| | | |
|--|--------------------------------|---------------|
| | Champagne (22kt Gold) | 36 863 782-47 |
| | Chrome | 36 863 782-00 |
| | Brushed Platinum | 36 863 782-06 |
| | Platinum | 36 863 782-08 |
| | Dark Chrome | 36 863 782-19 |
| | Brushed Durabronze (23kt Gold) | 36 863 782-28 |
| | Brushed Champagne (22kt Gold) | 36 863 782-46 |
| | Brushed Dark Platinum | 36 863 782-99 |

Required miscellaneous



Concealed wall-mounted single-lever mixer on right - 35 816 970 90
 •NOTE: Not suitable for concealed installation. Connection by means of angle valves, mounted with screws to back wall.

Required miscellaneous

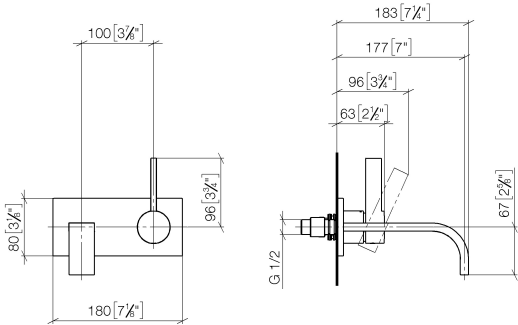


Concealed wall-mounted single-lever mixer - 35 860 970 90
 •max. recess depth 95 mm
 •min. recess depth 80 mm

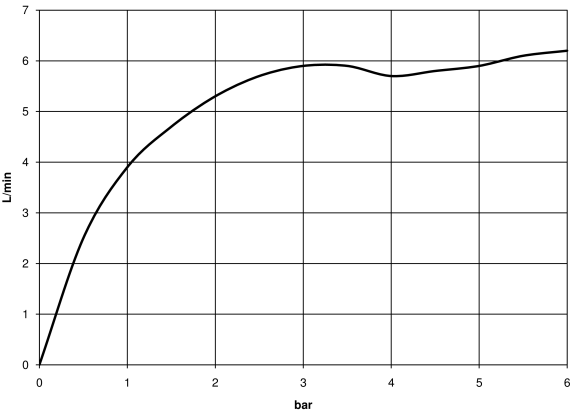
MEM Wall-mounted single-lever basin mixer with cover plate without pop-up waste - Champagne (22kt Gold)

MEM

36 863 782
mm [inches]



Flow rate chart



Codes & Standards

| | | |
|--------|------------------------|-----------------------------|
| EN 817 | Scottish Water Byelaws | UK Water Supply Regulations |
|--------|------------------------|-----------------------------|



MEM Wall-mounted single-lever basin mixer with cover plate without pop-up waste - Champagne (22kt Gold)

MEM

36 863 782

Certificates

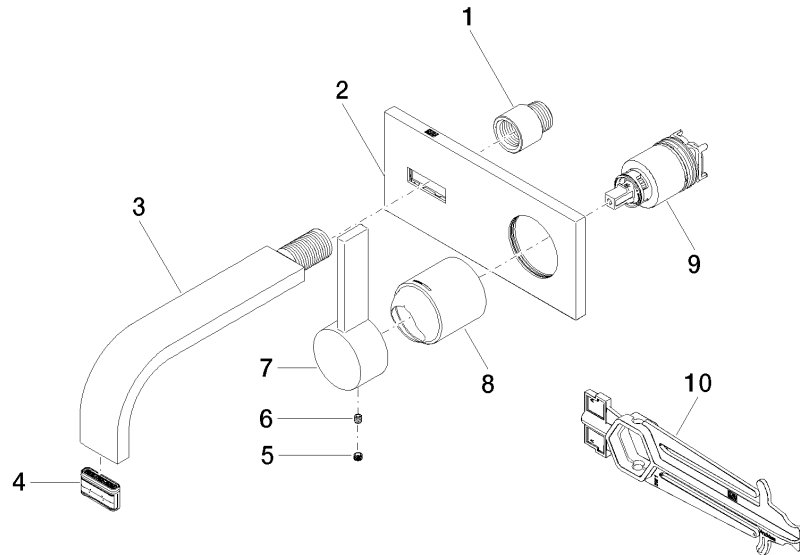
WRAS_2107

DVGW_DW-
6512DN0

**MEM Wall-mounted single-lever basin mixer with cover plate without pop-up
waste - Champagne (22kt Gold)**

MEM

36 863 782





MEM Wall-mounted single-lever basin mixer with cover plate without pop-up waste - Champagne (22kt Gold)

MEM

36 863 782

Spare parts list

| No. | Item Number | Name | Quantity used | Delivery time |
|-----|--------------------|--------|---------------|---------------|
| | 09 24 03 072 10 90 | nipple | 10 | 2 |