

## MEM Wall-mounted single-lever basin mixer with cover plate without pop-up waste - Brushed Dark Platinum

MEM

36 864 782



- 207mm projection
- fixed spout
- rectangular, air-enriched flow
- hole diameter spout 37 mm
- hole diameter single-lever mixer 57 mm
- cover plate 80 x 180 mm
- max. flow 5.7 l/min
- lead-free
- This product can help a building meet the requirements of Green Building Rating Systems, e.g. LEED®, BREEAM®, DGNB
- WRAS

|  |                                |               |
|--|--------------------------------|---------------|
|  | Brushed Dark Platinum          | 36 864 782-99 |
|  | Chrome                         | 36 864 782-00 |
|  | Brushed Platinum               | 36 864 782-06 |
|  | Platinum                       | 36 864 782-08 |
|  | Dark Chrome                    | 36 864 782-19 |
|  | Brushed Durabronze (23kt Gold) | 36 864 782-28 |
|  | Brushed Champagne (22kt Gold)  | 36 864 782-46 |
|  | Champagne (22kt Gold)          | 36 864 782-47 |

### Required miscellaneous



- Concealed wall-mounted single-lever mixer -** 35 860 970 90
- max. recess depth 95 mm
  - min. recess depth 80 mm
  - mixer can be placed above, to the left or to the right of the spout.

### Required miscellaneous

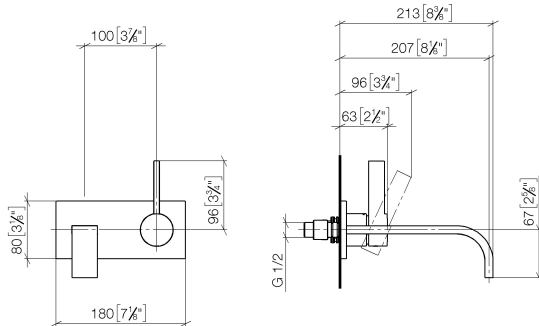


- Concealed wall-mounted single-lever mixer mixer on right -** 35 816 970 90
- NOTE: Not suitable for concealed installation. Connection by means of angle valves, mounted with screws to back wall.

# MEM Wall-mounted single-lever basin mixer with cover plate without pop-up waste - Brushed Dark Platinum

MEM

36 864 782  
mm [inches]



## Flow rate chart



## Codes & Standards

DIN 4109

EN 817

ISO 3822

Scottish Water  
Byelaws

UK Water Supply  
Regulations

Ü-Zeichen



MEM Wall-mounted single-lever basin mixer with cover plate without pop-up waste - Brushed Dark Platinum

MEM

36 864 782

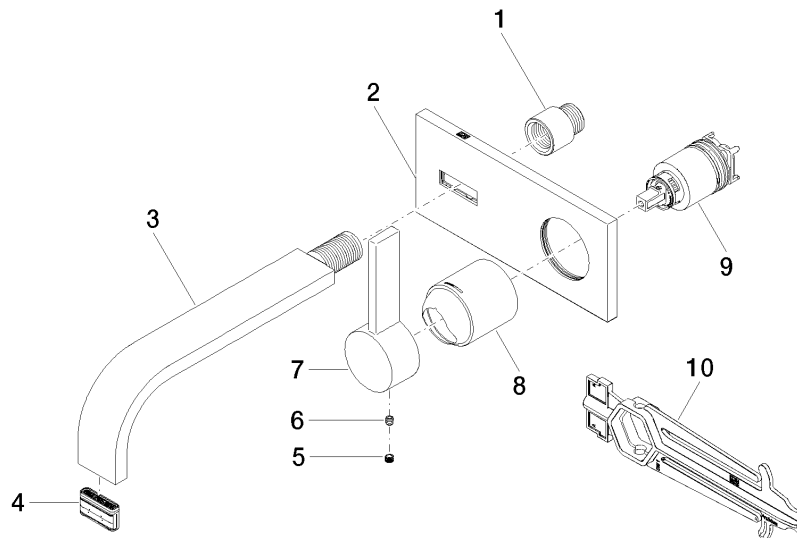
Certificates and sustainability

|        |                 |           |
|--------|-----------------|-----------|
| LGA_29 | DVGW_DW-6512DN0 | WRAS_2107 |
|--------|-----------------|-----------|

**MEM Wall-mounted single-lever basin mixer with cover plate without pop-up waste - Brushed Dark Platinum**

MEM

36 864 782



**Spare parts list**

| No. | Item Number           | Name      | Quantity used | Delivery time |
|-----|-----------------------|-----------|---------------|---------------|
|     | 2 90 11 01 186 00-99  | plate     | 1.00          | 20            |
|     | 9 90 15 05 064 01 90  | cartridge | 1.00          | 2             |
|     | 1 09 24 03 072 10 90  | nipple    | 1.00          | 2             |
|     | 4 90 29 03 109 00 90  | aerator   | 1.00          | 2             |
|     | 8 09 11 02 288-99     | cover     | 1.00          | 20            |
|     | 7 09 20 78 058-99     | handle    | 1.00          | 20            |
|     | 3 04 28 22 149 10-99  | spout     | 1.00          | 20            |
|     | 6 90 31 11 030 00 90  | pin       | 1.00          | 2             |
|     | 5 90 31 20 109 00 90  | plug      | 1.00          | 2             |
|     | 10 90 30 09 064 00 90 | key       | 1.00          | 2             |