

## VAIA Wall-mounted single-lever basin mixer without pop-up waste - Brushed Dark Brass

VAIA

36 867 809 Product version from 4/1/2025



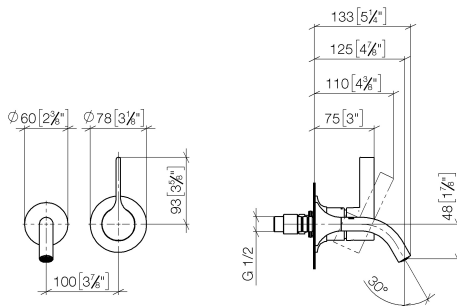
- 125mm projection
- fixed spout
- circular, air-enriched flow
- hole diameter spout 35 mm
- hole diameter single-lever mixer 57 mm
- rosette for single-lever mixer Ø 78mm
- rosette for spout Ø 60mm
- max. flow 5.7 l/min
- lead-free
- This product can help a building meet the requirements of Green Building Rating Systems, e.g. LEED®, BREEAM®, DGNB
- WRAS

	Brushed Dark Brass	36 867 809-39
	Chrome	36 867 809-00
	Brushed Platinum	36 867 809-06
	Platinum	36 867 809-08
	Dark Chrome	36 867 809-19
	Brushed Durabronze (23kt Gold)	36 867 809-28
	Brushed Bronze	36 867 809-42
	Brushed Champagne (22kt Gold)	36 867 809-46
	Champagne (22kt Gold)	36 867 809-47
	Brushed Dark Platinum	36 867 809-99

## VAIA Wall-mounted single-lever basin mixer without pop-up waste - Brushed Dark Brass

VAIA

36 867 809 Product version from 4/1/2025  
mm [inches]



### Flow rate chart



### Codes & Standards

DIN 4109

ISO 3822

Scottish Water  
Byelaws

UK Water Supply  
Regulations

Ü-Zeichen



## VAIA Wall-mounted single-lever basin mixer without pop-up waste - Brushed Dark Brass

VAIA

---

36 867 809 Product version from 4/1/2025

Certificates and sustainability

---

WRAS\_2107

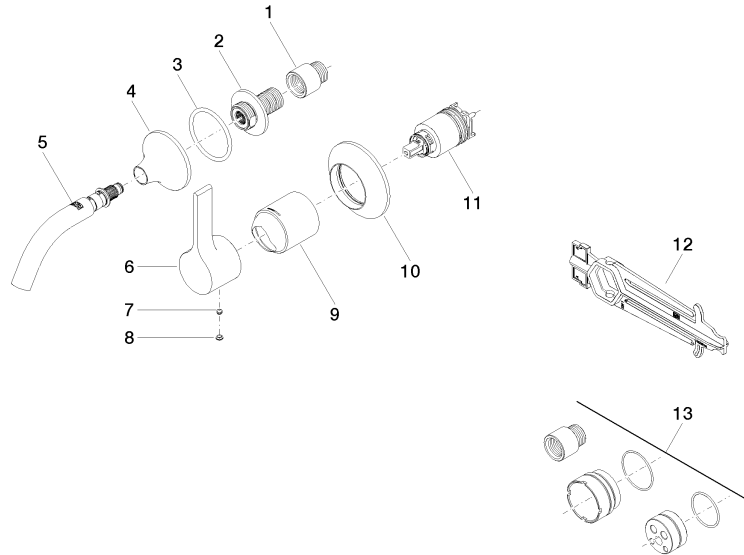
LGA\_38

## VAIA Wall-mounted single-lever basin mixer without pop-up waste - Brushed Dark Brass

VAIA

36 867 809 Product version from 4/1/2025

Parts for other  
finishes can be found  
here: [Chrome](#)



### Spare parts list

No.	Item Number	Name	Quantity used	Delivery time
	5 90 28 22 365 00-39	spout	1.00	30
	7 90 31 11 063 00 90	pin	1.00	2
	3 09 14 10 084 90	seal	1.00	2
	4 09 27 80 011-39	rosette	1.00	60
	1 09 24 03 072 10 90	nipple	1.00	2
	10 90 27 80 012 00-39	rosette	1.00	30
	13 12 869 970 90	Extension 20 mm -	1.00	2
	9 09 11 02 288-39	cover	1.00	60
	11 90 15 05 064 01 90	cartridge	1.00	2
	8 90 31 20 087 00-39	plug	1.00	30
	2 09 24 03 269 90	nipple	1.00	2
	12 90 30 09 064 00 90	key	1.00	2
	6 09 20 80 021-39	handle	1.00	60