

## VAIA Wall-mounted single-lever basin mixer without pop-up waste - Brushed Bronze

VAIA

36 867 809



- 125mm projection
- fixed spout
- circular, air-enriched flow
- hole diameter spout 35 mm
- hole diameter single-lever mixer 57 mm
- rosette for single-lever mixer Ø 78mm
- rosette for spout Ø 60mm
- max. flow 5.7 l/min
- lead-free
- This product can help a building meet the requirements of Green Building Rating Systems, e.g. LEED®, BREEAM®, DGNB
- WRAS

	Brushed Bronze	36 867 809-42
	Chrome	36 867 809-00
	Brushed Platinum	36 867 809-06
	Platinum	36 867 809-08
	Dark Chrome	36 867 809-19
	Brushed Durabronze (23kt Gold)	36 867 809-28
	Brushed Champagne (22kt Gold)	36 867 809-46
	Champagne (22kt Gold)	36 867 809-47
	Brushed Dark Platinum	36 867 809-99

### Required miscellaneous



**Concealed wall-mounted single-lever mixer on right -** 35 816 970 90

- NOTE: Not suitable for concealed installation. Connection by means of angle valves, mounted with screws to back wall.

### Required miscellaneous



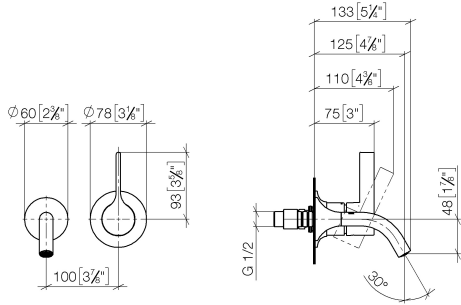
**Concealed wall-mounted single-lever mixer -** 35 860 970 90

- min. recess depth 80 mm
- max. recess depth 95 mm
- mixer can be placed above, to the left or to the right of the spout.

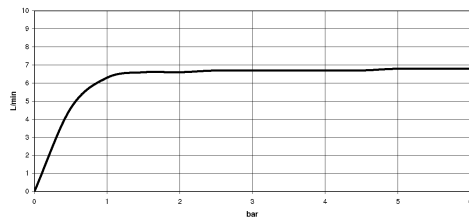
**VAIA Wall-mounted single-lever basin mixer without pop-up waste - Brushed Bronze**

VAIA

36 867 809  
mm [inches]



**Flow rate chart**



**Codes & Standards**

DIN 4109

ISO 3822

Scottish Water  
Byelaws

UK Water Supply  
Regulations

**Ü-Zeichen**



## VAIA Wall-mounted single-lever basin mixer without pop-up waste - Brushed Bronze

---

VAIA

36 867 809

Certificates and sustainability

---

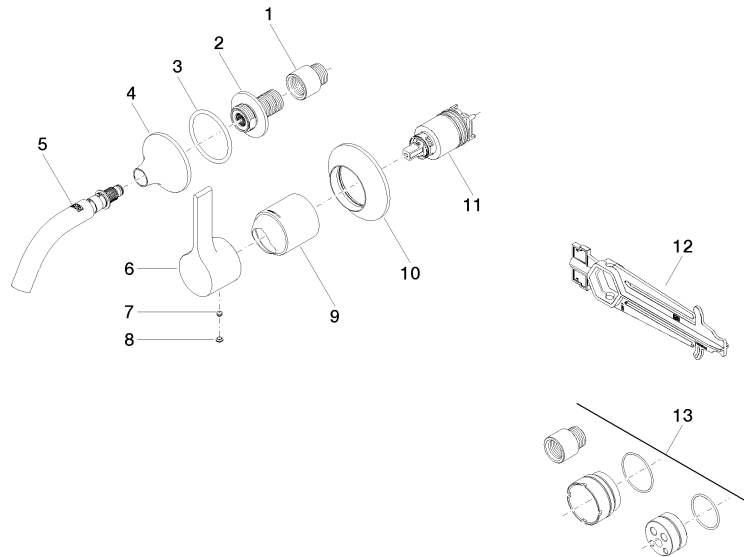
WRAS\_2107

LGA\_38

## VAIA Wall-mounted single-lever basin mixer without pop-up waste - Brushed Bronze

VAIA

36 867 809



### Spare parts list

No.	Item Number	Name	Quantity used	Delivery time
2	09 24 03 269 90	nipple	1.00	2
8	90 31 20 087 00-42	plug	1.00	30
1	09 24 03 072 10 90	nipple	1.00	2
3	09 14 10 084 90	seal	1.00	2
7	90 31 11 063 00 90	pin	1.00	2
5	90 28 22 365 00-42	spout	1.00	30
6	09 20 80 021-42	handle	1.00	60
4	09 27 80 011-42	rosette	1.00	60
12	90 30 09 064 00 90	key	1.00	2
10	90 27 80 012 00-42	rosette	1.00	30
9	09 11 02 288-42	cover	1.00	60
11	90 15 05 064 01 90	cartridge	1.00	2
13	12 869 970 90	Extension 20 mm -	1.00	2