

SERENITY SKY Rain panel for recessed ceiling installation with light - Brushed Dark Platinum **SERIES-VARIOUS**

41 771 979 Product version from 9/1/2024



- exposed trim parts
- Rain panel with 2 different spray modes
- PURIFY RAIN, 175 x 175 mm, max. flow rate 10 l/min (at 3 bar)
- FULL RAIN, 455 x 315 mm, max. flow rate 14 l/min (at 3 bar)
- with anti-scale system

Technical data:

- Rain panel, 600 x 420 mm
- min. recess depth 150 mm
- weight 15kg
- Recommended control element: xTool

Electric:

Ceiling module power supply

- 24V DC (CV)

Ambient lighting

- LED coloured light RGBW
- Bulbs protected against splashing water

Activation

- ZigBee Light Link RGBW controller
- Provided by customer: Zigbee gateway

Environment

technical data:








- Not suitable for outdoor use.
- Not suitable for use in a steam room.
- Not suitable for use in chlorinated or salty environments.
- Comply with the protection zone regulations as defined in DIN VDE 0100, Part 701 (IEC 60364-7-701).

Sanitary:

- recommended water hardness: 6-7 °dH - if the water is harder, integrate a water softener that uses the ion exchange principle into the feed pipe.
- for choosing the drainage, taking into consideration the discharge of all the products in the shower, the specific demand needs to be assessed.
Recommendation: Floor drain (connected rating) = 1l/sec, drainage rate DN 50
- feed pipe (hot/cold): 2x DN 20
- For the optimum choice of hot water storage device - taking into consideration additional drawing-off points and the frequency with which the rain panels are used - the specific demand needs to be assessed

Notes:

- Dornbracht recommends consulting a systems integrator.

	Brushed Dark Platinum	41 771 979-99
	Chrome	41 771 979-00
	Dark Chrome	41 771 979-19
	Brushed Bronze	41 771 979-42
	Brushed Champagne (22kt Gold)	41 771 979-46
	Champagne (22kt Gold)	41 771 979-47
	Brushed Stainless Steel	41 771 979-86

SERENITY SKY Rain panel for recessed ceiling installation with light - Brushed Dark Platinum SERIES-VARIOUS

41 771 979 Product version from 9/1/2024

Required miscellaneous



SERENITY SKY Concealed ceiling installation box with light - 35 771 970 90

installation box with light -

- concealed rough parts
- flush-mounted reflection box, 662 x 482 mm, RAL 9003, Signal White
- 2x female thread 1/2" connections
- min. recess depth 150 mm
- weight 15kg
- Supply pipe 7 m
- Input 100-240V AC 50-60Hz
- Output 24V DC SELV / Class 2
- ZigBee Light Link RGBW controller
- Provided by customer: Zigbee gateway

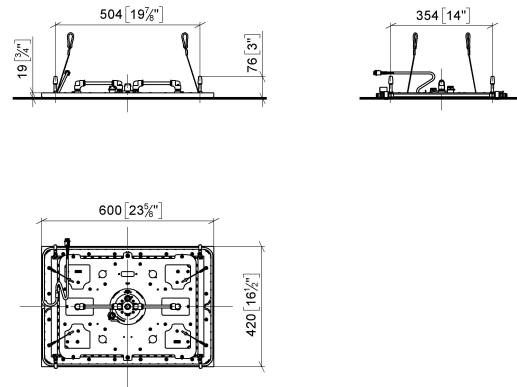
SERENITY SKY Rain panel for recessed ceiling installation with light - Brushed Dark Platinum
SERIES-VARIOUS

41 771 979

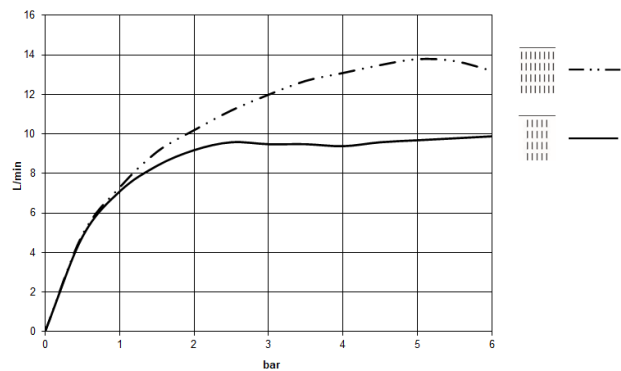
Product version from 9/1/2024

mm [inches]

1:10



Flow rate chart



Codes & Standards

DIN 4109	ISO 3822	Scottish Water Byelaws	UK Water Supply Regulations
----------	----------	------------------------	-----------------------------

Ü-Zeichen



SERENITY SKY Rain panel for recessed ceiling installation with light - Brushed Dark Platinum SERIES-VARIOUS

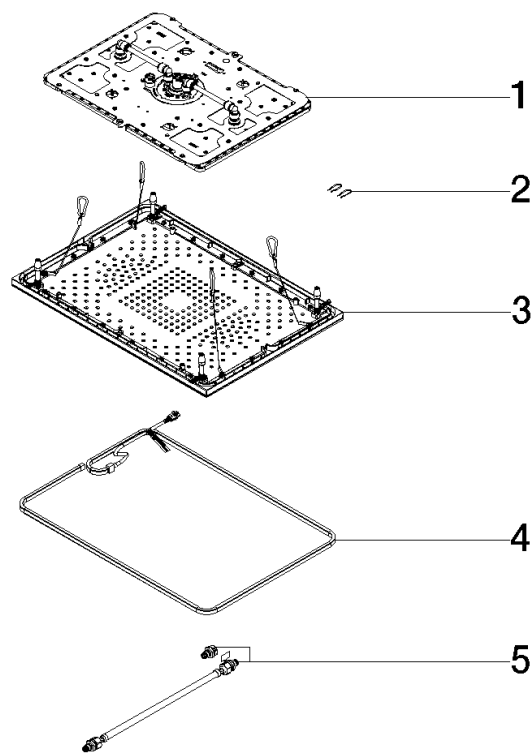
41 771 979 Product version from 9/1/2024

Certificates and sustainability

LGA_38 WRAS_250102

SERENITY SKY Rain panel for recessed ceiling installation with light - Brushed
SERIES-VARIOUS
Dark Platinum

41 771 979
Product version from 9/1/2024



Spare parts list

No.	Item Number	Name	Quantity used	Delivery time
3	90 12 05 106 00-99	cover	1.00	20
4	90 10 01 263 00 90	electronic accessories	1.00	2
5	90 30 04 033 00 90	hose	1.00	2
2	91 16 02 053 00 90	holder	1.00	2
1	90 12 01 095 02 90	shower	1.00	2