

Hooks in two parts - Brushed Bronze

SERIES SPECIFIC

83 256 979

Product version from 11/1/2004



- width 80mm
- rosette Ø 40 mm
- 55mm projection

Fits ELIO, ENO, MEM, META SQUARE, SYNC and TARA ULTRA

|                                                                                     |                               |               |
|-------------------------------------------------------------------------------------|-------------------------------|---------------|
|    | Brushed Bronze                | 83 256 979-42 |
|    | Chrome                        | 83 256 979-00 |
|    | Brushed Platinum              | 83 256 979-06 |
|    | Dark Chrome                   | 83 256 979-19 |
|    | Brushed Durabrass (23kt Gold) | 83 256 979-28 |
|    | Matte Black                   | 83 256 979-33 |
|    | Brushed Dark Brass            | 83 256 979-39 |
|    | Brushed Champagne (22kt Gold) | 83 256 979-46 |
|    | Champagne (22kt Gold)         | 83 256 979-47 |
|   | Brushed Chrome                | 83 256 979-93 |
|  | Brushed Dark Platinum         | 83 256 979-99 |

## Hooks in two parts - Brushed Bronze

SERIES SPECIFIC

83 256 979 Product version from 11/1/2004

mm [inches]

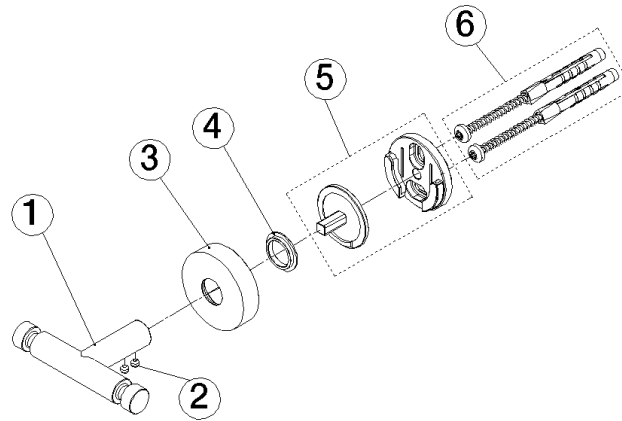


## Hooks in two parts - Brushed Bronze

SERIES SPECIFIC

83 256 979 Product version from 11/1/2004

Parts for other  
finishes can be found  
here: [Chrome](#)



## Spare parts list

| No. | Item Number        | Name       | Quantity used | Delivery time |
|-----|--------------------|------------|---------------|---------------|
| 4   | 08 30 11 516 90    | ring       | 1.00          | 2             |
| 1   | 05 18 60 519 01-42 | hook       | 1.00          | 60            |
| 6   | 05 30 31 025 00 90 | fixing set | 1.00          | 2             |
| 2   | 90 31 11 038 00 90 | pin        | 2.00          | 2             |
| 3   | 08 27 97 500-42    | rosette    | 1.00          | 60            |
| 5   | 05 17 97 501 01 90 | holder     | 1.00          | 2             |