




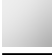




Towel warmer , 4-fold , projection left , without control element - Brushed Dark Platinum

SERIES SPECIFIC

83 304 979    Product version from 4/1/2025



- gauge 120 mm
  - width 610mm
  - height 440 mm
  - rosette Ø 80 mm
  - Projection: 67 mm
  - Degree of protection IP 44, CE marking
  - Output per towel bar: 15 watts
  - Rated voltage: 220 - 240 V AC
- Without control element**
- Activation must be handled by the customer**
- Note: Different conditioning.**
- Without control element
- Activation must be handled by the customer
- Note: Different conditioning.

|                                                                                   |                               |               |
|-----------------------------------------------------------------------------------|-------------------------------|---------------|
|  | Brushed Dark Platinum         | 83 304 979-99 |
|  | Chrome                        | 83 304 979-00 |
|  | Dark Chrome                   | 83 304 979-19 |
|  | Matte Black                   | 83 304 979-33 |
|  | Brushed Champagne (22kt Gold) | 83 304 979-46 |
|  | Brushed Chrome                | 83 304 979-93 |

Required miscellaneous



- Concealed wall installation box for 35 311 970 90 towel warmer , 4-fold , without control element -**
- min. recess depth 70 mm
  - max. recess depth 105 mm

# Towel warmer , 4-fold , projection left , without control element - Brushed Dark Platinum

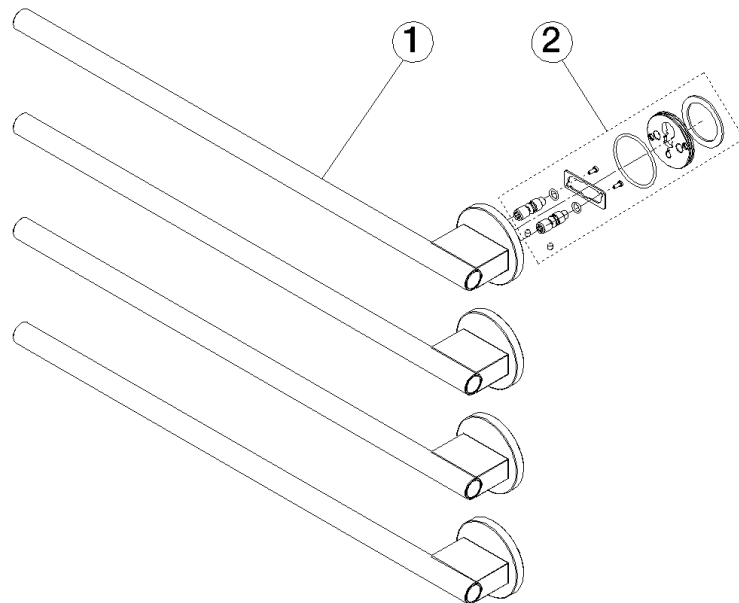
SERIES SPECIFIC

83 304 979 Product version from 4/1/2025  
mm [inches]



Towel warmer , 4-fold , projection left , without control element - Brushed Dark      SERIES SPECIFIC  
Platinum

83 304 979    Product version from 4/1/2025



Spare parts list

| No.                                                                    | Item Number        | Name       | Quantity used | Delivery time |
|------------------------------------------------------------------------|--------------------|------------|---------------|---------------|
| 1                                                                      | 90 17 97 102 00-99 | holder     | 1.00          | -             |
| Spare part can no longer be ordered, please order the replacement item |                    |            |               |               |
| 2                                                                      | 90 30 30 252 00 90 | fixing set | 1.00          | -             |
| Spare part can no longer be ordered, please order the replacement item |                    |            |               |               |