









Towel warmer , 6-fold , projection left , without control element - Brushed Dark Platinum
SERIES SPECIFIC

83 306 979	Product version from 4/1/2025		
	<ul style="list-style-type: none"> gauge 120 mm width 610mm height 680 mm rosette Ø 80 mm Projection: 67 mm Degree of protection IP 44, CE marking Output per towel bar: 15 watts Rated voltage: 220 - 240 V AC <p>Without control element</p> <p>Activation must be handled by the customer</p> <p>Note: Different conditioning.</p> <p>This appliance is a stationary electric space heater and, in order to comply with the mandatory ecodesign requirements of Commission Regulation (EU) 2024/1103, must be equipped with at least one control with control function TW(f2).</p> <p>Without control element</p> <p>Activation must be handled by the customer</p> <p>Note: Different conditioning.</p> <p>This appliance is a stationary electric space heater and, in order to comply with the mandatory ecodesign requirements of Commission Regulation (EU) 2024/1103, must be equipped with at least one control with control function TW(f2).</p>	<div>  Brushed Dark Platinum 83 306 979-99 </div> <div>  Chrome 83 306 979-00 </div> <div>  Dark Chrome 83 306 979-19 </div> <div>  Matte Black 83 306 979-33 </div> <div>  Brushed Champagne (22kt Gold) 83 306 979-46 </div> <div>  Brushed Chrome 83 306 979-93 </div>	

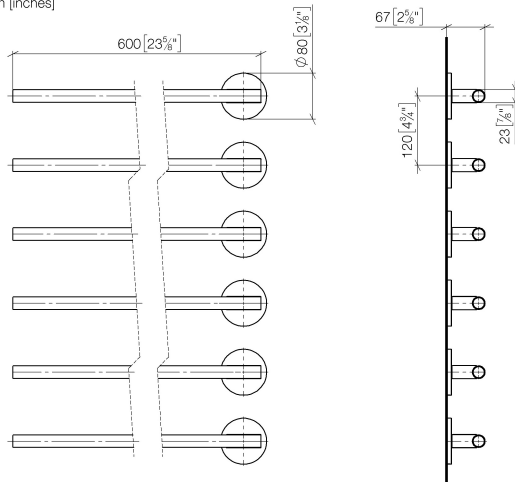
Required miscellaneous

	<p>Concealed wall installation box for towel warmer , 6-fold , without control element -</p> <ul style="list-style-type: none"> min. recess depth 70 mm max. recess depth 105 mm 	35 313 970 90
---	---	---------------

Towel warmer , 6-fold , projection left , without control element - Brushed Dark Platinum

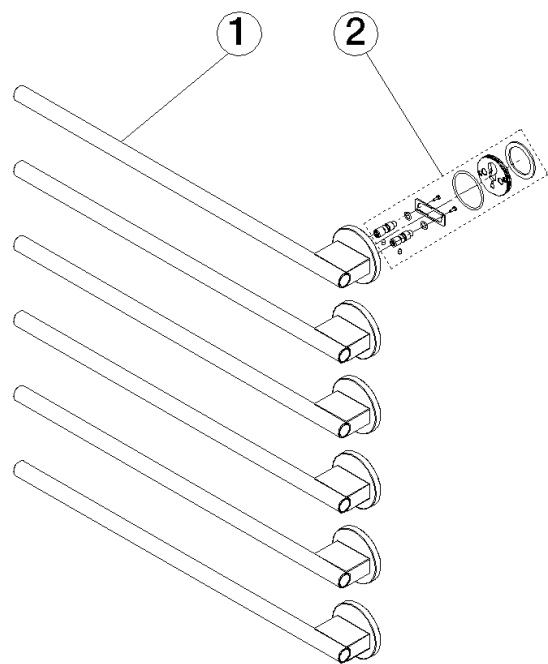
SERIES SPECIFIC

83 306 979 Product version from 4/1/2025
mm [inches]



Towel warmer , 6-fold , projection left , without control element - Brushed Dark
SERIES SPECIFIC
Platinum

83 306 979
Product version from 4/1/2025



Spare parts list

No.	Item Number	Name	Quantity used	Delivery time
2	90 30 30 252 00 90	fixing set	1.00	2
1	90 17 97 102 00-99	holder	1.00	50