

TARA Tissue holder with cover - Brushed Dark Brass

TARA

83 510 892    Product version from 4/1/2024



- width 152mm
- height 100 mm
- rosette Ø 55 mm
- 77mm projection

|   |                                |               |
|---|--------------------------------|---------------|
|    | Brushed Dark Brass             | 83 510 892-39 |
|    | Chrome                         | 83 510 892-00 |
|    | Brushed Platinum               | 83 510 892-06 |
|    | Platinum                       | 83 510 892-08 |
|    | Dark Chrome                    | 83 510 892-19 |
|    | Brushed Durabronze (23kt Gold) | 83 510 892-28 |
|    | Matte Black                    | 83 510 892-33 |
|    | Brushed Bronze                 | 83 510 892-42 |
|    | Brushed Champagne (22kt Gold)  | 83 510 892-46 |
|  | Champagne (22kt Gold)          | 83 510 892-47 |
|  | Brushed Chrome                 | 83 510 892-93 |
|  | Brushed Dark Platinum          | 83 510 892-99 |

83 510 892 Product version from 4/1/2024

mm [inches]

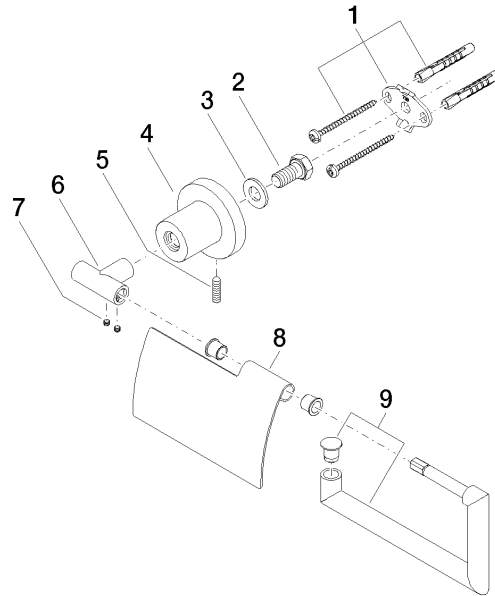


## TARA Tissue holder with cover - Brushed Dark Brass

TARA

83 510 892 Product version from 4/1/2024

Parts for other  
finishes can be found  
here: [Chrome](#)



### Spare parts list

| No. | Item Number        | Name       | Quantity used | Delivery time |
|-----|--------------------|------------|---------------|---------------|
| 1   | 05 17 20 739 00 90 | fixing set | 1.00          | 2             |
| 3   | 09 30 11 046 90    | disc       | 1.00          | 2             |
| 5   | 04 31 11 113 00 90 | pin        | 1.00          | 2             |
| 6   | 05 17 89 553 00-39 | holder     | 1.00          | 60            |
| 7   | 90 31 11 038 00 90 | pin        | 2.00          | 2             |
| 4   | 08 17 89 505-39    | holder     | 1.00          | 60            |
| 8   | 08 11 02 514-39    | lid        | 1.00          | 60            |
| 9   | 90 28 22 641 00-39 | holder     | 1.00          | 30            |
| 2   | 09 30 30 071 90    | screw      | 1.00          | 2             |