

TARA Showerpipe 220 mm - Brushed Platinum

TARA

ST 050 303 4892



- shower with fixed riser projection 420mm
- Rain shower: PURE RAIN, max. flow rate 7 l/min (at 3 bar)
- rain shower Ø 220 mm
- rain shower with anti-scale system
- Hand shower: COMPACT RAIN, max. flow rate 15 l/min (at 3 bar)
- spray head Ø 100mm
- rotary diverter for fixed-riser shower/hand shower
- height of fittings up to rain shower (bottom edge) 1007mm
- height of fittings up to top edge of elbow 1167mm
- rosette for shower holder Ø 55mm
- rosette for wall mounting Ø 57mm
- rosette for shower mixer Ø 65mm
- gauge 150 mm - 13 mm
- 1500 mm metal shower hose
- 1/2" connection
- Pipe diameter 20 mm

	Brushed Platinum	ST 050 303 4892-06
	Chrome	ST 050 303 4892-00
	Platinum	ST 050 303 4892-08
	Dark Chrome	ST 050 303 4892-19
	Brushed Light Gold	ST 050 303 4892-27
	Brushed Durabronze (23kt Gold)	ST 050 303 4892-28
	Matte Black	ST 050 303 4892-33
	Brushed Bronze	ST 050 303 4892-42
	Brushed Champagne (22kt Gold)	ST 050 303 4892-46
	Champagne (22kt Gold)	ST 050 303 4892-47
	Brushed Chrome	ST 050 303 4892-93
	Brushed Dark Platinum	ST 050 303 4892-99

Individual components of this set

You need the following components for this set



1x 26 633 892-06



1x 28 018 979-06

# TARA Showerpipe 220 mm - Brushed Platinum

TARA

ST 050 303 4892



- shower with fixed riser projection 420mm
- overhead shower: rain flow
- rain shower Ø 220 mm
- rain shower with anti-scale system
- max. rainshower flow 7 l/min
- rotary diverter for fixed-riser shower/hand shower
- height of fittings up to rain shower (bottom edge) 1007mm
- height of fittings up to top edge of elbow 1167mm
- rosette for shower holder Ø 55mm
- rosette for wall mounting Ø 57mm
- rosette for shower mixer Ø 65mm
- gauge 150 mm - 13 mm
- 1500 mm metal shower hose
- 1/2" connection
- Pipe diameter 20 mm
- quick clearing
- This product can help a building meet the requirements of Green Building Rating Systems, e.g. LEED®, BREEAM®, DGNB
- WRAS 2204012

This article does not include a hand shower!

Intrinsic protection against back flow.

	Brushed Platinum	26 633 892-0
	Chrome	26 633 892-0
	Platinum	26 633 892-0
	Dark Chrome	26 633 892-1
	Brushed Durabronze (23kt Gold)	26 633 892-2
	Matte Black	26 633 892-3
	Brushed Bronze	26 633 892-4
	Brushed Champagne (22kt Gold)	26 633 892-4
	Champagne (22kt Gold)	26 633 892-4
	Brushed Chrome	26 633 892-9
	Brushed Dark Platinum	26 633 892-9

ST 050 303 4892

6

—

10

—

18

—

9

—

18

—

13

—

2

—

6

—

7

—

13

—


19

—


Required miscellaneous

	<b>Hand shower - Brushed Platinum</b>	28 015 979-06
		

Required miscellaneous

	<b>Hand shower FlowReduce - Brushed Platinum</b>	28 016 979-06 0010
		

Required miscellaneous

	<b>Hand shower FlowReduce - Brushed Platinum</b>	28 012 979-06 0010
		

Required miscellaneous

	<b>Hand shower - Brushed Platinum</b>	28 018 979-06
		

Required miscellaneous

	<b>SERIES-VARIOUS Hand shower - Brushed Platinum</b>	28 029 979-06 0010
		

Required miscellaneous

	<b>SERIES-VARIOUS Hand shower - Brushed Platinum</b>	28 025 979-06 0010
		

Required miscellaneous

	<b>Hand shower - Brushed Platinum</b>	28 012 979-06
		


Required miscellaneous

	<b>Hand shower - Brushed Platinum</b>	28 017 979-06
		

Required miscellaneous

	<b>Hand shower - Brushed Platinum</b>	28 016 979-06
		

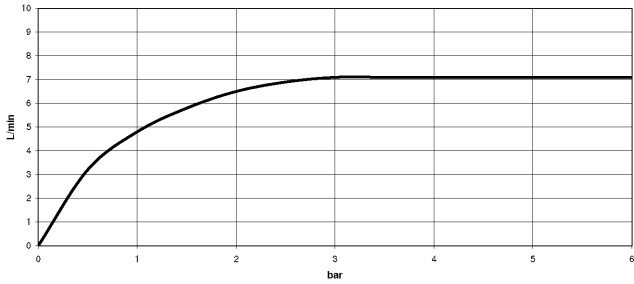
Required miscellaneous

	<b>Hand shower FlowReduce - Brushed Platinum</b>	28 018 979-06 0010
		

Required miscellaneous

	<b>SERIES-VARIOUS Hand shower - Brushed Platinum</b>	28 027 979-06 0010
		

Flow rate chart



Certificates

Belgaqua\_21-023-2 LGA\_38

WRAS\_2204



TARA Showerpipe 220 mm - Brushed Platinum

TARA

ST 050 303 4892

Codes & Standards

DIN 4109	EN 1717	ISO 3822	Scottish Water Byelaws
UK Water Supply Regulations	Ü-Zeichen		



## TARA Showerpipe 220 mm - Brushed Platinum

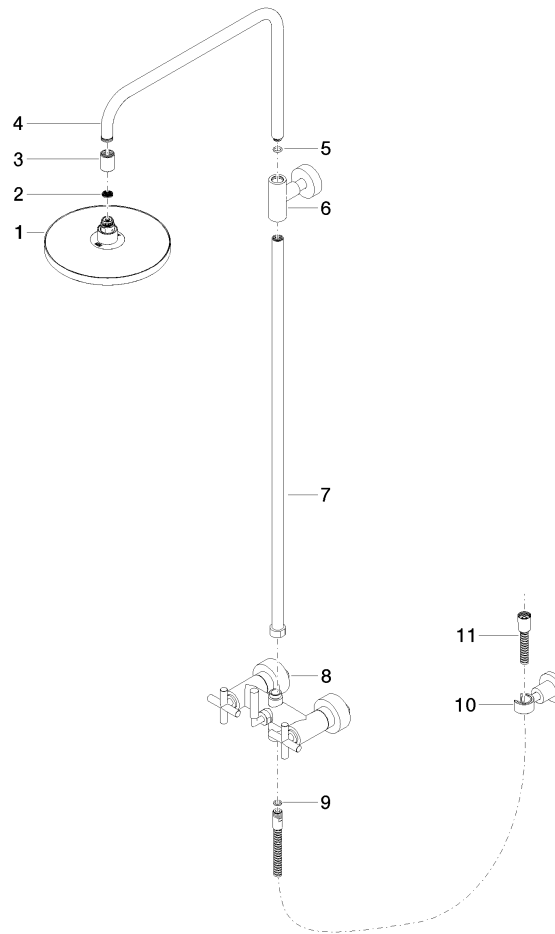
---

TARA

ST 050 303 4892

**Product version from 4/1/2024**

Parts for other  
finishes can be found  
here: [Chrome](#)





TARA Showerpipe 220 mm - Brushed Platinum

TARA

ST 050 303 4892

Spare parts list

Product version from 4/1/2024

No.	Item Number	Name	Quantity used	Delivery time
	90 12 05 092 20-06	shower	11	10



# TARA Showerpipe 220 mm - Brushed Platinum

TARA

ST 050 303 4892



- Three or five settings: COMPACT RAIN, COMPACT SOFT FLOW, COMPACT AQUAPRESSURE FLOW, max. flow rate 15 l/min (at 3 bar)
- with anti-scale system
- spray head Ø 100mm
- 1/2" connection
- WRAS 2210003
- Function from: 7 l/min

Intrinsic protection against back flow.

Fits: IMO, LULU, MADISON, MEM, TARA, CL.1, LISSÉ, VAIA, META, CYO

	Brushed Platinum	28 018 979-0
	Chrome	28 018 979-0
	Chrome	28 018 979-00 001
	Brushed Platinum	28 018 979-06 001
	Platinum	28 018 979-0
	Platinum	28 018 979-08 001
	Dark Chrome	28 018 979-1
	Dark Chrome	28 018 979-19 001
	Light Gold	28 018 979-26 001
	Light Gold	28 018 979-2
	Brushed Light Gold	28 018 979-27 001
	Brushed Light Gold	28 018 979-2
	Brushed Durabronze (23kt Gold)	28 018 979-2
	Brushed Durabronze (23kt Gold)	28 018 979-28 001
	Matte Black	28 018 979-3
	Matte Black	28 018 979-33 001
	Brushed Bronze	28 018 979-4
	Brushed Bronze	28 018 979-42 001
	Brushed Champagne (22kt Gold)	28 018 979-4
	Brushed Champagne (22kt Gold)	28 018 979-46 001
	Champagne (22kt Gold)	28 018 979-4
	Champagne (22kt Gold)	28 018 979-47 001
	Brushed Chrome	28 018 979-9
	Brushed Chrome	28 018 979-93 001
	Brushed Dark Platinum	28 018 979-9
	Brushed Dark Platinum	28 018 979-99 001



TARA Showerpipe 220 mm - Brushed Platinum

TARA

ST 050 303 4892

6  
—  
0  
—  
0  
—  
0  
—  
8  
—  
0  
—  
9  
—  
0  
—  
0  
—  
6  
—  
0  
—  
7  
—  
8  
—  
0  
—  
3  
—  
0  
—  
2  
—  
0  
—  
6  
—  
0  
—  
7  
—  
0  
—  
3  
—  
0  
—  
9  
—  
0  
—



## TARA Showerpipe 220 mm - Brushed Platinum

---

TARA

ST 050 303 4892



## TARA Showerpipe 220 mm - Brushed Platinum

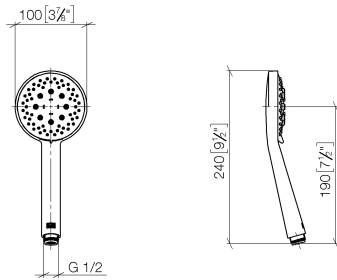
---

TARA

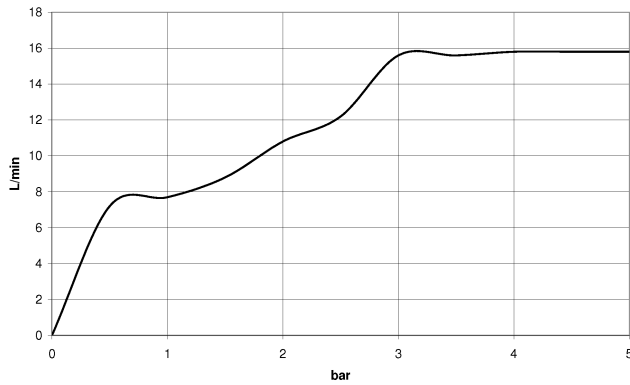
ST 050 303 4892

ST 050 303 4892

mm [inches]



### Flow rate chart



### Certificates

WRAS\_2210

DVGW\_DW-  
6517DN0

LGA\_29



TARA Showerpipe 220 mm - Brushed Platinum

TARA

ST 050 303 4892

Codes & Standards

DIN 4109	EN 1112	ISO 3822	Scottish Water Byelaws
UK Water Supply Regulations	Ü-Zeichen		



## TARA Showerpipe 220 mm - Brushed Platinum

TARA

ST 050 303 4892

**Product version from 4/1/2024**

Parts for other  
finishes can be found  
here: [Chrome](#)







TARA Showerpipe 220 mm - Brushed Platinum

TARA

ST 050 303 4892

Spare parts list

Product version from 4/1/2024

No.	Item Number	Name	Quantity used	Delivery time
	09 23 01 039 90	sieve	1	2