

TARA Showerpipe with shower mixer 300 mm - Brushed Champagne (22kt Gold)

TARA

ST 050 308 4892



- shower with fixed riser projection 420mm
- Rain shower: PURE RAIN, max. flow rate 14 l/min (at 3 bar)
- Function from: 10 l/min
- rain shower Ø 300 mm
- rain shower with anti-scale system
- Hand shower: COMPACT RAIN, max. flow rate 15 l/min (at 3 bar)
- spray head Ø 100mm
- rotary diverter for fixed-riser shower/hand shower
- height of fittings up to rain shower (bottom edge) 850mm
- height of fittings up to top edge of elbow 1167mm
- rosette for shower holder Ø 55mm
- rosette for wall mounting Ø 57mm
- rosette for shower mixer Ø 65mm
- gauge 150 mm - 13 mm
- 1500 mm metal shower hose
- 1/2" connection
- Pipe diameter 20 mm

	Brushed Champagne (22kt Gold)	ST 050 308 4892-46
	Chrome	ST 050 308 4892-00
	Brushed Platinum	ST 050 308 4892-06
	Platinum	ST 050 308 4892-08
	Dark Chrome	ST 050 308 4892-19
	Brushed Durabronze (23kt Gold)	ST 050 308 4892-28
	Matte Black	ST 050 308 4892-33
	Brushed Bronze	ST 050 308 4892-42
	Champagne (22kt Gold)	ST 050 308 4892-47
	Brushed Chrome	ST 050 308 4892-93
	Brushed Dark Platinum	ST 050 308 4892-99

Individual components of this set

You need the following components for this set



1x 28 018 979-46



1x 26 622 892-46

TARA Showerpipe with shower mixer 300 mm - Brushed Champagne (22kt Gold)

TARA

ST 050 308 4892



- Three or five settings: COMPACT RAIN, COMPACT SOFT FLOW, COMPACT AQUAPRESSURE FLOW, max. flow rate 15 l/min (at 3 bar)
- with anti-scale system
- spray head Ø 100mm
- 1/2" connection
- WRAS 2210003
- Function from: 7 l/min

Intrinsic protection against back flow.

Fits: IMO, LULU, MADISON, MEM, TARA, CL.1, LISSÉ, VAIA, META, CYO

	Brushed Champagne (22kt Gold)	28 018 979-4
	Chrome	28 018 979-0
	Chrome	28 018 979-00 001
	Brushed Platinum	28 018 979-0
	Brushed Platinum	28 018 979-06 001
	Platinum	28 018 979-0
	Platinum	28 018 979-08 001
	Dark Chrome	28 018 979-1
	Dark Chrome	28 018 979-19 001
	Light Gold	28 018 979-26 001
	Light Gold	28 018 979-2
	Brushed Light Gold	28 018 979-27 001
	Brushed Light Gold	28 018 979-2
	Brushed Durabrass (23kt Gold)	28 018 979-2
	Brushed Durabrass (23kt Gold)	28 018 979-28 001
	Matte Black	28 018 979-3
	Matte Black	28 018 979-33 001
	Brushed Bronze	28 018 979-4
	Brushed Bronze	28 018 979-42 001
	Brushed Champagne (22kt Gold)	28 018 979-46 001
	Champagne (22kt Gold)	28 018 979-4
	Champagne (22kt Gold)	28 018 979-47 001
	Brushed Chrome	28 018 979-9
	Brushed Chrome	28 018 979-93 001
	Brushed Dark Platinum	28 018 979-9
	Brushed Dark Platinum	28 018 979-99 001



TARA Showerpipe with shower mixer 300 mm - Brushed Champagne (22kt Gold)

TARA

ST 050 308 4892

6
—
10
—
0
—
16
—
0
—
18
—
0
—
9
—
0
—
0
—
16
—
0
—
17
—
18
—
0
—
13
—
0
—
2
—
0
—
0
—
17
—
0
—
13
—
0
—
19
—
0
—



TARA Showerpipe with shower mixer 300 mm - Brushed Champagne (22kt Gold)

TARA

ST 050 308 4892



TARA Showerpipe with shower mixer 300 mm - Brushed Champagne (22kt Gold)

TARA

ST 050 308 4892

TARA Showerpipe with shower mixer 300 mm - Brushed Champagne (22kt Gold)

TARA

ST 050 308 4892
mm [inches]



Flow rate chart



Certificates

WRAS_2210	DVGW_DW-6517DN0	LGA_29
-----------	-----------------	--------



TARA Showerpipe with shower mixer 300 mm - Brushed Champagne (22kt Gold)

TARA

ST 050 308 4892

Codes & Standards

DIN 4109	EN 1112	ISO 3822	Scottish Water Byelaws
UK Water Supply Regulations	Ü-Zeichen		



TARA Showerpipe with shower mixer 300 mm - Brushed Champagne (22kt Gold)

TARA

ST 050 308 4892

Product version from 4/1/2024

Parts for other
finishes can be found
here: [Chrome](#)





TARA Showerpipe with shower mixer 300 mm - Brushed Champagne (22kt Gold)

TARA

ST 050 308 4892

Spare parts list

Product version from 4/1/2024

No.	Item Number	Name	Quantity used	Delivery time
	09 23 01 039 90	sieve	1	2

TARA Showerpipe with shower mixer 300 mm - Brushed Champagne (22kt Gold)

TARA

ST 050 308 4892



- shower with fixed riser projection 420mm
- overhead shower: rain flow
- rain shower Ø 300 mm
- rain shower with anti-scale system
- max. rainshower flow 14 l/min
- Function from: 10 l/min
- rotary diverter for fixed-riser shower/hand shower
- height of fittings up to rain shower (bottom edge) 850mm
- height of fittings up to top edge of elbow 1167mm
- rosette for shower holder Ø 55mm
- rosette for wall mounting Ø 57mm
- rosette for shower mixer Ø 65mm
- gauge 150 mm - 13 mm
- 1500 mm metal shower hose
- 1/2" connection
- Pipe diameter 20 mm
- quick clearing

This article does not include a hand shower!
Intrinsic protection against back flow.

	Brushed Champagne (22kt Gold)	26 622 892-4
	Chrome	26 622 892-0
	Brushed Platinum	26 622 892-0
	Platinum	26 622 892-0
	Dark Chrome	26 622 892-1
	Brushed Durabronze (23kt Gold)	26 622 892-2
	Matte Black	26 622 892-3
	Brushed Bronze	26 622 892-4
	Champagne (22kt Gold)	26 622 892-4
	Brushed Chrome	26 622 892-9
	Brushed Dark Platinum	26 622 892-9



TARA Showerpipe with shower mixer 300 mm - Brushed Champagne (22kt Gold)

TARA

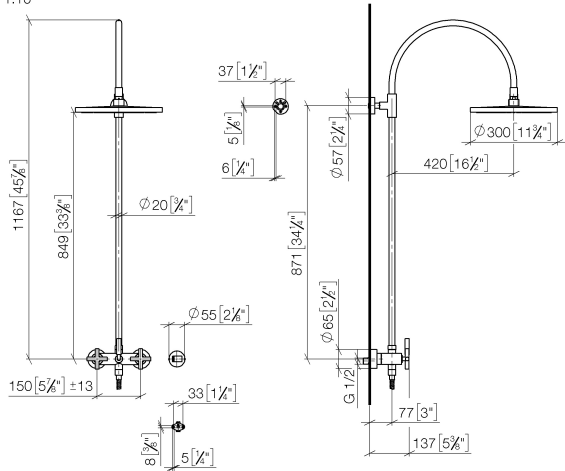
ST 050 308 4892

6
—
10
—
16
—
18
—
9
—
8
—
3
—
2
—
7
—
3
—
9
—

TARA Showerpipe with shower mixer 300 mm - Brushed Champagne (22kt Gold)

TARA

ST 050 308 4892
mm [inches]
1.10



Flow rate chart



Certificates

Belgaqua_24-004-2 LGA_38



TARA Showerpipe with shower mixer 300 mm - Brushed Champagne (22kt Gold)

TARA

ST 050 308 4892

Codes & Standards

DIN 4109	EN 1717	ISO 3822	Ü-Zeichen
----------	---------	----------	-----------



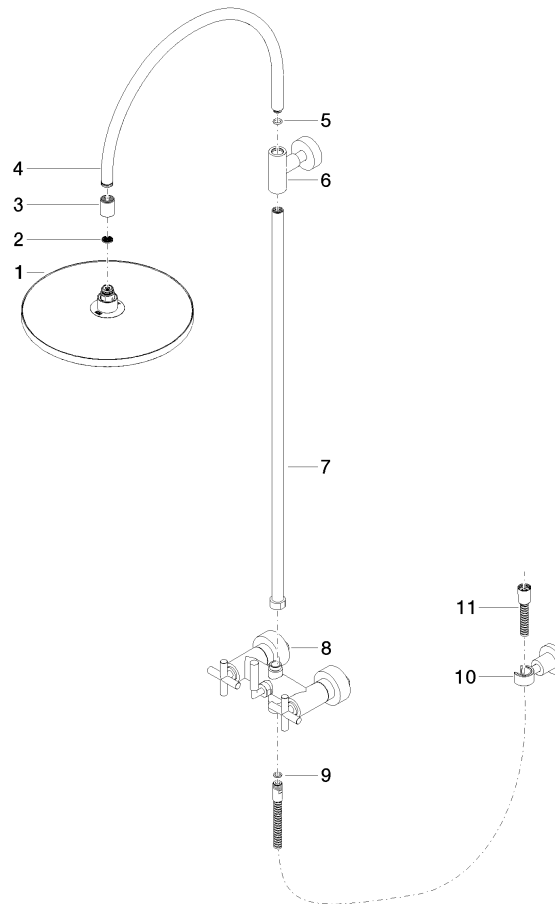
TARA Showerpipe with shower mixer 300 mm - Brushed Champagne (22kt Gold)

TARA

ST 050 308 4892

Product version from 4/1/2024

Parts for other
finishes can be found
here: [Chrome](#)





TARA Showerpipe with shower mixer 300 mm - Brushed Champagne (22kt Gold)

TARA

ST 050 308 4892

Spare parts list

Product version from 4/1/2024

No.	Item Number	Name	Quantity used	Delivery time
	04 12 05 091 00-46	shower	11	30