

WATER TUBE Kneipp wall elbow - Dark Chrome

IMO

ST 050 608 3979



Fits: IMO, MEM, CL.1, CYO

- LAMINAR FLOW, max. flow rate 15 l/min (at 3 bar)
- with volume control
- individual rosette 60 x 60 mm
- holder for Kneipp hose
- 1/2" wall elbow
- hose nozzle with sleeve M33
- with holding ring

	Dark Chrome	ST 050 608 3979-19
	Chrome	ST 050 608 3979-00
	Brushed Platinum	ST 050 608 3979-06
	Platinum	ST 050 608 3979-08
	Brushed Light Gold	ST 050 608 3979-27
	Brushed Durabronze (23kt Gold)	ST 050 608 3979-28
	Matte Black	ST 050 608 3979-33
	Brushed Champagne (22kt Gold)	ST 050 608 3979-46
	Champagne (22kt Gold)	ST 050 608 3979-47
	Brushed Chrome	ST 050 608 3979-93
	Brushed Dark Platinum	ST 050 608 3979-99

Individual components of this set

You need the following components for this set



1x 28 285 979-19



1x 27 821 979-19

WATER TUBE Kneipp wall elbow - Dark Chrome

IMO

ST 050 608 3979



- hose nozzle with sleeve M33
- with holding ring

	Dark Chrome	28 285 979-1
	Chrome	28 285 979-0
	Brushed Platinum	28 285 979-0
	Platinum	28 285 979-0
	Brushed Durabronze (23kt Gold)	28 285 979-2
	Matte Black	28 285 979-3
	Brushed Champagne (22kt Gold)	28 285 979-4
	Champagne (22kt Gold)	28 285 979-4
	Brushed Chrome	28 285 979-9
	Brushed Dark Platinum	28 285 979-9



WATER TUBE Kneipp wall elbow - Dark Chrome

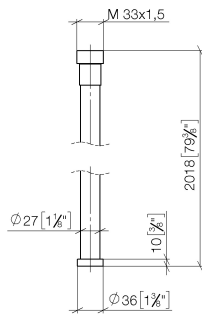
IMO

ST 050 608 3979

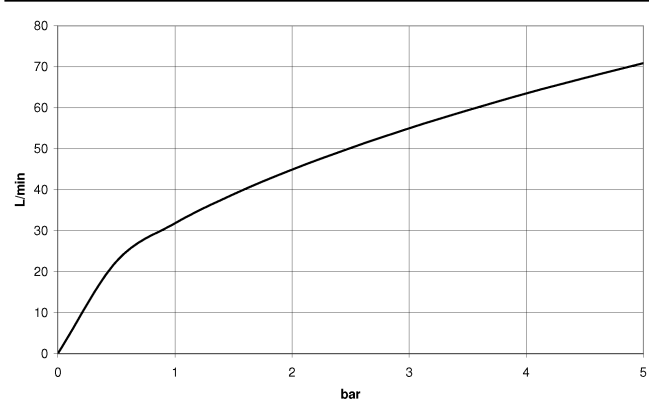
9  
—  
0  
—  
6  
—  
8  
—  
8  
—  
3  
—  
6  
—  
7  
—  
3  
—  
9  
—

ST 050 608 3979

mm [inches]

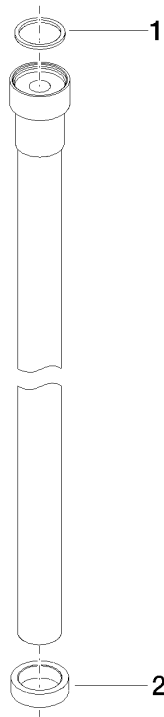


**Flow rate chart**





Parts for other  
finishes can be found  
here: [Chrome](#)



ST 050 608 3979

**Spare parts list**



Fits: IMO, MEM, CL.1, CYO

- LAMINAR FLOW, max. flow rate 15 l/min (at 3 bar)
- with volume control
- rosette 60 x 60 mm
- holder for Kneipp hose
- 1/2" wall elbow
- without hose

Intrinsic protection against back flow.

Product change as of 1.4.2023: max. flow 15 l/min

	Dark Chrome	27 821 979-1
	Chrome	27 821 979-0
	Brushed Platinum	27 821 979-0
	Platinum	27 821 979-0
	Brushed Light Gold	27 821 979-2
	Brushed Durabrass (23kt Gold)	27 821 979-2
	Matte Black	27 821 979-3
	Brushed Champagne (22kt Gold)	27 821 979-4
	Champagne (22kt Gold)	27 821 979-4
	Brushed Chrome	27 821 979-9
	Brushed Dark Platinum	27 821 979-9

ST 050 608 3979

9  
—  
10  
—  
16  
—  
18  
—  
17  
—  
18  
—  
13  
—  
6  
—  
17  
—  
13  
—  
19  
—

Recommended miscellaneous



**Concealed wall elbow -** 35 085 970 90  
•max. recess depth 163 mm  
•min. recess depth 90 mm

Required miscellaneous



**WATER TUBE Kneipp hose white** 28 285 979-19  
**2000 mm - Dark Chrome**  
•with holding ring  
•hose nozzle with sleeve M33

Required miscellaneous

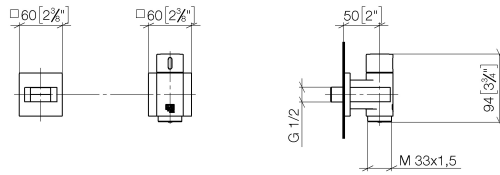


**WATER TUBE Kneipp hose black** 28 286 979-19  
**2000 mm - Dark Chrome**  
•with holding ring  
•hose nozzle with sleeve M33

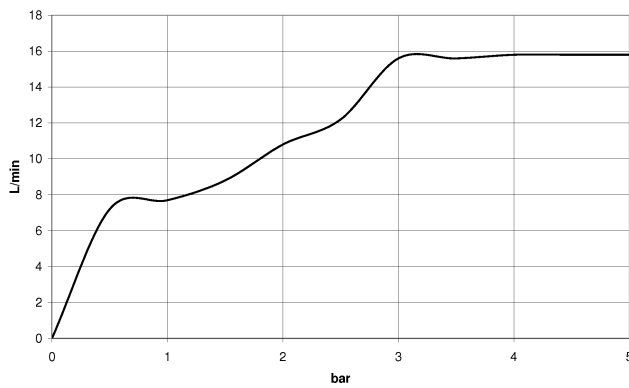


ST 050 608 3979

mm [inches]



### Flow rate chart



### Certificates

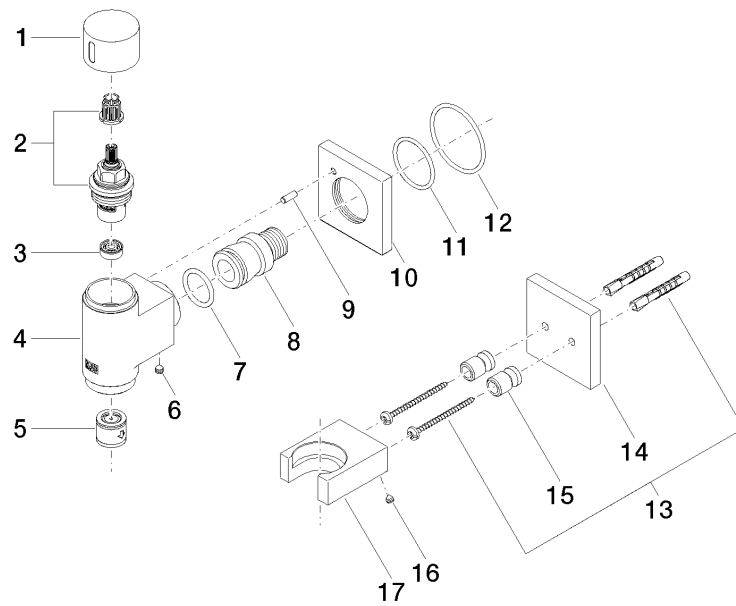
Belgaqua\_22\_280\_2

## Codes & Standards

EN 1717



**Product version from 3/6/2023**



## **Spare parts list**

**Product version from 3/6/2023**