

WATER TUBE Kneipp wall elbow - Brushed Durabrass (23kt Gold)

IMO

ST 050 608 3979




- LAMINAR FLOW, max. flow rate 15 l/min (at 3 bar)
- with volume control
- individual rosette 60 x 60 mm
- holder for Kneipp hose
- 1/2" wall elbow
- hose nozzle with sleeve M33
- with holding ring

	Brushed Durabrass (23kt Gold)	ST 050 608 3979-28
	Chrome	ST 050 608 3979-00
	Brushed Platinum	ST 050 608 3979-06
	Platinum	ST 050 608 3979-08
	Dark Chrome	ST 050 608 3979-19
	Brushed Light Gold	ST 050 608 3979-27
	Matte Black	ST 050 608 3979-33
	Brushed Champagne (22kt Gold)	ST 050 608 3979-46
	Champagne (22kt Gold)	ST 050 608 3979-47
	Brushed Chrome	ST 050 608 3979-93
	Brushed Dark Platinum	ST 050 608 3979-99

Individual components of this set

You need the following components for this set

	1x	28 285 979-28		1x	27 821 979-28
---	----	---------------	---	----	---------------

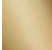

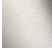



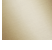



WATER TUBE Kneipp wall elbow - Brushed Durabrass (23kt Gold)

IMO

ST 050 608 3979



- hose nozzle with sleeve M33
- with holding ring

	Brushed Durabrass (23kt Gold)	28 285 979-2
	Chrome	28 285 979-0
	Brushed Platinum	28 285 979-0
	Platinum	28 285 979-0
	Dark Chrome	28 285 979-1
	Matte Black	28 285 979-3
	Brushed Champagne (22kt Gold)	28 285 979-4
	Champagne (22kt Gold)	28 285 979-4
	Brushed Chrome	28 285 979-9
	Brushed Dark Platinum	28 285 979-9



WATER TUBE Kneipp wall elbow - Brushed Durabrass (23kt Gold)

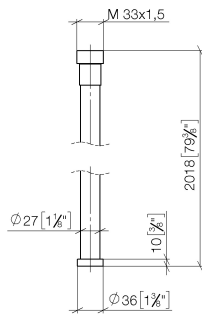
IMO

ST 050 608 3979

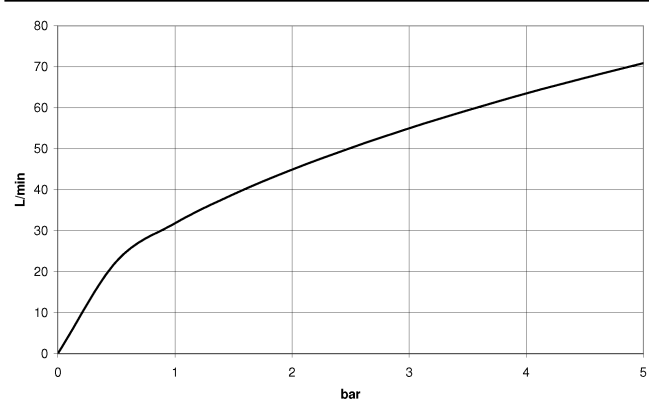
:8
—
:0
—
:6
—
:8
—
9
—
:3
—
6
—
.7
—
:3
—
:9
—

ST 050 608 3979

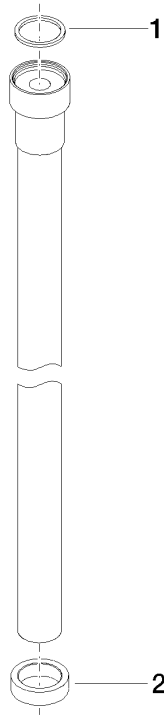
mm [inches]



Flow rate chart



Parts for other
finishes can be found
here: [Chrome](#)





WATER TUBE Kneipp wall elbow - Brushed Durabrass (23kt Gold)

IMO

ST 050 608 3979

Spare parts list

No.	Item Number	Name	Quantity used	Delivery time
	09 14 20 003 90	seal	2	2

WATER TUBE Kneipp wall elbow - Brushed Durabrass (23kt Gold)

IMO

ST 050 608 3979



Fits: IMO, MEM, CL.1, CYO

- LAMINAR FLOW, max. flow rate 15 l/min (at 3 bar)
- with volume control
- rosette 60 x 60 mm
- holder for Kneipp hose
- 1/2" wall elbow
- without hose

Intrinsic protection against back flow.

Product change as of 1.4.2023: max. flow 15 l/min

	Brushed Durabrass (23kt Gold)	27 821 979-2
	Chrome	27 821 979-0
	Brushed Platinum	27 821 979-0
	Platinum	27 821 979-0
	Dark Chrome	27 821 979-1
	Brushed Light Gold	27 821 979-2
	Matte Black	27 821 979-3
	Brushed Champagne (22kt Gold)	27 821 979-4
	Champagne (22kt Gold)	27 821 979-4
	Brushed Chrome	27 821 979-9
	Brushed Dark Platinum	27 821 979-9

ST 050 608 3979

:8
—
:0
—
:6
—
:8
—
9
—
:7
—
:3
—
6
—
:7
—
:3
—
:9
—

Recommended miscellaneous



Concealed wall elbow -
•max. recess depth 163 mm
•min. recess depth 90 mm

35 085 970 90

Required miscellaneous



WATER TUBE Kneipp hose white
2000 mm - Brushed Durabrand
(23kt Gold)
•with holding ring
•hose nozzle with sleeve M33

28 285 979-28

Required miscellaneous

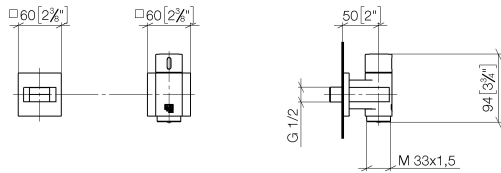


WATER TUBE Kneipp hose black
2000 mm - Brushed Durabrand
(23kt Gold)
•with holding ring
•hose nozzle with sleeve M33

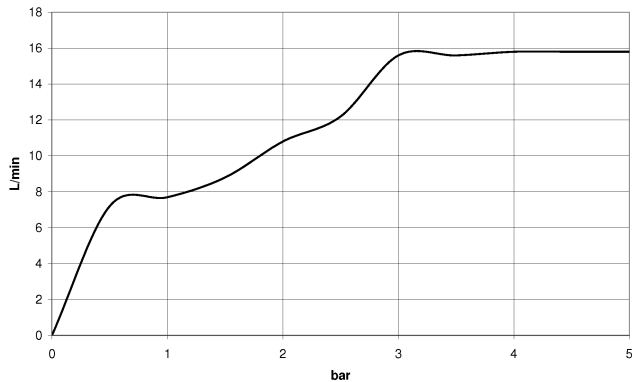
28 286 979-28

ST 050 608 3979

mm [inches]



Flow rate chart



Certificates

Belgaqua_22_280_2

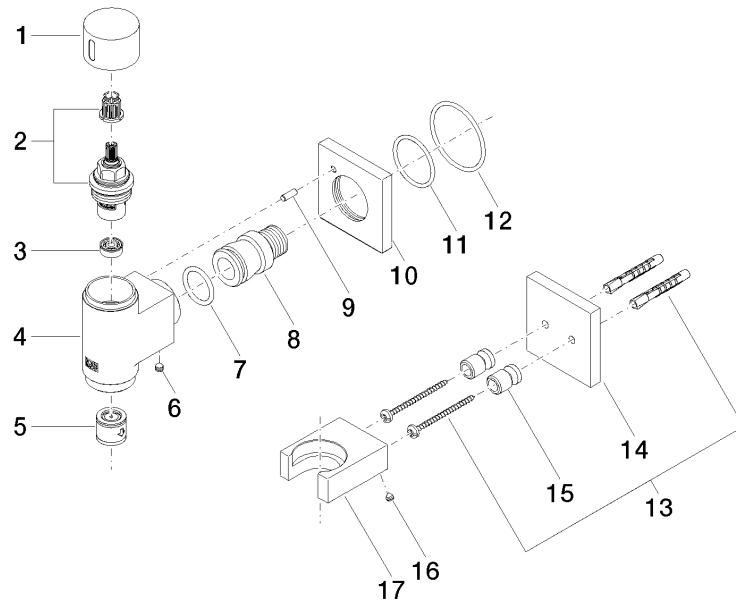
Codes & Standards

EN 1717

ST 050 608 3979

Product version from 3/12/2018 to 3/6/2023

Product version from 3/6/2023



ST 050 608 3979

Spare parts list

Product version from 3/12/2018 to 3/6/2023

Product version from 3/6/2023