


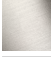



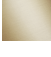
VAIA xTOOL Thermostat module with 3 valves - Brushed Dark Platinum

VAIA

ST 060 115 2809



- cover plate Ø 123 mm
- rosette Ø 60 mm
- temperature control handle with safety limit stop at 38°C
- thermostat cartridge
- 3x head part with cut-to-length spindle and sleeve

	Brushed Dark Platinum	ST 060 115 2809-99
	Chrome	ST 060 115 2809-00
	Brushed Platinum	ST 060 115 2809-06
	Platinum	ST 060 115 2809-08
	Dark Chrome	ST 060 115 2809-19
	Brushed Durabronze (23kt Gold)	ST 060 115 2809-28
	Brushed Bronze	ST 060 115 2809-42
	Brushed Champagne (22kt Gold)	ST 060 115 2809-46
	Champagne (22kt Gold)	ST 060 115 2809-47

Individual components of this set

You need the following components for this set

3x 36 607 809-99



1x 36 503 809-99



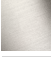




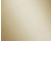



VAIA xTOOL Thermostat module with 3 valves - Brushed Dark Platinum
VAIA

ST 060 115 2809



- rosette Ø 60 mm
- head part with cut-to-length spindle and sleeve
- WRAS 2011026, 2010066

	Brushed Dark Platinum	36 607 809-9
	Chrome	36 607 809-0
	Brushed Platinum	36 607 809-0
	Platinum	36 607 809-0
	Dark Chrome	36 607 809-1
	Brushed Durabronze (23kt Gold)	36 607 809-2
	Brushed Bronze	36 607 809-4
	Brushed Champagne (22kt Gold)	36 607 809-4
	Champagne (22kt Gold)	36 607 809-4

ST 060 115 2809

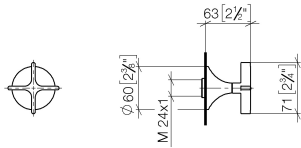
19
—
10
—
16
—
18
—
9
—
18
—
2
—
6
—
7
—

Required miscellaneous

-  **Wall valve 1/2" -**
•max. recess depth 145 mm
•min. recess depth 75 mm
- 35 607 970 90

ST 060 115 2809

mm [inches]



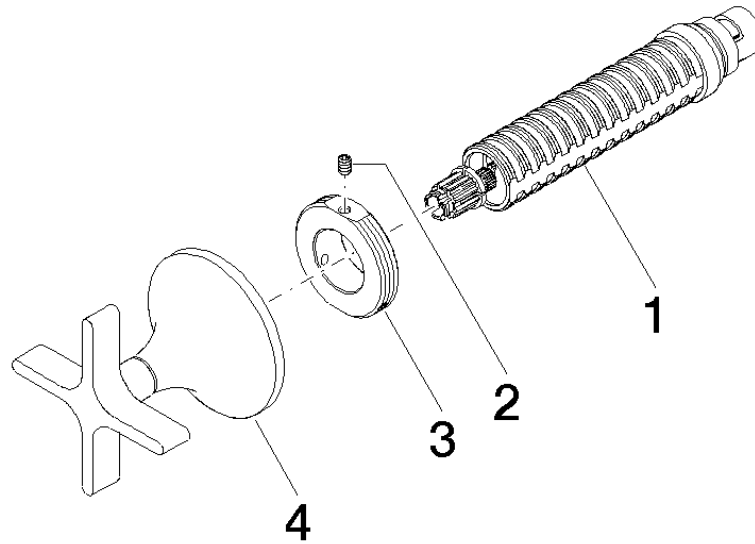
Certificates

IAPMO_4976	DVGW_DW-6501DN0	WRAS_2010	LGA_29	LGA_29
DVGW_DW-6512DN0	WRAS_2011			

Codes & Standards

ASME A112.18.1	cUPC	DIN 4109	EN 1111
EN 200	ISO 3822	Scottish Water Byelaws	UK Water Supply Regulations

Ü-Zeichen





ST 060 115 2809

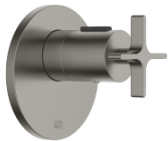
Spare parts list

No.	Item Number	Name	Quantity used	Delivery time
	90 90 03 143 00 90	top	4	2



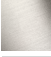




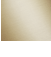

VAIA xTOOL Thermostat module with 3 valves - Brushed Dark Platinum

VAIA

ST 060 115 2809



- cover plate Ø 123 mm
- temperature control handle with safety limit stop at 38°C
- thermostat cartridge
- WRAS 2011026

	Brushed Dark Platinum	36 503 809-9
	Chrome	36 503 809-0
	Brushed Platinum	36 503 809-0
	Platinum	36 503 809-0
	Dark Chrome	36 503 809-1
	Brushed Durabronze (23kt Gold)	36 503 809-2
	Brushed Bronze	36 503 809-4
	Brushed Champagne (22kt Gold)	36 503 809-4
	Champagne (22kt Gold)	36 503 809-4

ST 060 115 2809

9
—
0
—
6
—
8
—
9
—
8
—
2
—
6
—
7
—

Required miscellaneous



xTOOL Concealed thermostat module without volume control -
●max. recess depth 110 mm
●min. recess depth 85 mm

35 503 970 90

Recommended miscellaneous



xGRID Attachment set for integrating in the dry wall construction -

12 340 970 90

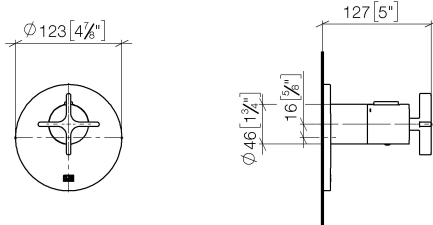
Required miscellaneous



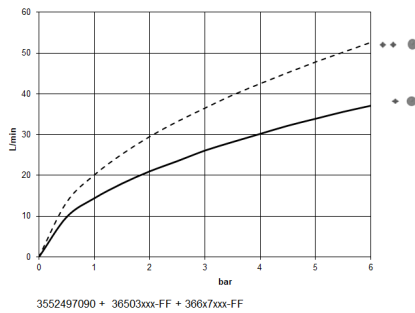
xGRID Installation track 555 mm - 12 360 970 90

ST 060 115 2809

mm [inches]



Flow rate chart



3552497090 + 36503xxx-FF + 366x7xxx-FF

Certificates

LGA_29

LGA_29

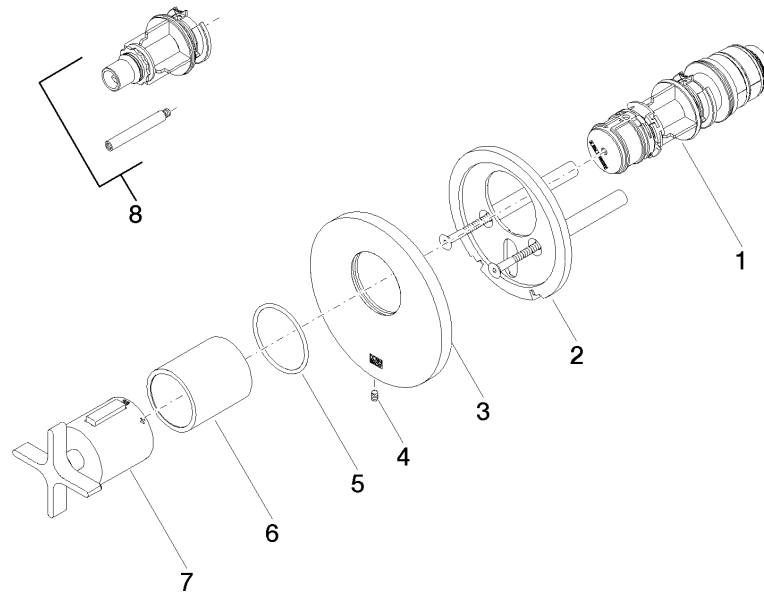
LGA_29

WRAS_2011

Codes & Standards

DIN 4109	ISO 3822	Scottish Water Byelaws	UK Water Supply Regulations
----------	----------	---------------------------	--------------------------------

Ü-Zeichen



Spare parts list

No.	Item Number	Name	Quantity used	Delivery time
	90 15 02 063 00 90	cartridge	8	2