







TARA Single-lever mixer with profi spray set - Brushed Platinum

ST 110 109 1888



- 235mm projection
- pivotable spout 360°
- air-enriched flow and spray flow
- height of mixer 400 mm
- test
- height up to aerator 230 mm
- single-lever mixer hole diameter 35 mm
- profi spray hole diameter 30mm
- automatic spout/shower diverter
- sprayface with anti-scaling system
- max. flow 7 l/min at 3 bar flow pressure
- lead-free
- This product can help a building meet the requirements of Green Building Rating Systems, e.g. LEED®, BREEAM®, DGNB

	Brushed Platinum	ST 110 109 1888-06
	Chrome	ST 110 109 1888-00
	Platinum	ST 110 109 1888-08
	Dark Chrome	ST 110 109 1888-19
	Brushed Chrome	ST 110 109 1888-93
	Brushed Dark Platinum	ST 110 109 1888-99

Individual components of this set

You need the following components for this set



1x 27 789 970-06



1x 33 826 888-06

TARA Single-lever mixer with profi spray set - Brushed Platinum

ST 110 109 1888









Fits: ELIO, TARA, TARA ULTRA

- spray flow
- automatic diverter for spout/Profi spray set
- height of mixer 665 mm
- individual rosette diameter 55mm
- profi spray hole diameter 30mm
- sprayface with anti-scaling system
- lead-free

Can only be combined with 33826790, 32800790, 33826888, 32815888, 20815892, 33826875.

Intrinsic protection against back flow.

	Brushed Platinum	27 789 970-0
	Chrome	27 789 970-0
	Platinum	27 789 970-0
	Dark Chrome	27 789 970-1
	Brushed Chrome	27 789 970-9
	Brushed Dark Platinum	27 789 970-9



TARA Single-lever mixer with profi spray set - Brushed Platinum

---

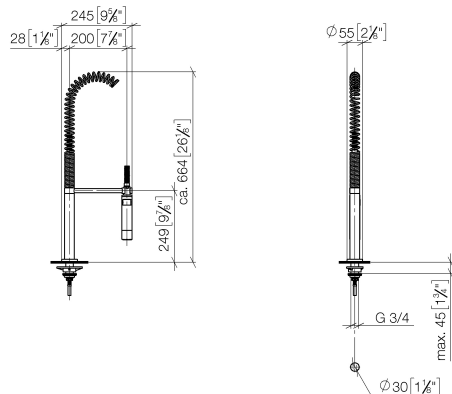
ST 110 109 1888

6  
—  
0  
—  
8  
—  
9  
—  
3  
—  
9  
—

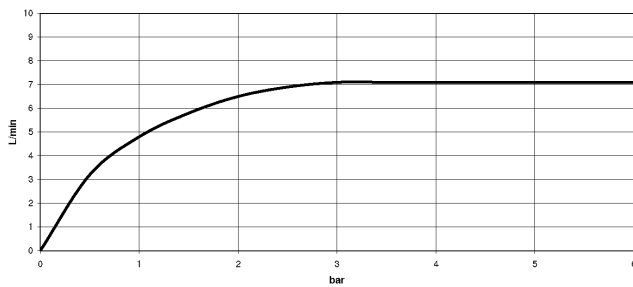
# TARA Single-lever mixer with profi spray set - Brushed Platinum

ST 110 109 1888

mm [inches]  
M 1:10



## Flow rate chart



## Certificates

Belgaqua\_22\_277\_2 LGA\_28

LGA\_18



TARA Single-lever mixer with profi spray set - Brushed Platinum

---

ST 110 109 1888

Codes & Standards

---

DIN 4109

EN 1717

ISO 3822

Ü-Zeichen



## TARA Single-lever mixer with profi spray set - Brushed Platinum

---

ST 110 109 1888

# TARA Single-lever mixer with profi spray set - Brushed Platinum

ST 110 109 1888

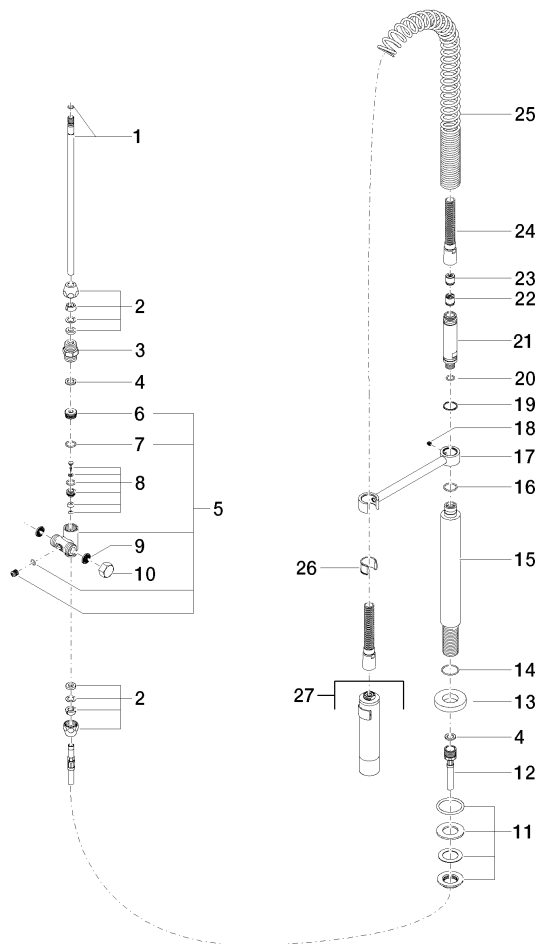
Product version up to 7/10/2018

Product version from 7/10/2018 to 9/18/2018

Product version from 9/18/2018 to 10/27/2020

## Product version from 10/27/2020

Parts for other  
finishes can be found  
here: [Chrome](#)





TARA Single-lever mixer with profi spray set - Brushed Platinum

ST 110 109 1888

Spare parts list

Product version up to 7/10/2018

Product version from 7/10/2018 to 9/18/2018

Product version from 9/18/2018 to 10/27/2020

**Product version from 10/27/2020**

No.	Item Number	Name	Quantity used	Delivery time
	04 24 02 046 01-07	pipe	30	10






# TARA Single-lever mixer with profi spray set - Brushed Platinum

ST 110 109 1888



- 235mm projection
- pivotable spout 360°
- air-enriched flow
- height of mixer 400 mm
- height up to aerator 230 mm
- single-lever mixer hole diameter 35mm
- max. flow 7 l/min at 3 bar flow pressure
- lead-free
- WRAS 2311044
- This product can help a building meet the requirements of Green Building Rating Systems, e.g. LEED®, BREEAM®, DGNB

Single-lever mixer for combining with rinsing/Profi spray only

	Brushed Platinum	33 826 888-0
	Chrome	33 826 888-0
	Platinum	33 826 888-0
	Durabrand (23kt Gold)	33 826 888-0
	Dark Chrome	33 826 888-1
	Brushed Durabrand (23kt Gold)	33 826 888-2
	Matte Black	33 826 888-3
	Brushed Champagne (22kt Gold)	33 826 888-4
	Champagne (22kt Gold)	33 826 888-4
	Brushed Chrome	33 826 888-9
	Brushed Dark Platinum	33 826 888-9

TARA Single-lever mixer with profi spray set - Brushed Platinum

ST 110 109 1888

6  
—  
0  
—  
8  
—  
9  
—  
9  
—  
8  
—  
3  
—  
6  
—  
7  
—  
3  
—  
9  
—

Recommended miscellaneous



**Profi spray set - Brushed Platinum** 27 789 970-06

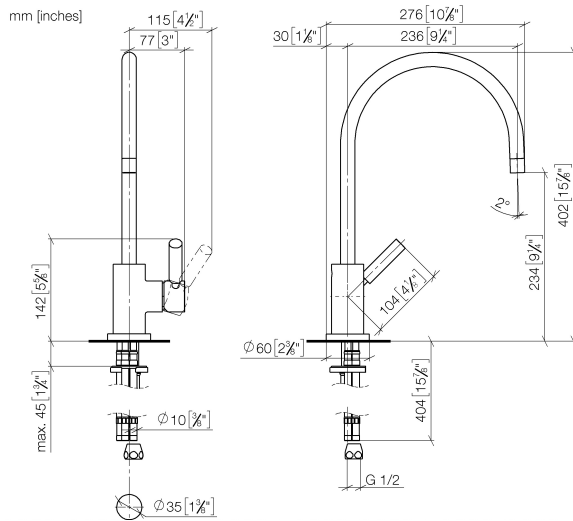
Recommended miscellaneous



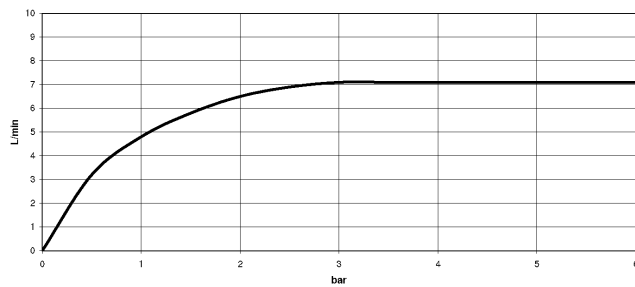
**Rinsing spray set - Brushed Platinum** 27 721 970-06

# TARA Single-lever mixer with profi spray set - Brushed Platinum

ST 110 109 1888



## Flow rate chart



## Certificates

ETA\_18

WRAS\_2311

LGA\_18



TARA Single-lever mixer with profi spray set - Brushed Platinum

ST 110 109 1888

Codes & Standards

DIN 4109	EN 817	ISO 3822	Scottish Water Byelaws
UK Water Supply Regulations	Ü-Zeichen	VA-Zeichen	



## TARA Single-lever mixer with profi spray set - Brushed Platinum

---

ST 110 109 1888

## TARA Single-lever mixer with profi spray set - Brushed Platinum

ST 110 109 1888

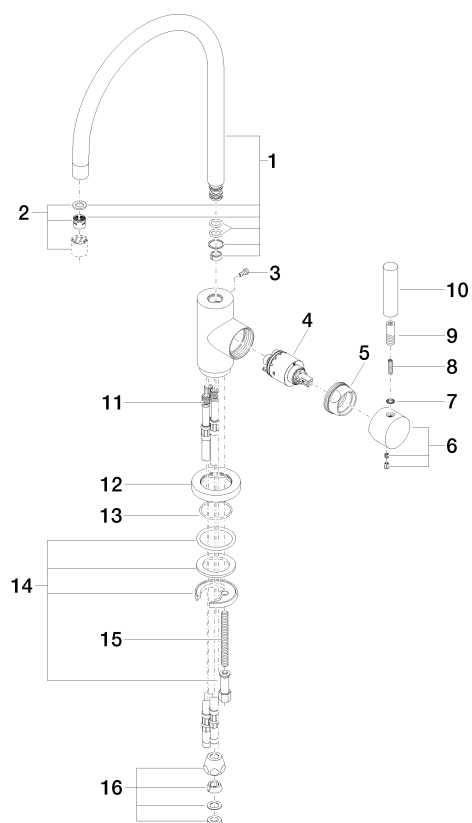
Product version up to 5/31/2010

Product version from 5/31/2010 to 3/10/2021

Product version from 3/10/2021 to 9/7/2021

**Product version from 9/1/2021**

Parts for other  
finishes can be found  
here: [Chrome](#)





TARA Single-lever mixer with profi spray set - Brushed Platinum

ST 110 109 1888

Spare parts list

Product version up to 5/31/2010

Product version from 5/31/2010 to 3/10/2021

Product version from 3/10/2021 to 9/7/2021

Product version from 9/1/2021

No.	Item Number	Name	Quantity used	Delivery time
	90 28 22 049 00-06	spout	18	10