

TARA Three-hole mixer with rinsing spray set - Durabrand (23kt Gold)

TARA

ST 110 201 1892



- 235mm projection
- pivotable spout 360°
- air-enriched flow and spray flow
- height of mixer 370 mm
- height up to aerator 212 mm
- hole diameter spout 35 mm
- hole diameter valve 32 mm
- hole diameter rinsing spray 32mm
- fabric braided hose 1500 mm
- automatic spout/shower diverter
- sprayface with anti-scaling system
- max. flow 7 l/min at 3 bar flow pressure
- lead-free
- This product can help a building meet the requirements of Green Building Rating Systems, e.g. LEED®, BREEAM®, DGNB

	Durabrand (23kt Gold)	ST 110 201 1892-09
	Chrome	ST 110 201 1892-00
	Brushed Platinum	ST 110 201 1892-06
	Platinum	ST 110 201 1892-08
	Dark Chrome	ST 110 201 1892-19
	Brushed Durabrand (23kt Gold)	ST 110 201 1892-28
	Matte Black	ST 110 201 1892-33
	Brushed Champagne (22kt Gold)	ST 110 201 1892-46
	Champagne (22kt Gold)	ST 110 201 1892-47
	Brushed Chrome	ST 110 201 1892-93
	Brushed Dark Platinum	ST 110 201 1892-99

Individual components of this set

You need the following components for this set



1x 20 815 892-09



1x 27 721 970-09

TARA Three-hole mixer with rinsing spray set - Durabronss (23kt Gold)

TARA

ST 110 201 1892



- 235mm projection
- pivotable spout 360°
- air-enriched flow
- height of mixer 370 mm
- height up to aerator 212 mm
- hole diameter spout 35 mm
- hole diameter valve 32 mm
- max. flow 7 l/min at 3 bar flow pressure
- lead-free
- This product can help a building meet the requirements of Green Building Rating Systems, e.g. LEED®, BREEAM®, DGNB
- WRAS 2107052

	Durabronss (23kt Gold)	20 815 892-0
	Chrome	20 815 892-0
	Brushed Platinum	20 815 892-0
	Platinum	20 815 892-0
	Dark Chrome	20 815 892-1
	Brushed Durabronss (23kt Gold)	20 815 892-2
	Matte Black	20 815 892-3
	Brushed Champagne (22kt Gold)	20 815 892-4
	Champagne (22kt Gold)	20 815 892-4
	Brushed Chrome	20 815 892-9
	Brushed Dark Platinum	20 815 892-9

TARA Three-hole mixer with rinsing spray set - Durabross (23kt Gold)

TARA

ST 110 201 1892

19
—
10
—
16
—
18
—
9
—
18
—
13
—
6
—
7
—
13
—
19
—

Recommended miscellaneous

Strainer waste with control handle 10 710 970-09
- Durabross (23kt Gold)



Recommended miscellaneous

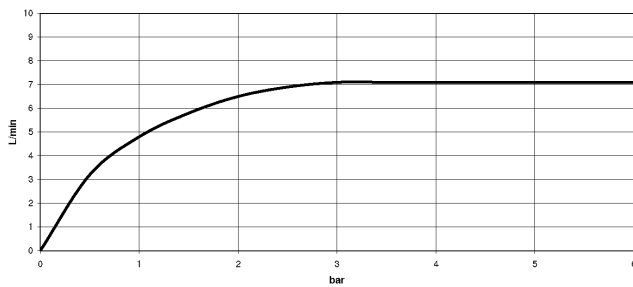
Dispenser with rosette - 82 444 970-09
Durabross (23kt Gold)



ST 110 201 1892



Flow rate chart



Certificates

GDV_0400



TARA Three-hole mixer with rinsing spray set - Durabrass (23kt Gold)

TARA

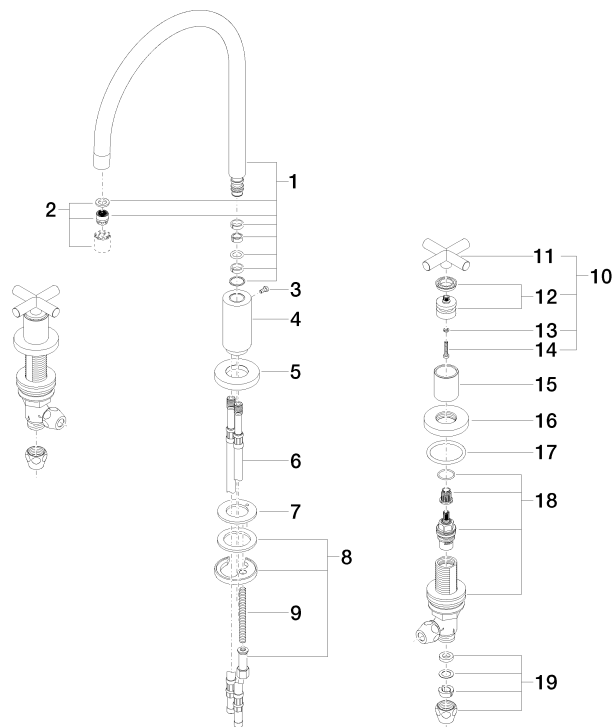
ST 110 201 1892

Codes & Standards

Executive Order
no. 1007

Product version from 6/30/2009

Parts for other
finishes can be found
here: [Chrome](#)



ST 110 201 1892

Spare parts list

Product version from 6/30/2009



Fits: ELIO, TARA, TARA ULTRA

- with round rosette
- spray flow
- automatic spout/shower diverter
- height of mixer 191 mm
- hole diameter rinsing spray 32mm
- fabric braided hose 1500 mm
- sprayface with anti-scaling system
- lead-free

Can only be combined with 33826790, 32800790, 33826888, 32815888, 20815892, 33826875.
Intrinsic protection against back flow.

	Durabrand (23kt Gold)	27 721 970-0
	Chrome	27 721 970-0
	Brushed Platinum	27 721 970-0
	Platinum	27 721 970-0
	Dark Chrome	27 721 970-1
	Brushed Durabrand (23kt Gold)	27 721 970-2
	Matte Black	27 721 970-3
	Brushed Champagne (22kt Gold)	27 721 970-4
	Champagne (22kt Gold)	27 721 970-4
	Brushed Chrome	27 721 970-9
	Brushed Dark Platinum	27 721 970-9



TARA Three-hole mixer with rinsing spray set - Durabrass (23kt Gold)

TARA

ST 110 201 1892

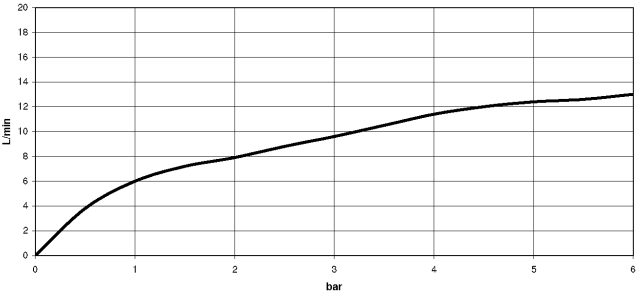
9
—
10
—
16
—
18
—
9
—
8
—
3
—
6
—
7
—
3
—
9
—

ST 110 201 1892

mm [inches]



Flow rate chart



Certificates

LGA_29 IAPMO_N-4976 IAPMO_6 LGA_18 Belgaqua_21-027-2



TARA Three-hole mixer with rinsing spray set - Durabrass (23kt Gold)

TARA

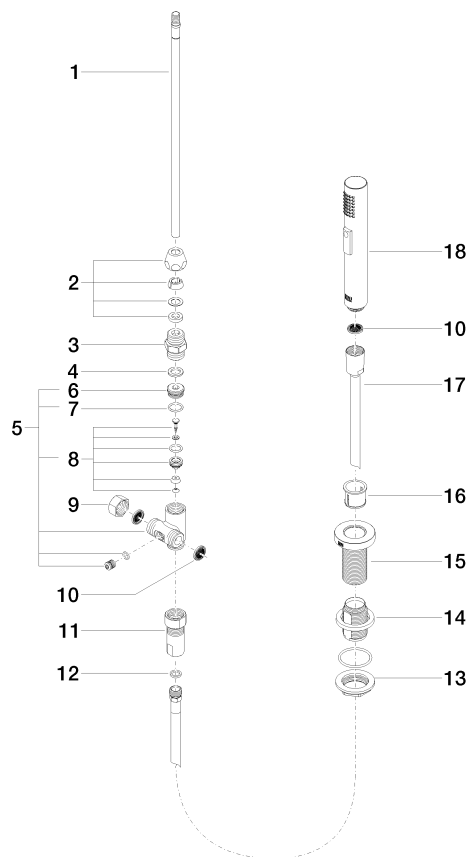
ST 110 201 1892

Codes & Standards

DIN 4109	EN 1717	ISO 3822	NSF372
NSF61	Ü-Zeichen		

Product version from 10/27/2020

Parts for other
finishes can be found
here: Chrome





TARA Three-hole mixer with rinsing spray set - Durabrass (23kt Gold)

TARA

ST 110 201 1892

Spare parts list

Product version from 10/27/2020

No.	Item Number	Name	Quantity used	Delivery time
	04 24 02 046 01-07	pipe	19	10