

TARA Three-hole mixer with rinsing spray set - Brushed Champagne (22kt Gold)

TARA

ST 110 201 1892



- 235mm projection
- pivotable spout 360°
- air-enriched flow and spray flow
- height of mixer 370 mm
- height up to aerator 212 mm
- hole diameter spout 35 mm
- hole diameter valve 32 mm
- hole diameter rinsing spray 32mm
- fabric braided hose 1500 mm
- automatic spout/shower diverter
- sprayface with anti-scaling system
- max. flow 7 l/min at 3 bar flow pressure
- lead-free
- This product can help a building meet the requirements of Green Building Rating Systems, e.g. LEED®, BREEAM®, DGNB

| | | |
|--|-------------------------------|--------------------|
| | Brushed Champagne (22kt Gold) | ST 110 201 1892-46 |
| | Chrome | ST 110 201 1892-00 |
| | Brushed Platinum | ST 110 201 1892-06 |
| | Platinum | ST 110 201 1892-08 |
| | Durabrass (23kt Gold) | ST 110 201 1892-09 |
| | Dark Chrome | ST 110 201 1892-19 |
| | Brushed Durabrass (23kt Gold) | ST 110 201 1892-28 |
| | Matte Black | ST 110 201 1892-33 |
| | Champagne (22kt Gold) | ST 110 201 1892-47 |
| | Brushed Chrome | ST 110 201 1892-93 |
| | Brushed Dark Platinum | ST 110 201 1892-99 |

Individual components of this set

You need the following components for this set



1x

20 815 892-46



1x

27 721 970-46

TARA Three-hole mixer with rinsing spray set - Brushed Champagne (22kt Gold)

TARA

ST 110 201 1892



- 235mm projection
- pivotable spout 360°
- air-enriched flow
- height of mixer 370 mm
- height up to aerator 212 mm
- hole diameter spout 35 mm
- hole diameter valve 32 mm
- max. flow 7 l/min at 3 bar flow pressure
- lead-free
- This product can help a building meet the requirements of Green Building Rating Systems, e.g. LEED®, BREEAM®, DGNB
- WRAS 2107052

| | | |
|--|--------------------------------|--------------|
|  | Brushed Champagne (22kt Gold) | 20 815 892-4 |
|  | Chrome | 20 815 892-0 |
|  | Brushed Platinum | 20 815 892-0 |
|  | Platinum | 20 815 892-0 |
|  | Durabronze (23kt Gold) | 20 815 892-0 |
|  | Dark Chrome | 20 815 892-1 |
|  | Brushed Durabronze (23kt Gold) | 20 815 892-2 |
|  | Matte Black | 20 815 892-3 |
|  | Champagne (22kt Gold) | 20 815 892-4 |
|  | Brushed Chrome | 20 815 892-9 |
|  | Brushed Dark Platinum | 20 815 892-9 |



TARA Three-hole mixer with rinsing spray set - Brushed Champagne (22kt Gold)

TARA

ST 110 201 1892

- 6
-
- 10
-
- 16
-
- 18
-
- 19
-
- 9
-
- 8
-
- 3
-
- 7
-
- 3
-
- 9
-

Recommended miscellaneous



Dispenser with rosette - Brushed Champagne (22kt Gold) 82 444 970-46

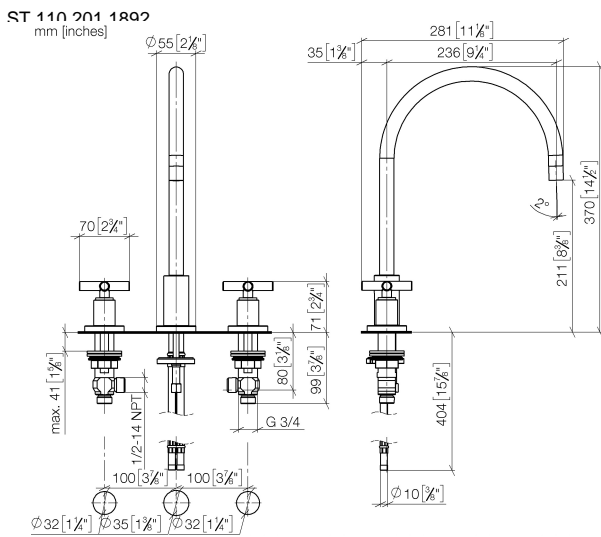
Recommended miscellaneous



Strainer waste with control handle - Brushed Champagne (22kt Gold) 10 710 970-46

TARA Three-hole mixer with rinsing spray set - Brushed Champagne (22kt Gold)

TARA



Flow rate chart



Certificates

GDV_0400



TARA Three-hole mixer with rinsing spray set - Brushed Champagne (22kt Gold)

TARA

ST 110 201 1892

Codes & Standards

Executive Order
no. 1007



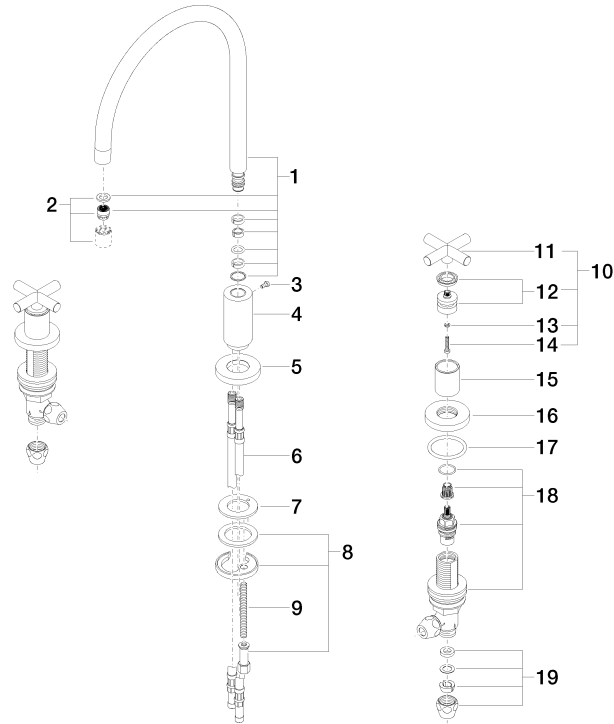
TARA Three-hole mixer with rinsing spray set - Brushed Champagne (22kt Gold)

TARA

ST 110 201 1892

Product version from 6/30/2009

Parts for other
finishes can be found
here: [Chrome](#)



Spare parts list

Product version from 6/30/2009



Fits: ELIO, TARA, TARA ULTRA

- with round rosette
- spray flow
- automatic spout/shower diverter
- height of mixer 191 mm
- hole diameter rinsing spray 32mm
- fabric braided hose 1500 mm
- sprayface with anti-scaling system
- lead-free

Can only be combined with 33826790, 32800790, 33826888, 32815888, 20815892, 33826875.

Intrinsic protection against back flow.

| | | |
|--|-------------------------------|--------------|
|  | Brushed Champagne (22kt Gold) | 27 721 970-4 |
|  | Chrome | 27 721 970-0 |
|  | Brushed Platinum | 27 721 970-0 |
|  | Platinum | 27 721 970-0 |
|  | Durabrand (23kt Gold) | 27 721 970-0 |
|  | Dark Chrome | 27 721 970-1 |
|  | Brushed Durabrand (23kt Gold) | 27 721 970-2 |
|  | Matte Black | 27 721 970-3 |
|  | Champagne (22kt Gold) | 27 721 970-4 |
|  | Brushed Chrome | 27 721 970-9 |
|  | Brushed Dark Platinum | 27 721 970-9 |



TARA Three-hole mixer with rinsing spray set - Brushed Champagne (22kt Gold)

TARA

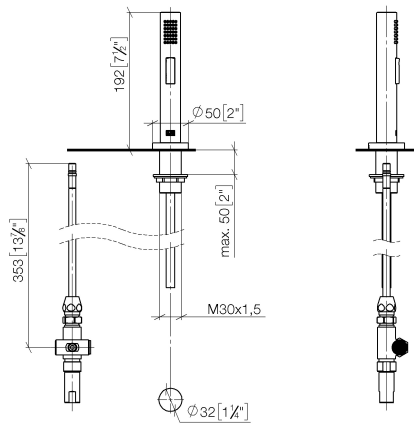
ST 110 201 1892

6
—
10
—
16
—
18
—
19
—
9
—
8
—
13
—
7
—
13
—
19
—

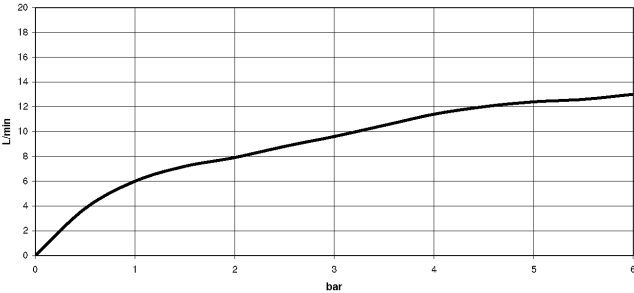
TARA Three-hole mixer with rinsing spray set - Brushed Champagne (22kt Gold)

TARA

ST 110 201 1892
mm [inches]



Flow rate chart



Certificates

LGA_29 IAPMO_N-4976 IAPMO_6 LGA_18



TARA Three-hole mixer with rinsing spray set - Brushed Champagne (22kt Gold)

TARA

ST 110 201 1892

Codes & Standards

| | | | |
|----------|----------|--------|-------|
| DIN 4109 | ISO 3822 | NSF372 | NSF61 |
|----------|----------|--------|-------|

Ü-Zeichen



TARA Three-hole mixer with rinsing spray set - Brushed Champagne (22kt Gold)

TARA

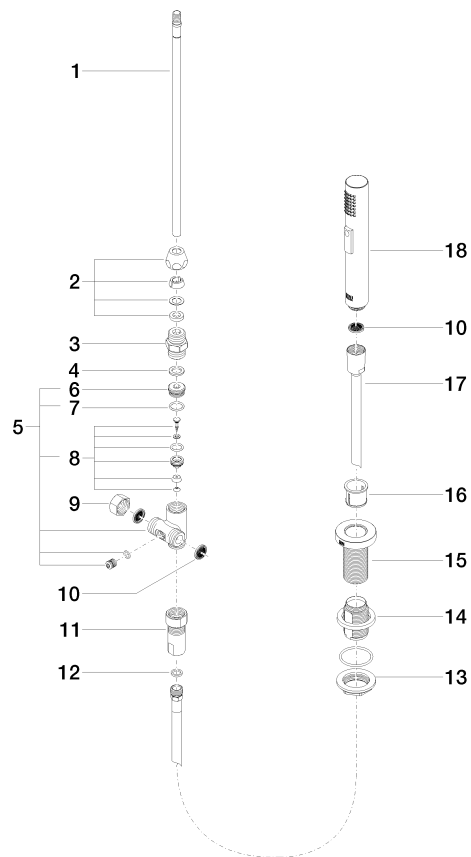
ST 110 201 1892

TARA Three-hole mixer with rinsing spray set - Brushed Champagne (22kt Gold)

TARA

ST 110 201 1892

Parts for other
finishes can be found
here: [Chrome](#)



Spare parts list