

## VAIA AIR SWITCH Control button - Chrome

VAIA

10 713 809 Product version from 7/1/2023



- for controlling a waste disposal unit

Compatible with waste disposal units with integrated air switch made by Insinkerator®, e.g. Evolution.

The products are not available in all markets, please contact your Dornbracht sales force.

For more information go to [www.insinkerator.com](http://www.insinkerator.com)

|                                                                                     |                               |               |
|-------------------------------------------------------------------------------------|-------------------------------|---------------|
|    | Chrome                        | 10 713 809-00 |
|    | Brushed Platinum              | 10 713 809-06 |
|    | Platinum                      | 10 713 809-08 |
|    | Durabrand (23kt Gold)         | 10 713 809-09 |
|    | Dark Chrome                   | 10 713 809-19 |
|    | Brushed Durabrand (23kt Gold) | 10 713 809-28 |
|    | Matte Black                   | 10 713 809-33 |
|    | Brushed Bronze                | 10 713 809-42 |
|    | Brushed Champagne (22kt Gold) | 10 713 809-46 |
|   | Champagne (22kt Gold)         | 10 713 809-47 |
|  | Brushed Chrome                | 10 713 809-93 |
|  | Brushed Dark Platinum         | 10 713 809-99 |

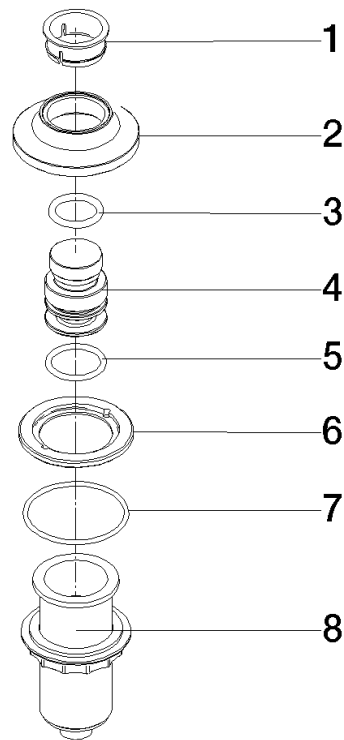
10 713 809 Product version from 7/1/2023

mm [inches]



10 713 809 Product version from 7/1/2023

Parts for other  
finishes can be found  
here: Brushed  
Platinum



## Spare parts list

| No. | Item Number        | Name       | Quantity used | Delivery time |
|-----|--------------------|------------|---------------|---------------|
| 5   | 09 14 10 015 90    | seal       | 1.00          | 2             |
| 7   | 09 14 10 210 90    | seal       | 1.00          | 2             |
| 4   | 90 21 33 052 00-00 | Pushbutton | 1.00          | 10            |
| 1   | 09 28 10 141 90    | sleeve     | 1.00          | 2             |
| 2   | 90 27 80 034 00-00 | rosette    | 1.00          | 10            |
| 8   | 04 30 01 186 00 90 | sleeve     | 1.00          | 2             |
| 6   | 90 24 01 033 00 90 | ring       | 1.00          | 2             |
| 3   | 09 14 10 507 90    | seal       | 1.00          | 2             |