

TARA Lever - Brushed Champagne (22kt Gold)

TARA

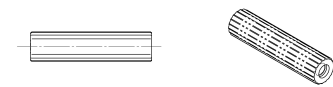
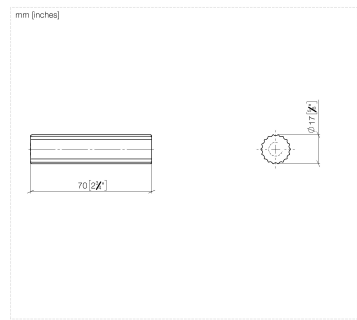
11 171 882



- With linear texture
- for basin fittings
- two are required for three-hole fittings

	Brushed Champagne (22kt Gold)	11 171 882-46
	Chrome	11 171 882-00
	Brushed Platinum	11 171 882-06
	Platinum	11 171 882-08
	Dark Chrome	11 171 882-19
	Brushed Durabronze (23kt Gold)	11 171 882-28
	Matte Black	11 171 882-33
	Brushed Dark Brass	11 171 882-39
	Brushed Bronze	11 171 882-42
	Champagne (22kt Gold)	11 171 882-47
	Brushed Chrome	11 171 882-93
	Brushed Dark Platinum	11 171 882-99

11 171 882



11 171 882

Parts for other
finishes can be found
here: [Chrome](#)

