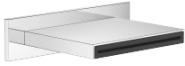


WATER SHEET Cascade spout for wall mounting - Chrome

IMO

13 415 979



- 150mm projection
- CASCADE, max. flow rate 26.5 l/min (at 3 bar)
- cover plate 240 x 60 mm
- 1/2" connection
- plug-link mounting
- WRAS 2306001

Fits: IMO, LULU, MADISON, MEM, TARA, CL.1, LISSÉ, VAIA, META, CYO

| | | |
|--|--------------------------------|---------------|
|  | Chrome | 13 415 979-00 |
|  | Brushed Platinum | 13 415 979-06 |
|  | Platinum | 13 415 979-08 |
|  | Dark Chrome | 13 415 979-19 |
|  | Light Gold | 13 415 979-26 |
|  | Brushed Light Gold | 13 415 979-27 |
|  | Brushed Durabronze (23kt Gold) | 13 415 979-28 |
|  | Matte Black | 13 415 979-33 |
|  | Brushed Bronze | 13 415 979-42 |
|  | Brushed Champagne (22kt Gold) | 13 415 979-46 |
|  | Champagne (22kt Gold) | 13 415 979-47 |
|  | Brushed Chrome | 13 415 979-93 |
|  | Brushed Dark Platinum | 13 415 979-99 |

Recommended miscellaneous



- Concealed wall elbow -**
- max. recess depth 163 mm
 - min. recess depth 90 mm

35 085 970 90

Recommended miscellaneous

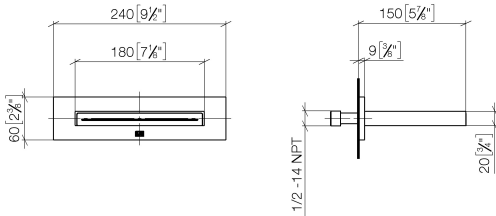


- Concealed wall elbow -**
- max. recess depth 163 mm
 - min. recess depth 90 mm

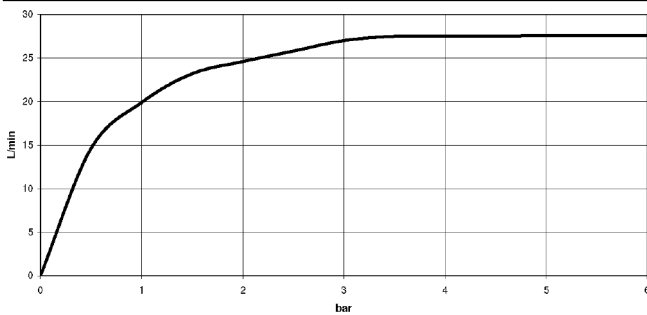
35 085 970 90

13 415 979

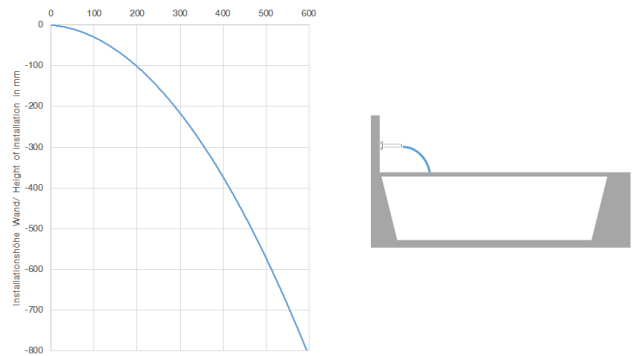
mm [inches]



Flow rate chart



Trajectory diagram



Codes & Standards

ASME A112.18.1

cUPC

DIN 4109

ISO 3822

Scottish Water
Byelaws

UK Water Supply
Regulations

Ü-Zeichen



WATER SHEET Cascade spout for wall mounting - Chrome

IMO

13 415 979

Certificates

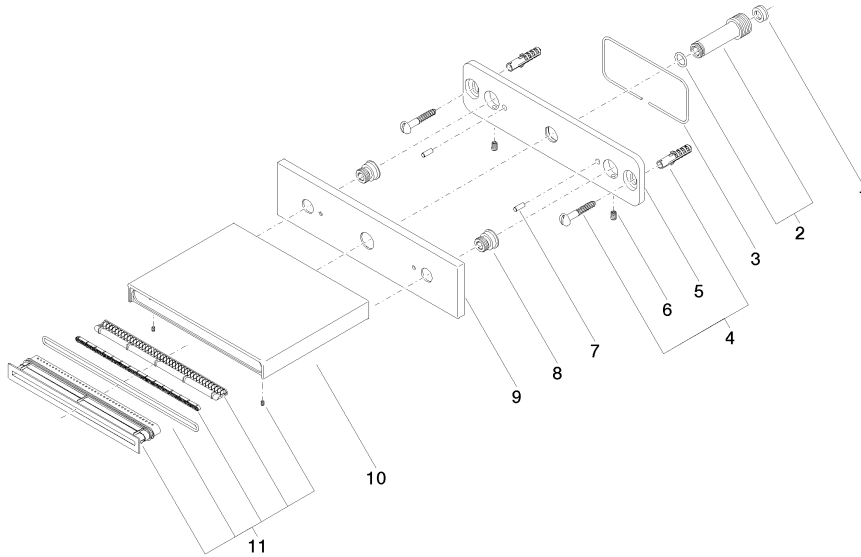
LGA_19

WRAS_2306

IAPMO_4976

13 415 979

Product version from 10/1/2023





WATER SHEET Cascade spout for wall mounting - Chrome

IMO

13 415 979

Spare parts list

Product version from 10/1/2023

| No. | Item Number | Name | Quantity used | Delivery time |
|-----|-----------------|--------------|---------------|---------------|
| | 09 23 01 057 90 | flow reducer | 13 | 2 |