








## CYO Deck-mounted basin spout without pop-up waste - Brushed Dark Platinum

CYO

13 715 811

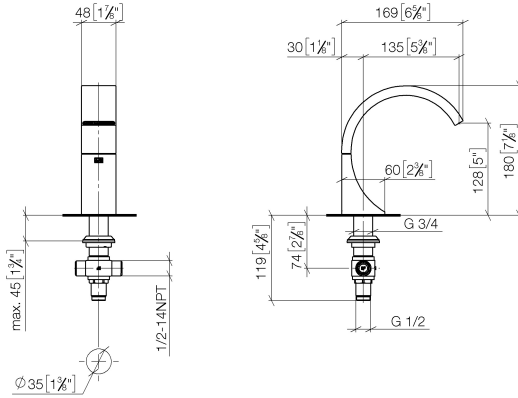


- 133mm projection
- fixed spout
- rectangular, air-enriched flow
- height of mixer 180 mm
- height up to aerator 128 mm
- hole diameter 35 mm
- 2x 1/2" x 1/2" high pressure hose
- max. flow 4.5 l/min
- lead-free
- This product can help a building meet the requirements of Green Building Rating Systems, e.g. LEED®, BREEAM®, DGNB
- WRAS

	Brushed Dark Platinum	13 715 811-99
	Chrome	13 715 811-00
	Brushed Platinum	13 715 811-06
	Dark Chrome	13 715 811-19
	Brushed Durabronze (23kt Gold)	13 715 811-28
	Platinum / Brushed Platinum	13 715 811-36
	Durabronze / Brushed Durabronze (23kt Gold)	13 715 811-38

13 715 811

mm [inches]



Flow rate chart



### Codes & Standards

ASME A112.18.1	cUPC	DIN 4109	EPA WaterSense
ISO 3822	NSF372	NSF61	Scottish Water Byelaws
UK Water Supply Regulations	Ü-Zeichen	WaterSense	



CYO Deck-mounted basin spout without pop-up waste - Brushed Dark Platinum

CYO

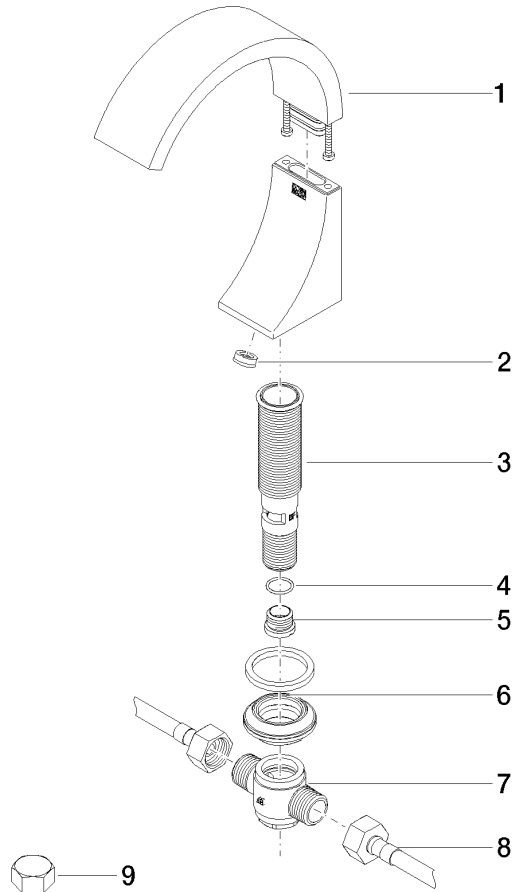
13 715 811

Certificates and sustainability

LGA_38	WRAS_2107	IAPMO_N-4	IAPMO_4976	IAPMO_8834
IAPMO_6				

13 715 811

Parts for other  
finishes can be found  
here: [Chrome](#)



## Spare parts list

No.	Item Number	Name	Quantity used	Delivery time
8	04 30 04 096 00 90	hose	2.00	2
1	90 11 70 012 00-99	spout	1.00	20
4	09 14 10 017 90	seal	1.00	2
6	04 23 10 044 09 90	fixing set	1.00	2
3	90 30 01 033 00 90	base	1.00	2
5	09 24 04 021 10 90	nipple	1.00	2
2	09 23 01 163 90	flow reducer	1.00	2
9	04 21 02 006 00 92	cap	2.00	2
7	90 17 11 020 10 90	distributor	1.00	2