

13 800 809



- 190mm projection
- fixed spout
- circular, air-enriched flow
- hole diameter 37 mm
- rosette Ø 60 mm
- 1/2" connection
- plug-link mounting
- max. flow 5.7 l/min
- lead-free
- WRAS 1801016
- This product can help a building meet the requirements of Green Building Rating Systems, e.g. LEED®, BREEAM®, DGNB

For Touchfree control please order eSet Touchfree WITH or WITHOUT temperature adjustment

	Brushed Dark Platinum	13 800 809-99
	Chrome	13 800 809-00
	Brushed Platinum	13 800 809-06
	Platinum	13 800 809-08
	Dark Chrome	13 800 809-19
	Brushed Durabronze (23kt Gold)	13 800 809-28
	Brushed Bronze	13 800 809-42
	Brushed Champagne (22kt Gold)	13 800 809-46
	Champagne (22kt Gold)	13 800 809-47

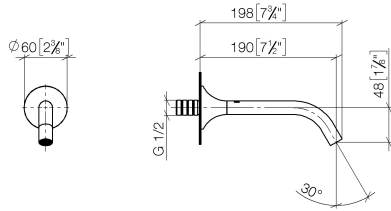
Recommended miscellaneous

- Concealed wall elbow -** 35 085 970 90
- max. recess depth 163 mm
 - min. recess depth 90 mm

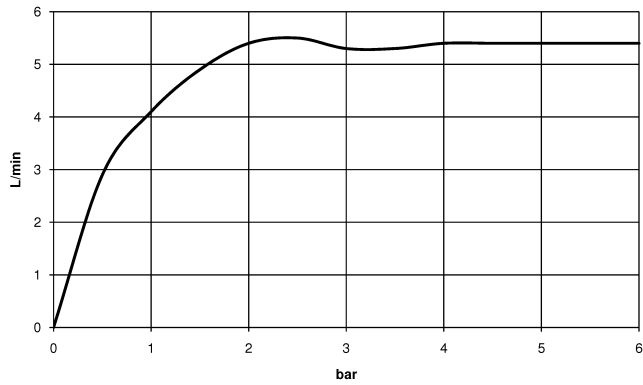


13 800 809

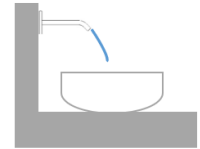
mm [inches]



Flow rate chart



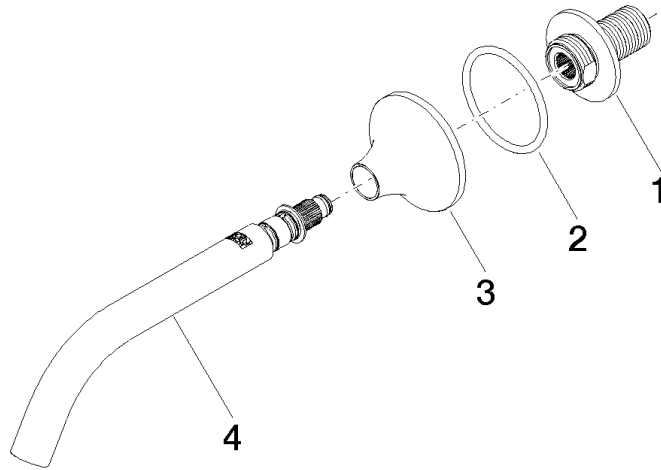
Trajectory diagram



Certificates

WRAS_2306002. LGA_29290.

13 800 809



Spare parts list

No.	Item Number	Name	Quantity used	Delivery time
1	09 24 03 269 90	nipple	1	2
2	09 14 10 084 90	seal	1	2
3	09 27 80 011-99	rosette	1	30
4	90 28 22 310 00-99	spout	1	30