








## CYO Wall-mounted basin spout without pop-up waste - Brushed Platinum

CYO

13 800 811



- 160mm projection
- fixed spout
- rectangular, air-enriched flow
- hole diameter 37 mm
- 1/2" connection
- max. flow 4.5 l/min
- lead-free
- This product can help a building meet the requirements of Green Building Rating Systems, e.g. LEED®, BREEAM®, DGNB

|   |   |               |
|---|---|---------------|
|  | Brushed Platinum                                  | 13 800 811-06 |
|  | Chrome  | 13 800 811-00 |
|  | Dark Chrome                                       | 13 800 811-19 |
|  | Brushed Durabronze<br>(23kt Gold)                 | 13 800 811-28 |
|  | Platinum / Brushed<br>Platinum                    | 13 800 811-36 |
|  | Durabronze /<br>Brushed Durabronze<br>(23kt Gold) | 13 800 811-38 |
|  | Brushed Dark<br>Platinum                          | 13 800 811-99 |

### Recommended miscellaneous



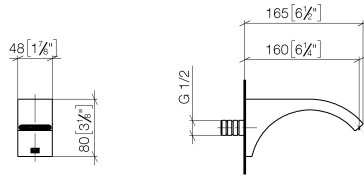
#### Concealed wall elbow -

35 085 970 90

- max. recess depth 163 mm
- min. recess depth 90 mm

13 800 811

mm [inches]



Flow rate chart



### Codes & Standards

|                |        |          |                |
|----------------|--------|----------|----------------|
| ASME A112.18.1 | cUPC   | DIN 4109 | EPA WaterSense |
| ISO 3822       | NSF372 | NSF61    | Ü-Zeichen      |

WaterSense





CYO Wall-mounted basin spout without pop-up waste - Brushed Platinum

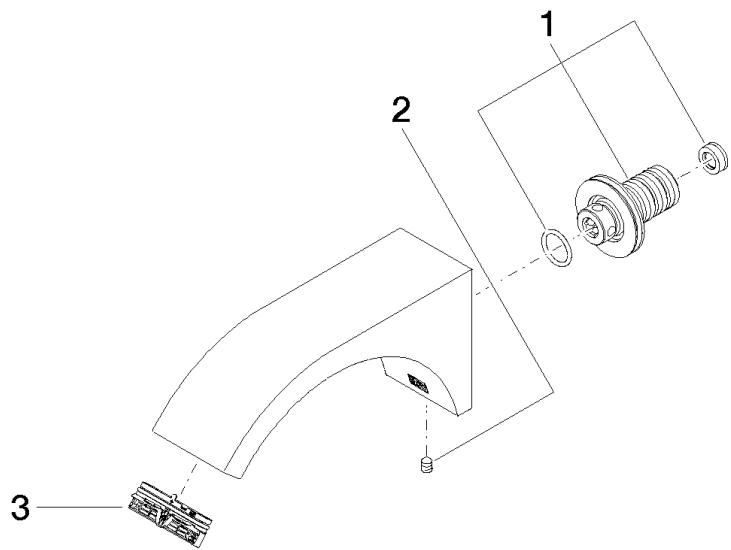
CYO

13 800 811

Certificates and sustainability

|        |           |            |            |         |
|--------|-----------|------------|------------|---------|
| LGA_38 | IAPMO_N-4 | IAPMO_4976 | IAPMO_8834 | IAPMO_6 |
|--------|-----------|------------|------------|---------|

13 800 811



Spare parts list

| No. | Item Number        | Name       | Quantity used | Delivery time |
|-----|--------------------|------------|---------------|---------------|
| 1   | 90 24 03 108 01 90 | nipple set | 1.00          | 2             |
| 3   | 90 29 03 121 00 90 | aerator    | 1.00          | 2             |
| 2   | 90 31 11 004 00 90 | pin        | 1.00          | 2             |